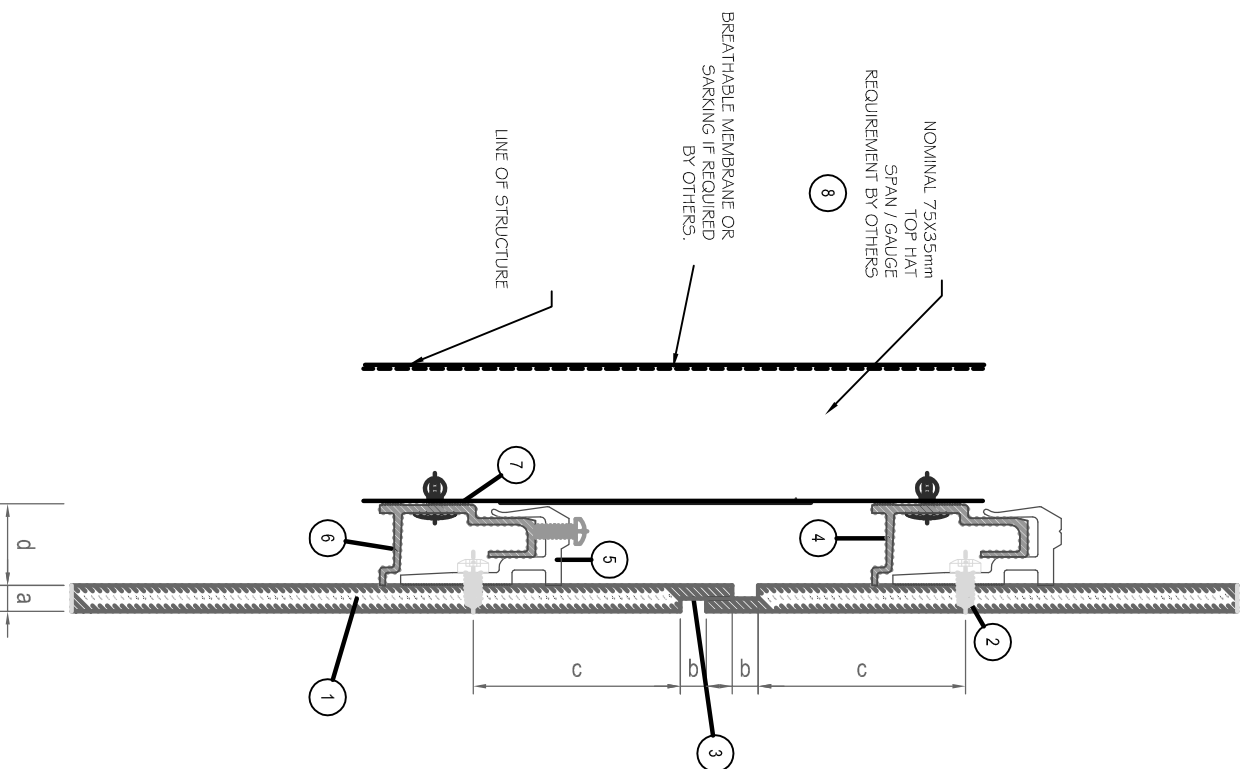


Horizontal section v1.1



1	Trespa® Meteoron® panel
2	EJOT PTs 60 threadcutting screw
3	Horizontal joint (various options available)
4	Hanging brack
5	Hanging bracket (adjustable)
6	Horizontal Rail
7	Aluminium rivet or screw
8	Top hat

a	Panel thickness (10 or 13 mm)
b	Joint width 10 mm Based on applicable building standards, regulations or certificates, wider joints may be permissible
c	Edge distance min. 65 mm to centre of first fixing and max. 10x panel thickness
d	Horizontal rail layer (30mm)
e	Ventilation 20 mm Recommended max. cavity depth (between rainscreen cladding and insulation): 50 mm

08-04-11	B	Geheel herzien	C.H.	
20-12-10	A	Herzien	JdJ	
Date	Revision			
	Building/ Department			
	Alg.			
	TRESPA			
	Drawn de Jonge	Paasjngen		
	Date Maart 2008	I.S.O.		
	Scale 1:2	Name		
		Façade cladding with Trespa		
		Meteoron TS200		
		Detail v1.1 – Horizontal joint		
Remarks		A3	TS200v1.1	B
	Number	Revision	Sheet	