



HVG
façades

**Non
Combustible
Collection**



HVG
façades



Contents



MondoClad

5

ZINTL

23

**SWISS
pearl**[®]

41



MondoClad®

NON-COMBUSTIBLE PRE-FINISHED ALUMINIUM PANELS

MondoClad® solid aluminium panels offer a single external cladding solution, providing specifiers flexibility in design with an extensive range of colours and panel sizes.

MondoClad® delivers outstanding fire performance being certified non-combustible to AS1530.1.



MondoClad.

ADDITIONAL INFORMATION

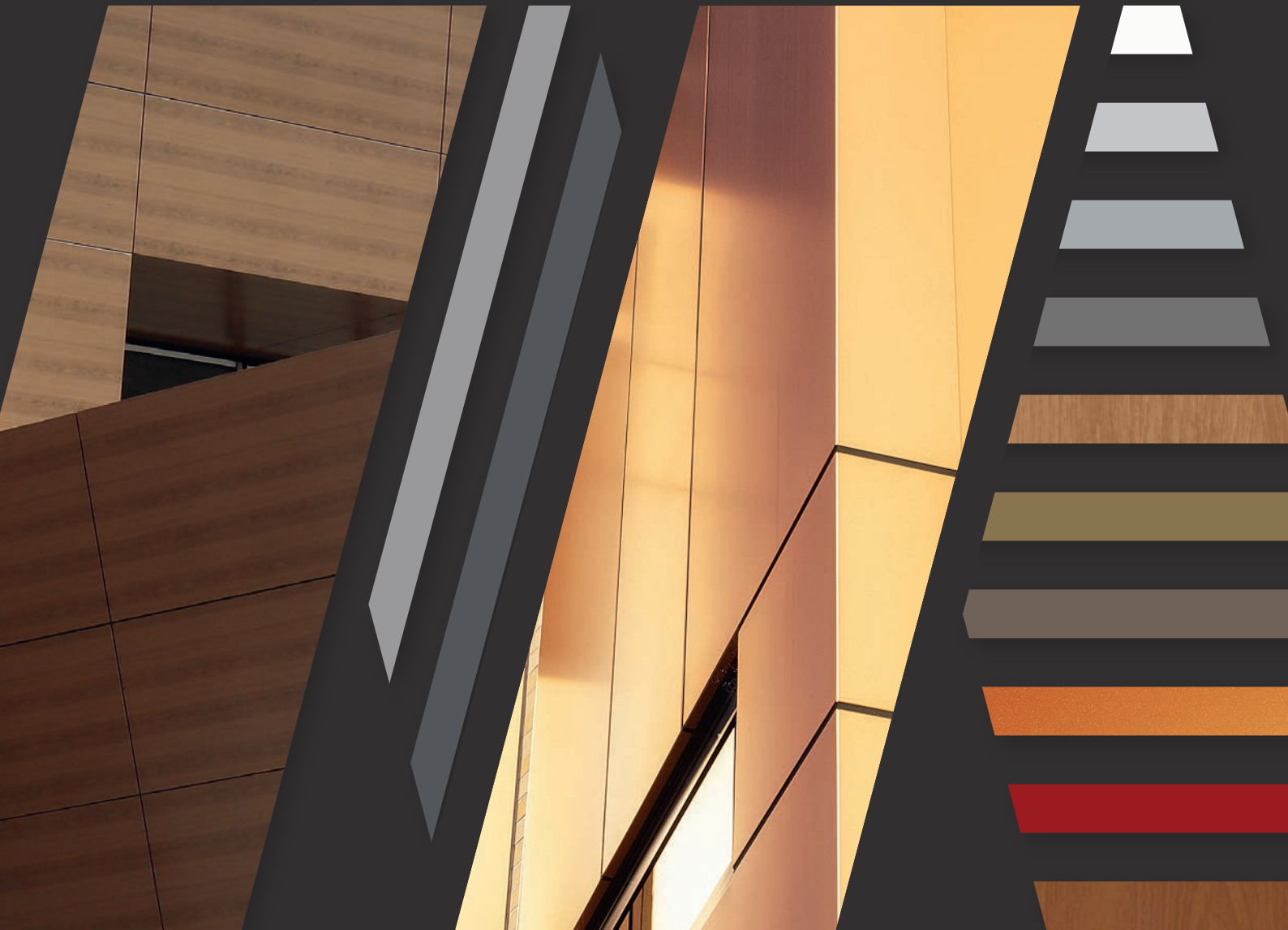
TECH AND INSTALLATION

<https://hvgfacades.com.au/mondo clad/mondo clad-techinstallation/>

VISUALISE YOUR NEXT PROJECT
ORDER SAMPLES HERE 



MondoClad



NON-COMBUSTIBLE PRE-FINISHED ALUMINIUM PANELS

VISUALISE YOUR NEXT PROJECT

ORDER SAMPLES HERE 

**SYDNEY WATER
BUILDING**

| NSW

7000m²

-

SILVER METALLIC
SILVER GREY
METALLIC



MondoClad

NON-COMBUSTIBLE ALUMINIUM PANELS

MondoClad® is a 100% adhesive free, 3mm solid aluminium panel that is coil coated with a PPG Duranar PVDF paint finish.

The superior PPG Duranar PVDF architectural paint finish ensures UV stability, colour retention and a product that will stand the test of time.

MondoClad® is CodeMark certified and has been tested to AS1530.3 achieving zero for ignitability and spread of flame.

MondoClad® is available in five capital cities in Australia for efficient service and delivery. Our warehouses across Australia stock a variety of colours and finishes to fulfil your needs.

Our solid aluminium panels provide architects, designers, developers, builders, and contractors a premium solid aluminium façade panel, that is non-combustible and can be safely specified for commercial, educational, aged care and residential projects without compromising design.

Utilising a highly corrosive resistant marine grade alloy, MondoClad® is ideal for installation in the harsh Australian environment.



MONDOCLAD® FEATURES

MondoClad® solid aluminium panels set a new standard in high-performance, quality facades.

With its exceptional fire performance, this is a non-combustible solution designed to last. Offered in an extensive range of colours, these pre-painted panels are coil coated and suited to a range of applications from high-rise and education to health care and residential developments. Exclusively distributed by HVG Facades, MondoClad® is now used in new constructions and the recladding of existing projects across Australia.

A product of enduring style

MondoClad®'s wide range of finishes and sizes means that even the most complex architectural designs can be achieved. Stocked locally in numerous colours and sizes, MondoClad® also offers custom colours and measurements on request.

MondoClad® is non-combustible, and can be easily fabricated into cassettes. This combination of low-maintenance, high level of safety and durability means that architects, designers, developers, builders and contractors can specify confidently without compromising design.

The superior PVDF architectural paint finish of MondoClad® also ensures UV stability and colour retention, so that architectural designs will stand the test of time.

A non-combustible solution that is designed to last

MondoClad® offers exceptional quality and fire performance. It is categorically non-combustible, in accordance with AS1530.1 standards, which sets it apart from many other market offerings.

Utilising a corrosion-resistant, marine-grade alloy, MondoClad® is ideal for use in harsh Australian conditions. The high-quality, coil coated paint finish provides modern colour options with durable UV resistance and gloss retention.

Sustainable alternative to timber

MondoClad® premium solid aluminium panels come in a variety of woodgrain colours – a sustainable alternative to timber products.

Complete your project in one of our premium timber finishes that are maintenance free in a wide range of colour choices. Choose your next woodgrain project in a Blonde Pine, Honey Oak, African Teak, Cherry or Blackbutt.





MondoClad

COLOUR SELECTION

MondoClad® is non-combustible, durable, and can be easily folded into cassettes, meaning that even the most ambitious creative vision can be realised.

Colour that lasts

The superior PVDF architectural coating of MondoClad® offers excellent UV stability and coil coated colour retention. MondoClad® offers a 20 year warranty, available on application and subject to approval.

Installation of metallic panels

To avoid possible differences in levels of light reflectivity, panels are best installed in the direction indicated on the protective peel-off foil.

Minor colour variations may occur between different production batches.

Confidence and certainty

Testing and installation of our MondoClad® solid aluminium panels was performed in order to satisfy stringent CodeMark requirements. Our premium solid aluminium cladding panels – MondoClad® will provide you with extra comfort and peace-of-mind knowing that it is CodeMark certified.

BERRIMAH FARM SCIENCE PRECINCT

| NT

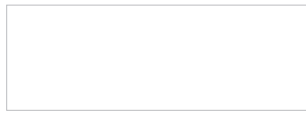
450m²

-

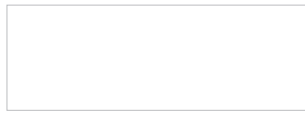
VARIOUS GREENS
(CUSTOM COLOURS)

SOLID

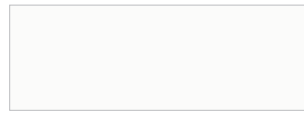
Bright, subtle, bold or neutral, the MondoClad® Solid colour range is offered in soft natural tones and vibrant hues that enhance any architectural design. Covered in a tough, PVDF coating, the panels retain both colour and gloss and do not chip or peel.



PURE WHITE



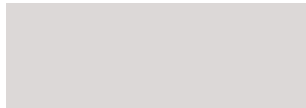
PURE WHITE HIGH GLOSS



WHITE



CREAM



COOL WHITE



BEIGE



SIGNAL GREY



MOUSE GREY



FROSTED DARK GREY



ANTHRACITE GREY



WALNUT BROWN



GREY BROWN



CHARCOAL



BLACK



YELLOW



ORANGE



RED



RUBY



ULTRAMARINE BLUE



STEEL BLUE

WOODGRAIN

MondoClad® Woodgrain range offers a high quality and sustainable alternative to timber products. Complete your projects in one of our premium timber finishes that are maintenance free.



BLONDE PINE



HONEY OAK



AFRICAN TEAK



CHERRY



BLACKBUTT

Colours displayed on this colour card are a guide only and have been matched as close as possible to production standards under daylight conditions. Due to the nature of the printing process some degree of colour and gloss level variation may occur. Where more than one finish is available product colour may vary. We recommend that you use production line prepared samples for final colour selection or approval.

METALLIC

The MondoClad® Metallic range makes a distinctive design statement on any skyline, creating a striking visual mix of gleaming facades and shadows.



SILVER WHITE



HALO



SILVER METALLIC



SILVER GREY METALLIC



GREY METALLIC



DARK GREY METALLIC



MEDIUM BRONZE METALLIC



CHAMPAGNE



SAGE



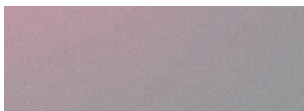
GOLD METALLIC



COPPER PENNY

SPECIALTY

Our MondoClad® Specialty colour range offers architects the ability to create a unique design that will capture the audience and leave a memorable impression.



EMERALD



CITRINE



BIARRITZ BLUE



SPARKLING BLACK

NATURAL

The unique MondoClad® Natural option offers a stunning finish – appearance of a natural texture up-close, and its smooth finish from afar.



NATURAL BRUSHED

CUSTOM

Custom colours are available upon request with a minimum order quantity.

VISUALISE
YOUR NEXT
PROJECT

ORDER
SAMPLES
HERE

Colours displayed on this colour card are a guide only and have been matched as close as possible to production standards under daylight conditions. Due to the nature of the printing process some degree of colour and gloss level variation may occur. Where more than one finish is available product colour may vary. We recommend that you use production line prepared samples for final colour selection or approval.

VISUALISE YOUR NEXT PROJECT

ORDER SAMPLES HERE 



MondoClad

BENEFITS

100% non-combustible to AS1530.1

This means that MondoClad® is NCC compliant, streamlining the building approvals process.

Compliant to FP1.4 for weatherproofing

MondoClad® has been tested to AS4284 and meets the criteria of the FP1.4 performance requirement for weatherproofing.

Custom sizes, colours and finishes

MondoClad® offers custom colours and sheet sizes, including oversize sheets, to ensure your design is achieved.

20-year warranty

MondoClad® offers high colour retention and will not oxidise over time. Warranty available on application and subject to approval. Contact our sales team for further information.

PVDF finish

Superior long lasting finish that is coil coated, with no cracking when fabricated.

High quality marine grade aluminium

MondoClad® is designed to be corrosion resistant, meaning it will not oxidise, making it an ideal choice for all locations.

Easy to fabricate

When folding, routing and cutting.

Stocked in Australia

As MondoClad® is stocked locally, there are reduced lead times for delivery.

Technical support

Our team of industry professionals are available to provide their expertise and technical knowledge to assist in your product-related enquiries.

Competitively priced

MondoClad® is an affordable high-quality option.

**TRICARE
STAFFORD LAKES**

| QLD

700m²

—
HONEY OAK

MONDOCLAD® TECHNICAL DATA SHEET

Properties	Units	Values
Alloy		5052
Standard thickness	mm	3
Painted weight	kg/m ²	8.31
Raw density	kg/m ³	2680
Indicative minimum radius	mm	4.5
Tensile strength	MPa	215-265
0.2% Proof stress	MPa	>160
Elongation	%	7
Linear thermal expansion		2.4mm/m at 100° temperature difference
Melting range	°c	607-650
Modulus of elasticity - Tension	GPa	69.3 @ 20°c
Modulus of elasticity - Torsion	GPa	25.9 @ 20°c
Modulus of elasticity - Compression	GPa	70.7 @ 20°c
Thermal conductivity	W/m.k	138 @ 25°c
Electrical resistivity	micro-ohm.m	70.7 @ 20°c
Electrical conductivity - Equal volume	MS/m	20 @ 20°c
Electrical conductivity - Equal weight	MS/m	67 @ 20°c
Sound adsorbtion factor	NCR	0.05
Sound reflection	%	95

FIRE PERFORMANCE

MondoClad® solid aluminium panels are non-combustible when tested to AS1530.1.

Test standard	Result		
AS1530.1	Non-combustible		
AS1530.3	Pass	Ignitability index	0
	Pass	Heat evolved	0
	Pass	Spread of flame	0
	Pass	Smoke developed	1
AS5637:1	Pass	Group	1



FABRICATION

MondoClad® sheets can be fabricated into panels using various techniques.

It is strongly recommended that you consult with machinery manufacturers and tool suppliers to secure the best fabrication result. We suggest that you conduct preliminary tests and trials prior to commencing the production of panels.



CNC Router

A V-groove with a flat base of 3mm is recommended to a maximum depth of 2.2mm. Spindle rotation speeds and feed rates are machine dependant and should be discussed with machine manufacturers. A lubricant mister is recommended when fabricating MondoClad®. For optimum fabrication results, we recommend consulting machine manufacturers and tooling supply companies.



Folding

After the V-groove has been formed, fold the return leg back in one movement. It is recommended that a portable folding tool be used for small panels and a folding machine/bed for larger format panels. The initial folded angle should slightly more than the final angle required.



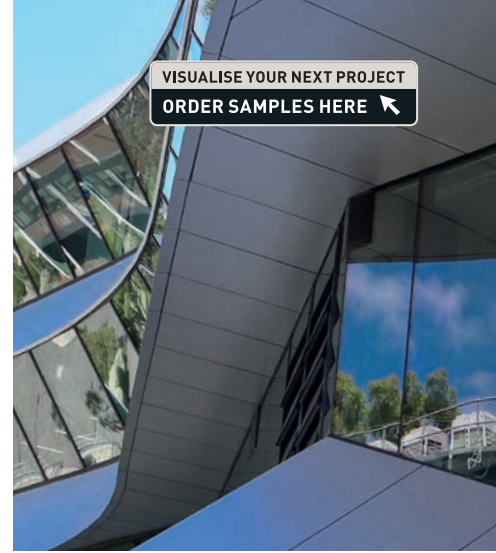
Bending

As an alternative to V-grooving and folding MondoClad® can be formed into cassettes using a press brake to create the 90° bend.



Circular Saw

For best results, a track guided circular saw is recommended. It is important to discuss blade selection with manufacturer. Hand folding is generally achievable without the need for bending equipment. A depth gauge roller suitable for 3mm thickness may be required.



VISUALISE YOUR NEXT PROJECT
ORDER SAMPLES HERE 



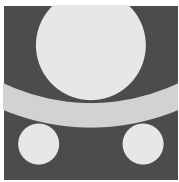
Vertical Panel Saw

This type of saw can cut and route MondoClad®. Please seek manufacturer's advice in the selection of an appropriate blade. Existing vertical saws can be retro fitted with a variable speed driver controller and lubricant misting equipment. When creating a V-groove for folding, the minimum thickness left in the bottom of the groove should be 0.7mm



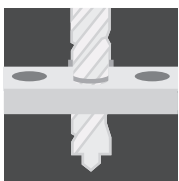
Shearing

MondoClad® can be guillotined to the required size. Ensure the cut material is captured to prevent damage.



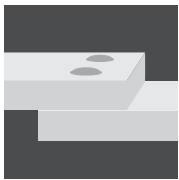
Roll Bending

To create curved surfaces, use a suitable bending machine. Safeguard the material by maintaining the protective film. Make certain the rollers are clean and dent-free. The minimum bending radius should be no more than 15 times the thickness.



Drilling

A high quality HSS centre point drill bit is suitable for drilling MondoClad®.



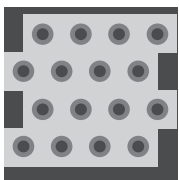
Fixing

You can rivet MondoClad® using blind and solid rivets. Always consider the effects of thermal expansion and potential building movement. Stainless steel screws should be used with all MondoClad® products. Always consider the effects of thermal expansion and the possibility of building movement.



Welding

The common methods for welding MondoClad® are TIG and MIG. It is recommended to consult with your local welding specialist for advice.

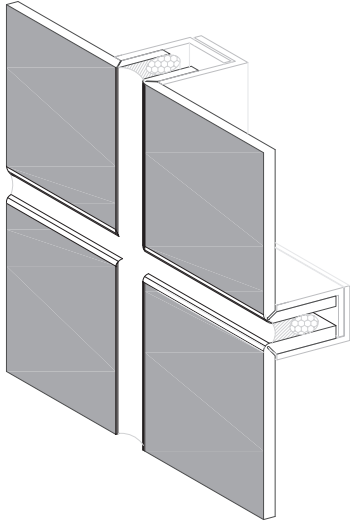


Perforating

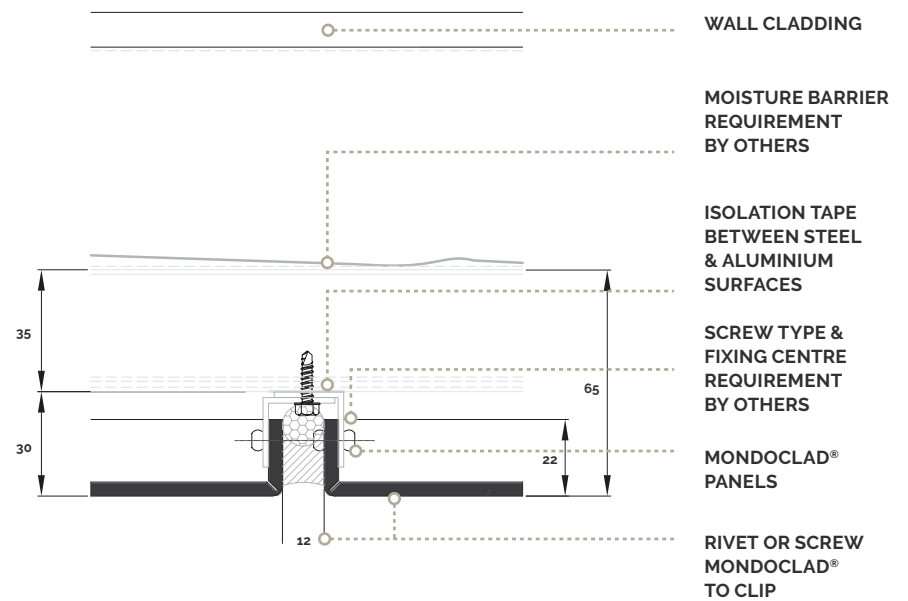
MondoClad® can be perforated by punching, drilling or milling. Contact HVG Facades to discuss the pattern and open area you are seeking to achieve.

FIXING DETAILS

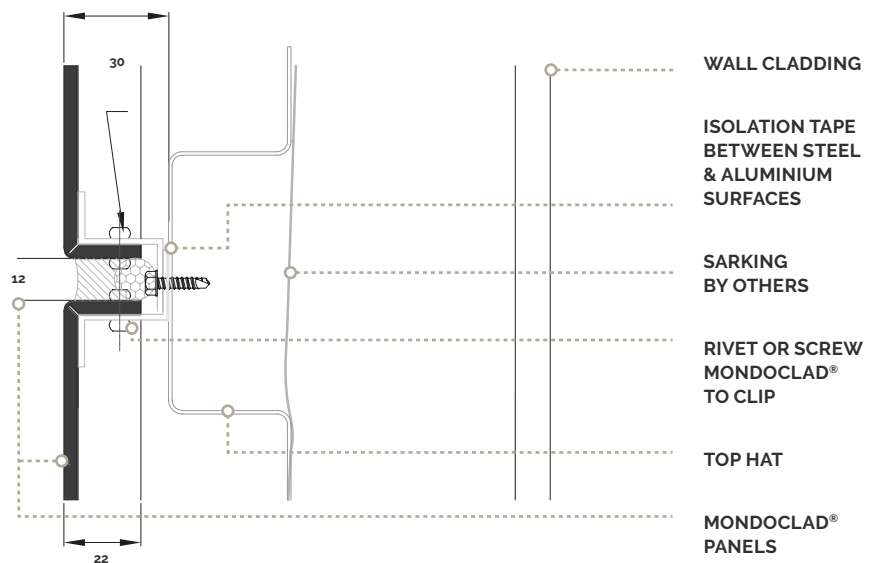
MondoClad® Fixed Cassette System



Vertical Joint-Route



Horizontal Joint Z Angle-Route



CLEANING INFORMATION

To maintain the appearance of the MondoClad® panels we strongly recommend regular cleaning with appropriate mild detergents ensuring that the detergent is thoroughly rinsed off the facade.

Never use cleaning products that are highly alkaline or acidic and avoid abrasive materials and paint dissolving solvents. Facades that are located near a marine or industrial environment may need more frequent cleaning periods.

The surface should be cleaned either manually using a soft brush or by means of a high-pressure cleaner (max. 50 bar) with clean water.

If necessary, a mild cleaning agent (pH6-7) may

be added, up to a maximum of 10%. Cleaning should take place from top to bottom and should be continuously rinsed with clean water to remove any cleaning agent residue. Generally, we recommend trying out the cleaning agent on an obtrusive part of the building to check whether the surface appearance is affected.

Do not clean surfaces in direct sunlight or if the temperature is above 40°C. The quick drying may cause marks or stains.



SUSTAINABILITY

At HVG Facades our commitment to sustainability is one of our core business objectives – we aim to minimise any negative impact we have on the environment.

When it comes to choosing partners, we seek out only ethical manufacturers who have proven outstanding environmental credentials, achieved by adhering to strict processes and procedures. The materials we offer provide long life performance, are low maintenance and extremely durable, therefore reducing the overall environmental footprint of the building.

MondoClad® is an excellent choice to enhance the sustainability of buildings due to its

exceptional corrosion resistance and recyclability. MondoClad® solid aluminium panels are 100% recyclable offering an eco-friendly solution. Up to 95% less energy is required in the recycling of aluminium compared to other primary metals leading a reduction in emissions.

Together with our business partners, HVG Facades continuously looks for opportunities to support and promote long term sustainability initiatives that have a positive impact on the environment as a whole.



Ethical. Sustainable. Transparent.

SUSTAINABLE MANAGEMENT AND RECYCLING PROGRAM TARGETING ZERO CARBON FOOTPRINT

HVG Facades is proud to be a leading supplier of recladding materials to the Australian construction industry.

In response to the mandated removal of all non-compliant polyethylene (PE) cladding, it is estimated that the amount of waste generated by the removal of this cladding will exceed 20,000 tonnes.

HVG Facades is committed to reducing the impact this waste will have on our environment and as a result we have partnered with approved recycling experts to develop EnviroSmart®.

EnviroSmart® is a program that seeks to address a significant need in the construction industry, in a sustainable manner that contributes to the future health of our planet. This program is an end-to-end solution that provides a cost effective and safe way to remove and recycle aluminium composite panels. As a completely transparent solution, EnviroSmart® can provide certified documentation of the entire process.

**ST JOHN OF GOD
HOSPITAL**

| VIC

1000m²

-

NATURAL BRUSHED

MAKING RECLADDING EVEN GREENER

Now, in addition to recycling and reusing non-compliant aluminium cladding, we've gone one significant step further and teamed up with Carbon Positive Australia to plant trees and help restore the Australian landscape.

For every qualified project, where non-compliant cladding is removed and recycled using the EnviroSmart® program, HVG Facades will donate and plant trees on your behalf with Carbon Positive Australia.



A registered Australian charity working to combat climate change and restore habitats, Carbon Positive Australia plants native trees and shrubs on unused and degraded land to restore the natural habitat. Over their 20-year history, they've restored almost 5,000 hectares of land across Australia.

ZINTL®

PREMIUM INTERLOCKING ALUMINIUM CLADDING SYSTEM

The ZINTL® premium solid aluminium interlocking cladding system delivers a range of powder-coated colours across a range of solid, anodised and wood grain finishes.

ZINTL® is certified non-combustible to AS1530.1 – offering number of profiles with over 150 colours to select from. The colour matched ancillaries provide consistency and the interlocking joints assist in easy installation both vertically and horizontally.



ZINTL

ADDITIONAL INFORMATION

COLOUR CARD BROCHURE

https://hvgfacades.com.au/wp-content/uploads/2021/04/Zintl-Colour-Card-Brochure_V3.0.pdf

TECH AND INSTALLATION

<https://hvgfacades.com.au/zintl/zintl-techinstallation/>

VISUALISE YOUR NEXT PROJECT
ORDER SAMPLES HERE 

ZINTL®



PREMIUM INTERLOCKING
ALUMINIUM CLADDING SYSTEM

ZINTL® BENEFITS

Customisable

With its five unique profile designs and broad range of finishes and colours, ZINTL® enhances any project.

Non-combustible to AS1530.1 and AS1530.3

ZINTL® is NCC compliant, a rating that helps streamline the building approvals process.

Weatherproof AS4284

Compliant to FP1.4 for weatherproofing ZINTL® has been tested to AS4284 and meets the criteria of the FP1.4 performance requirement for weatherproofing.

Australian Made and Owned®

ZINTL® premium interlocking weatherboard is Australian Made and Owned®.

Easy to install

ZINTL®'s interlocking system is easy to use, which means faster installation, improved site costs and superb alignment.

Powder coated finish

ZINTL® offers high colour retention and a superior long-lasting finish through trusted Interpon and Dulux ranges.

High quality marine grade aluminium

ZINTL® is designed to be corrosion resistant, ensuring it will not oxidise over time and making it an ideal choice for all locations.

Expert advice

ZINTL® offers a team of experts with strong industry, design and technical knowledge available to assist with projects.

Warranty*

ZINTL® surface finish warranty is up to 30 years, based on powder coat range. Project warranties available with pre-approval. Please refer to the ZINTL® 'Care and Maintenance' brochure for further information.



DESIGN PERFORMANCE

ZINTL® aluminium cladding system is a timelessly elegant and enduring material that offers a world of design possibilities. This high-performance cladding is available in a range of interlocking weatherboard profiles to suit any project.

ZINTL® provides specifiers with facade profiles that are versatile and non-combustible, certified to AS1530.1 and AS1530.3. Combining sophisticated style, extraordinary fire performance and efficient installation, this cladding system is ideal for residential, commercial, industrial, education, sporting and health care projects. Designed for quick and cost effective installation, ZINTL® requires minimal ongoing maintenance and can be customised to suit each project.

ZINTL® aluminium cladding is offered in a wide range of Interpon and Dulux powder coated finishes as well as a selection of anodised and wood grain architectural finishes, providing a beautifully refined aesthetic. With its mix of natural, bold and subtle hues, ZINTL® is perfect for any budget or environment. Its durability makes it particularly well suited for coastal properties and high traffic areas.

ZINTL® TECHNICAL DATA SHEET

Properties	Units	Values
Alloy		6063
Temper		T5
Standard thickness	mm	1.4-2.2
Painted weight	kg/m ²	0.642kg/m to 1.575kg/m
Raw density	kg/m ³	2700
Young's modulus (E)	GPa	68.3
Tensile strength (25°C)	MPa	220
Yield strength (25°C)	MPa	180
Shear strength	MPa	11
Fatigue strength	MPa	117
Elastic modulus	MPa	69
0.2% proof stress	MPa	>170
Elongation	%	12
Linear thermal expansion		2.4mm/m at 100° temperature difference
Melting range	°C	630-660
Electrical conductivity - Equal volume	MS/m	32
Electrical conductivity - Equal mass	MS/m	105
Thermal conductivity	W/m.K	201-218
Sound adsorption factor	NCR	0.05
Sound reflection	%	95

ZINTL® CERTIFICATIONS

ZINTL® premium interlocking aluminium cladding system is certified non-combustible when tested to AS1530.1. and AS1530.3 and meets FP1.4 performance requirement criteria for weatherproofing.

Properties	Result		
AS1530.1	Non-combustible		
AS1530.3	Pass	Ignitability index	0
	Pass	Heat evolved	0
	Pass	Spread of flame	0
	Pass	Smoke developed	3
As4284	Meets FP1.4 criteria		

ZINTL® SYSTEMS AND PROFILES

Linea 190



Linea Series 190 / 300

- 190mm and 300mm finished face
- Horizontal and vertical install
- Sleek and contemporary flat board appearance
- 3.5m, 5.0m and 6.5m lengths

Shiplap 150



Shiplap Series 150 / 200

- 150mm and 200mm finished face
- Horizontal and vertical install
- Contemporary, traditional weatherboard appearance
- 3.5m, 5.0m and 6.5m lengths

Standing Seam 190



Standing Seam Series 190 / 300

- 190mm and 300mm finished face
- Vertical install only
- A vertical interlocking profile with single standing seam
- 3.5m, 5.0m and 6.5m lengths

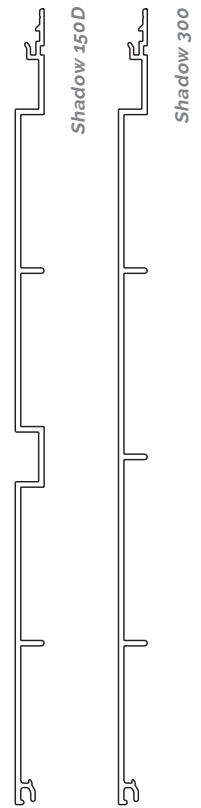




Shadow Series
150 / 150D / 200 /
250 / 300

- 150mm, 200mm, 250mm and 300mm finished face
- Horizontal and vertical install
- A flat continuous board with negative detail
- 3.5m, 5.0m and 6.5m lengths

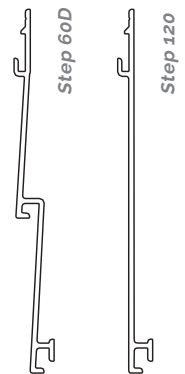
D - denotes a double pattern



Step Series
60D / 120 / 150

- 120mm and 150mm finished face
- Horizontal install only
- Stepped weatherboard appearance
- 3.5m, 5.0m and 6.5m lengths

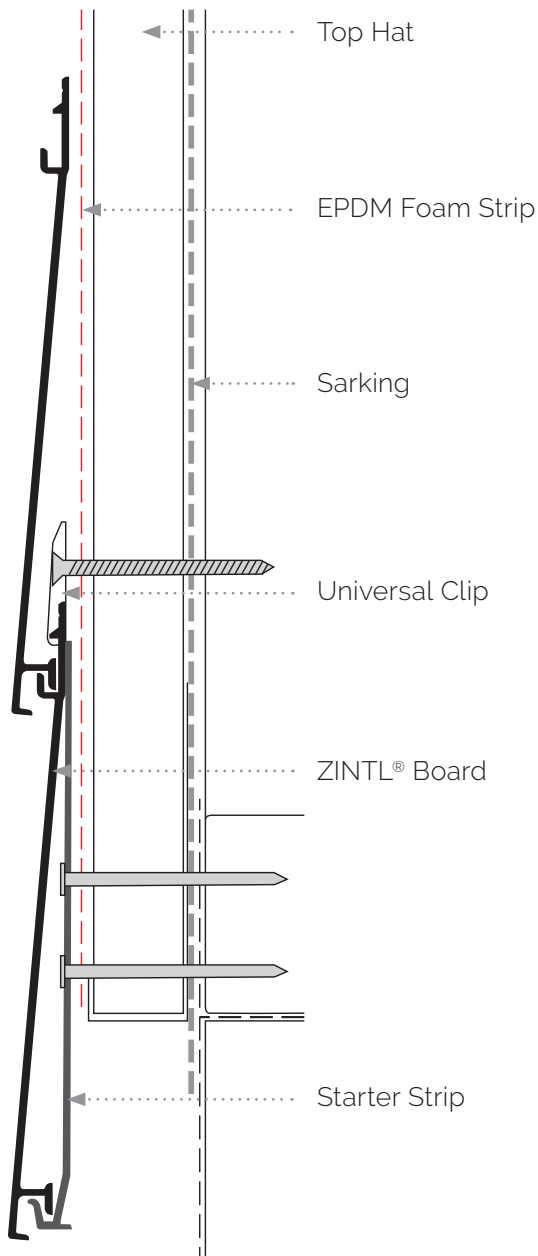
D - denotes a double pattern



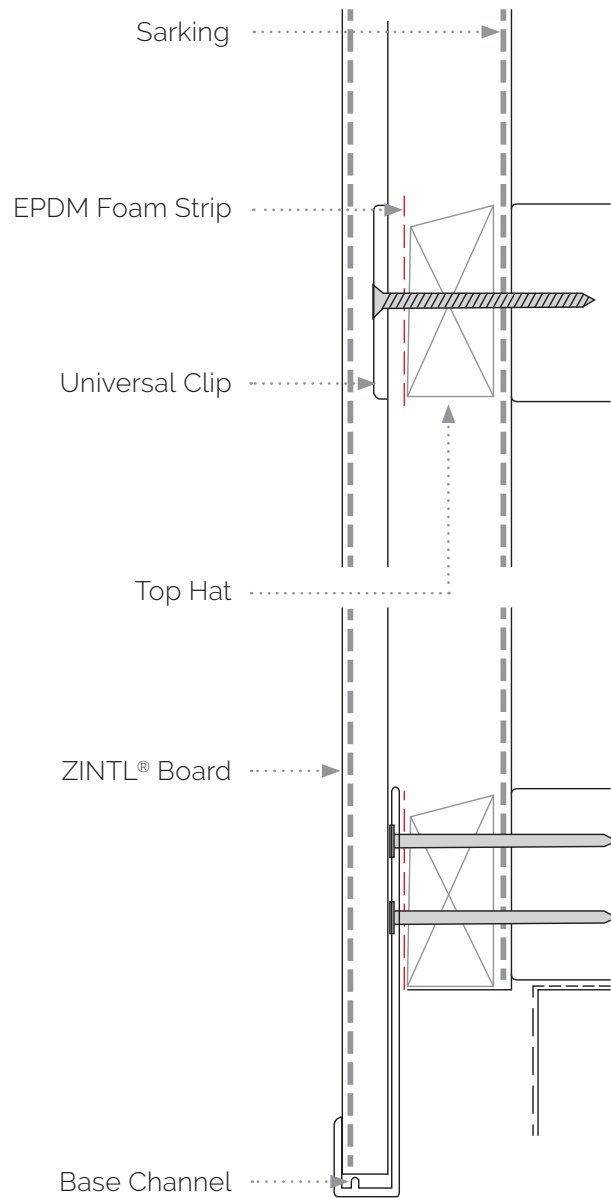
FIXING DETAILS



Horizontal Board



Vertical Board



ezy HD²

Australian Made and Owned®, ZINTL®, Premium Interlocking Cladding System uses ezy HD² technology that will provide architects with a realistic look and feel and a superior exterior performance.

ezy HD² wood effect coating provides maximum definition and durability using the advance powder-on-powder coating system. This system is unique to the Australian market and produces a finish with a realistic woodgrain look and feel.

ezy HD² finishing was created from technology developed and patented in Italy for the decoration and protection of architectural aluminium with a natural wood effect. ezy HD² is the first system to obtain a realistic wood effect coating using a powder-on-powder process that ensures high definition and a highly durable finish for your

product. ezy HD² is the only wood effect coating in Australia that can offer a 15-year colour and 25-year film integrity warranty for both the base coat and the grain coat.

Powder coatings that pass AAMA2604 standards are highly recommended for installations in coastal areas, in environments with high humidity, pollution and salinity and in all areas characterised by exposure with annual average solar radiation from moderate to extreme, ideal for the Australian landscape.

The powder-on-powder process is more durable and less subject to differential fading in comparison to the wood effect products obtained by the sublimation wood effect finish. This is because the grain is the same product and same quality as the base coat ensuring that they both weather at the same time.



CLEANING INFORMATION

To ensure ZINTL® is maintained to the highest standard, regular cleaning is recommended.

Further information can be found in the ZINTL® 'Care and Maintenance' brochure.

A SUSTAINABLE CHOICE

ZINTL® aluminium cladding is an excellent choice to enhance the sustainability of buildings due to its exceptional corrosion resistance and recyclability.

Our ZINTL® solid aluminium boards are 100% recyclable, offering an eco-friendly solution. Up to 95% less energy is required in the recycling of aluminium in comparison to other primary metals, ensuring a reduction in emissions.

ZINTL.

ADDITIONAL INFORMATION

COLOUR CARD BROCHURE

https://hvgfacades.com.au/wp-content/uploads/2021/04/Zintl-Colour-Card-Brochure_V3.0.pdf

TECH AND INSTALLATION

<https://hvgfacades.com.au/zintl/zintl-techinstallation/>

VISUALISE YOUR NEXT PROJECT
ORDER SAMPLES HERE 

ZINTL®



PREMIUM SNAP-IN
ALUMINIUM BATTEN SYSTEM

ZINTL® BATTEN SYSTEM



Applications

ZINTL® Batten is a versatile architectural facade system suitable for use in residential, commercial, industrial, education, sporting and health care projects.

Whether horizontally or vertically aligned, with its clean lines and contemporary look, ZINTL® Batten will bring a sophisticated and aesthetic impression to any architectural environment.

ZINTL® Batten comes in two different widths, 25mm and 50mm, as well as a selection of various height options to choose from.

ZINTL® Batten uses a simple 'snap in' locking system to aid the installation. Simply mount the batten inner then firmly snap on the batten outer until a 'click' is heard.

Materials

ZINTL® Batten architectural battens are extruded from 6063-T6 premium grade aluminium alloy. High corrosion resistance and weatherability, perfect for commercial applications. Standard Stock Length: 6.5 metres

Creativity

With a wide range of woodgrain and powder coating finishes and varying size options available, ZINTL® Batten allows specifiers to realise their creative vision and bring their designs to life.

In the past such freedom could only be achieved with apprehension, resulting in inconsistency due to the nature of custom manufacturing.

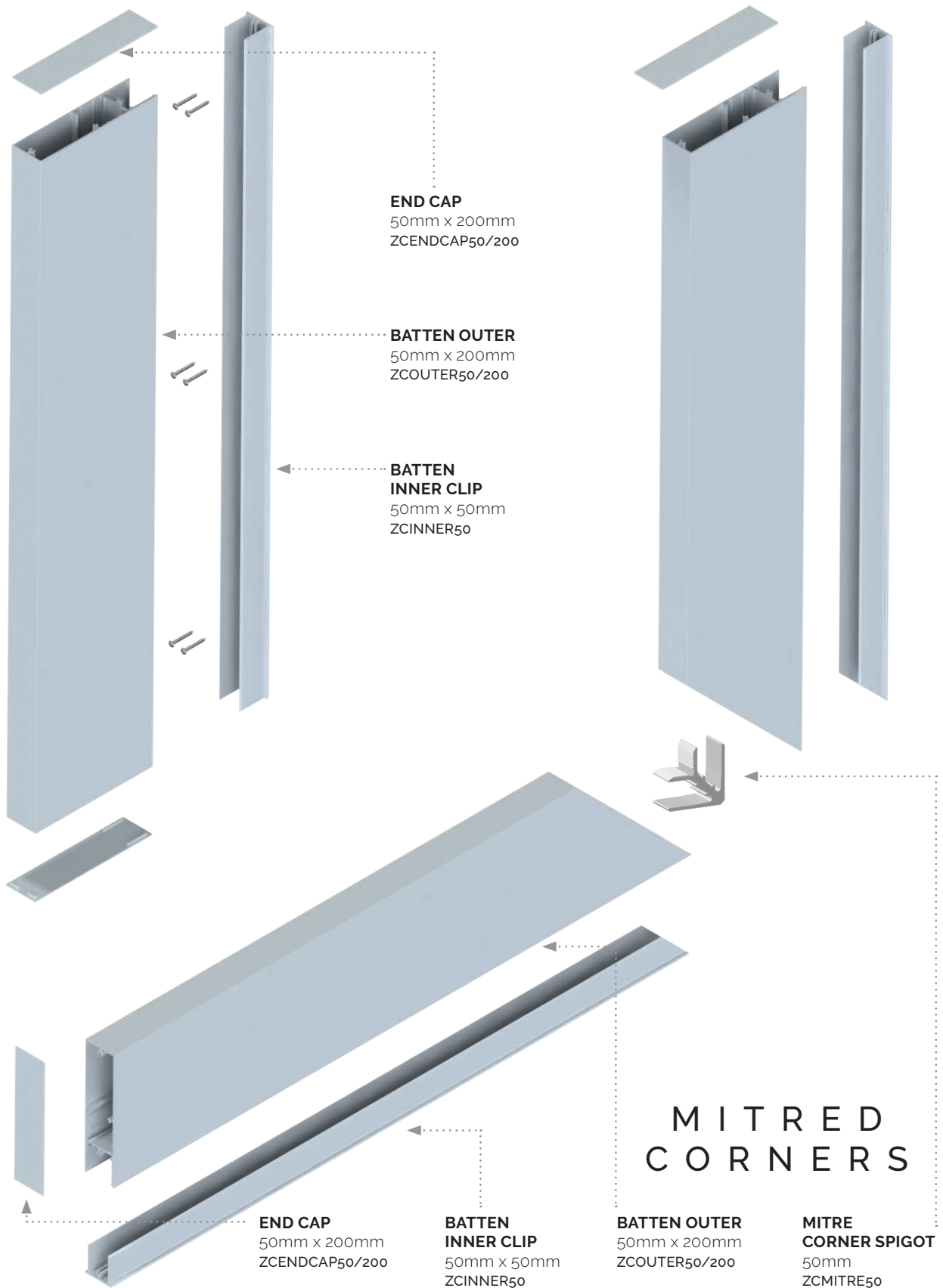
With ZINTL® Batten's standard sizes and modularity, it allows HVG Facades to supply an accurate and consistent architectural batten system.

Installation

Installers must consult with their Architect, Engineer or Building Designer to ensure that their specific installation will be suitable and compliant with all local building regulations and requirements.

This is essential due to the various installation methods by which the ZINTL® Batten Systems can be applied, and the various requirements for each building type and location. HVG Facades will not be responsible nor liable for any design or installation that does not comply with all local building code regulations or specified engineering requirements.

ZINTL® BATTEN ASSEMBLY

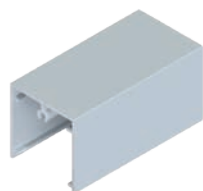


*50mm x 200mm Batten System displayed for illustrative purposes - batten outer illustrated is indicative option only.

ZINTL® BATTEN 50mm EXTRUSION PROFILES

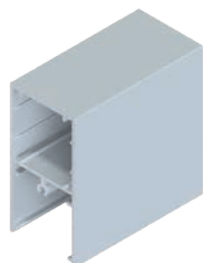
	Size			
	50mm x 50mm	50mm x 100mm	50mm x 150mm	50mm x 200mm
Batten Outer	ZCOUTER50/50	ZCOUTER50/100	ZCOUTER50/150	ZCOUTER50/200
Batten End Cap	ZCENDCAP50/50	ZCENDCAP50/100	ZCENDCAP50/150	ZCENDCAP50/200
Batten Inner Clip	ZCINNER50			
	CAP SCREWS – 8g x 20mm CSK ST/ST SelfTapping Screws			
Batten Mitre Corner Spigot	ZCMITRE50			

BATTEN OUTER



BATTEN OUTER
50mm x 50mm
ZCOUTER50/50

END CAP
50mm x 50mm
ZCENDCAP50/50



BATTEN OUTER
50mm x 100mm
ZCOUTER50/100

END CAP
50mm x 100mm
ZCENDCAP50/100



BATTEN OUTER
50mm x 150mm
ZCOUTER50/150

END CAP
50mm x 150mm
ZCENDCAP50/150



BATTEN OUTER
50mm x 200mm
ZCOUTER50/200

END CAP
50mm x 200mm
ZCENDCAP50/200

INNER CLIP MITRE CORNER



BATTEN INNER CLIP
50mm x 50mm
ZCINNER50



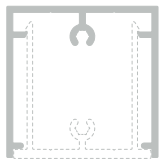
MITRE CORNER SPIGOT
50mm
ZCMITRE50



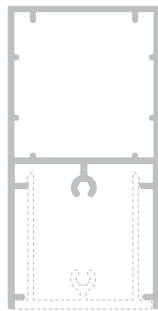


BATTEN OUTER & INNER CLIP ASSEMBLY

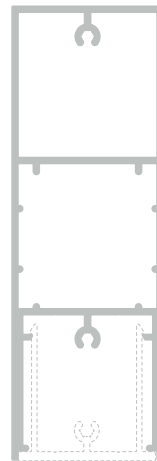
ZINTL® Batten uses a simple 'snap in' locking system to aid in installation. Simply mount the batten inner then snap on the batten outer until a 'click' is heard



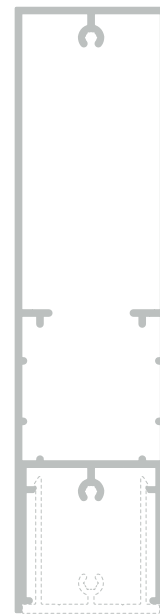
BATTEN OUTER
50mm x 50mm
ZCOUTER50/50



BATTEN OUTER
50mm x 100mm
ZCOUTER50/100



BATTEN OUTER
50mm x 150mm
ZCOUTER50/150



BATTEN OUTER
50mm x 200mm
ZCOUTER50/200



BATTEN INNER CLIP
50mm x 50mm
ZCINNER50

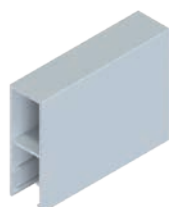
ZINTL® BATTEN 25mm EXTRUSION PROFILES

	Size			
	25mm x 50mm	25mm x 75mm	25mm x 100mm	25mm x 150mm
Batten Outer	ZCOUTER25/50	ZCOUTER25/75	ZCOUTER25/100	ZCOUTER25/150
Batten End Cap	ZCENDCAP25/50	ZCENDCAP25/75	ZCENDCAP25/100	ZCENDCAP25/150
Batten Inner Clip	ZCINNER25			
	CAP SCREWS – 8g x 20mm CSK ST/ST SelfTapping Screws			

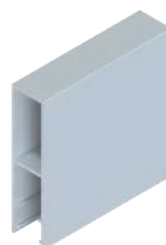
BATTEN OUTER



BATTEN OUTER
25mm x 50mm
ZCOUTER25/50
END CAP
25mm x 50mm
ZCENDCAP25/50



BATTEN OUTER
25mm x 75mm
ZCOUTER25/75
END CAP
25mm x 75mm
ZCENDCAP25/75

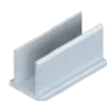


BATTEN OUTER
25mm x 100mm
ZCOUTER25/100
END CAP
25mm x 100mm
ZCENDCAP25/100



BATTEN OUTER
25mm x 150mm
ZCOUTER25/150
END CAP
25mm x 150mm
ZCENDCAP25/150

INNER CLIP

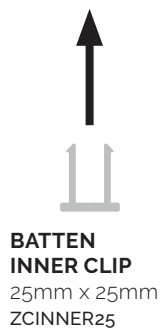
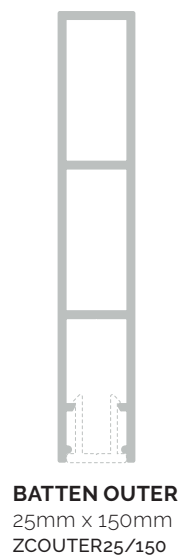
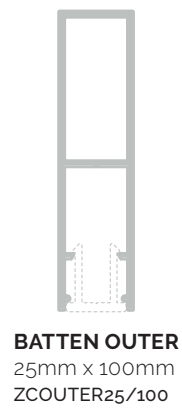
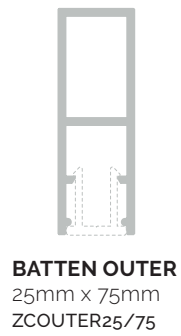
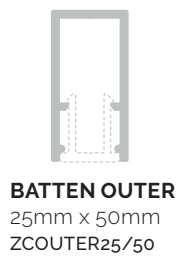


BATTEN INNER CLIP
25mm x 25mm
ZCINNER25



BATTEN OUTER & INNER CLIP ASSEMBLY

ZINTL® Batten uses a simple 'snap in' locking system to aid in installation. Simply mount the batten inner then snap on the batten outer until a 'click' is heard





SWISS pearl®

STYLE. STRUCTURE. SUBSTANCE.

With a natural cement look, a diversity of colours and endless variations in texture, Swisspearl® high-density fibre cement panels offer an NCC compliant non-combustible solution like no other in its category.

Hard-wearing and impact resistant, Swisspearl® allows you to enjoy European design for the Australian landscape.



ADDITIONAL INFORMATION

COLOUR CARD BROCHURE

https://hvgfacades.com.au/wp-content/uploads/2021/03/3.Swisspearl_Ranges-and-Colours-2020.pdf

TECH AND INSTALLATION

<https://hvgfacades.com.au/swisspearl/swisspearl-techinstallation/>

VISUALISE YOUR NEXT PROJECT
ORDER SAMPLES HERE 

SWISS
pearl®



European design.
For the Australian landscape.

Style. Structure. Substance.

About Swisspearl

Swisspearl® sets an unparalleled standard in high-density fibre cement cladding. Available in an extensive range of colours and finishes for architectural flexibility and designed to provide maximum fire resistance for peace of mind, it's the ideal option when choosing fibre cement panels for your next project.

Swisspearl® allows you to enjoy European design for the Australian landscape.

With a range of colours, textures and finishes that's unsurpassed, as well as the versatility of custom fabrication to suit your individual needs, Swisspearl® offers endless design possibilities.

Non-combustible, hard-wearing and impact resistant, Swisspearl® high-density fibre cement panels have been designed to withstand harsh Australian conditions.

Manufactured in Switzerland with a high level of environmental awareness and installed using natural and energy efficient methods, Swisspearl® improves building exteriors both aesthetically and ecologically.

Swisspearl® is ideal for new projects as well as recladding applications, making it perfect for internal and external cladding of aged care, healthcare, government, education, commercial and residential projects.

When it comes to style, structure and substance, no one comes close to Swisspearl®.

Swisspearl features and benefits

Extensive colours and finishes

With more than 90 stunning, coloured through standard finishes divided amongst seven distinct ranges (many with their own unique finishes) Swisspearl® even offers custom colour options. Choose from multiple sheet sizes and the flexibility to cut to your individual specifications.

Classified non-combustible

A premium, non-combustible and NCC compliant product, allows architects and builders to feel confident they've chosen the right product for the project.

Highly durable and impact resistant

Tested against extreme heat, freezing temperatures and large hail impact. They are designed to resist rot. The hard-wearing, durable nature of Swisspearl® provides proven performance in all weather conditions.

Low maintenance and UV resistant

With a premium surface finish that's low-maintenance and highly resistant to harmful UV rays, designed to withstand Australia's harsh climate, even in the most remote areas.

Ideal for recladding

It's the ideal choice for rectification and recladding works where improved fire resistant cladding products are required.

Local sales and technical support

Swisspearl® is stocked locally, so it's easily accessible. We have technical expertise and sales support in each state able to assist with your specifications and order enquiries.

Sustainable and environmentally friendly

Manufactured with a high level of environmental awareness, are made from 95% cement, pulverised limestone, water and air.

Swisspearl technical data sheet

Properties	Units	Test method	Results
Physical properties			
Density	g/cm ³	EN 12467	>1.75
Weight	kg/m ²		15.7 for 8 mm
Bending strength (equilibrium)	MPa	EN 12467	>22
Bending strength (wet condition)	Class 4/Cat.A	EN 12467	passed
Modulus of elasticity (E-Modul)	MPa	EN 12467	ca. 15000
Moisture movement	%	EN 12467	ca. 0.12
Thermal expansion coefficient	mm/mK	ASTM E 228-95	0.01
Thermal conductivity	W/mK	EMPA	ca. 0.56
Dimensional tolerances			
Thickness	mm	EN 12467	±10%
Length and width	Level 1	EN 12467	passed
Straightness of edges	Level 1	EN 12467	passed
Squareness of edges	Level 1	EN 12467	passed
Durability			
Water impermeability	Category A	EN 12467, ASTM C 1185	passed
Freeze-thaw	Category A	EN 12467	passed (RL ca. 1.0)
Soak / dry	Category A	EN 12467	passed (RL ca. 1.0)
Heat-rain	Category A	EN 12467, ASTM C 1185	passed
Warm water	Category A	EN 12467	passed (RL ca. 1.0)
Fire			
Surface Burning Characteristics EN			
Fuel contributed	A2	EN 13501-1	passed
Smoke Development index (SDI)	s1	EN 13501-1	passed
Flames droplet index	d0	EN 13501-1	passed
Fire performance	Suitable where non-combustible materials are used in accordance with local building regulations		

Fire performance

Swisspearl® high-density fibre cement panels help to provide a definitive solution to fire compliance. Classified as non-combustible under C1.9(e)(iv) of the National Construction Code (NCC) deemed-to-satisfy provisions and satisfying the requirements of AS2908.2 (classification of cellulose cement products-flat sheets).

With its fire-resistant properties, Swisspearl® offers an efficient pathway to compliance with the NCC.

Swisspearl Rear Ventilated Facades



Rear Ventilated Facades have been used extensively throughout the world over many years to provide a natural, energy efficient method for cladding commercial and residential buildings.

A multi-layer construction, the system consists of a rainscreen cladding on the outer layer in combination with a frame, weather-resistant membrane, insulation, sub frame and a ventilated cavity.

A modern method of facade construction, rear ventilated facades are gaining momentum in Australia as developers, architects and builders understand the principles and advantages of rainscreen systems.

A differential between the temperature on the face of the cladding panel and the air cavity temperature creates a variation in air density, resulting in a "chimney effect" that produces upward airflow within the cavity.

As a safeguard, a weather-resistant membrane is attached to the building frame, providing an envelope. Under extreme weather conditions a minimal amount of water may pass through the joints.

Due to the ventilated nature of the system, this moisture will run down the back of the panel and drain out the bottom of the facade.

Benefits of a ventilated facade / rainscreen cladding:

Rear Ventilated Facades with their inherent airflow provide several distinct advantages over other facade systems;

Energy savings

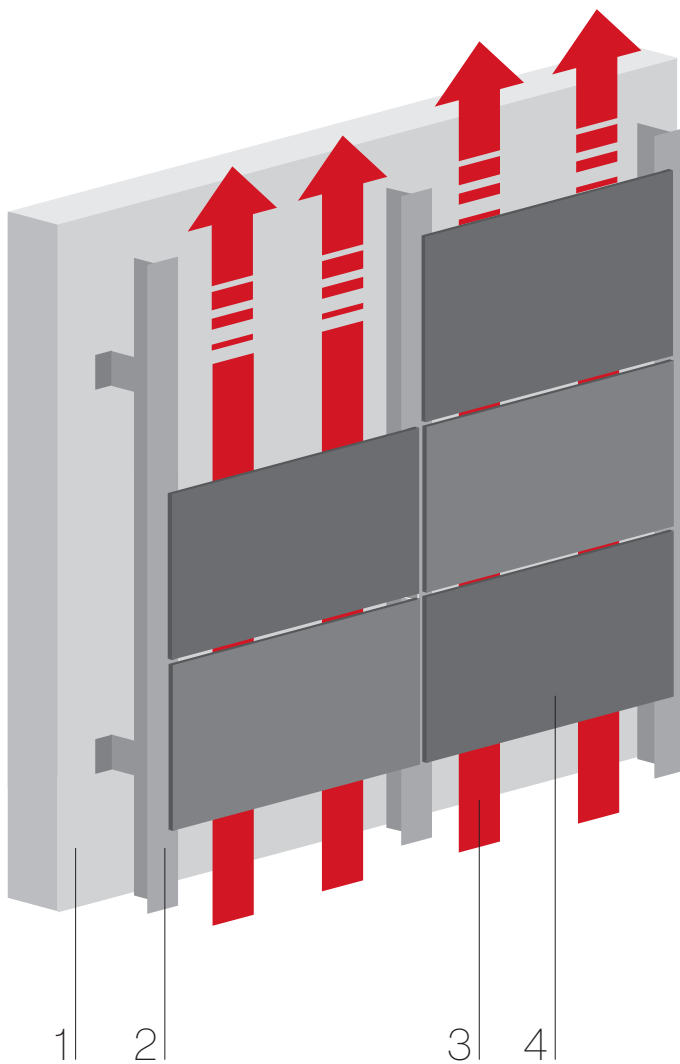
- Up to 30%
- Reduction in CO²
- Greater internal comfort

Hot climates

- Natural air-conditioning
- Heat shield
- A constant temperature

Cold climates

- Reduces thermal losses
- Enhances thermal bridging



The typical rainscreen system is based on natural rear ventilation. It is most reliable, sustainable and provides maximum longevity to exterior cladding.

Ventilated facade systems consist of four main components:

- 1** Support structure
- 2** Sub frame
- 3** Ventilated cavity
- 4** Cladding

1
Support structure

The exterior wall of a building is mainly made of concrete, CMU blocks, brickwork, steel or timber frame with studs and planked by gypsum boards.

2
Sub frame

Swisspearl® facade panels are installed on timber or metal supports.

3
Ventilated cavity

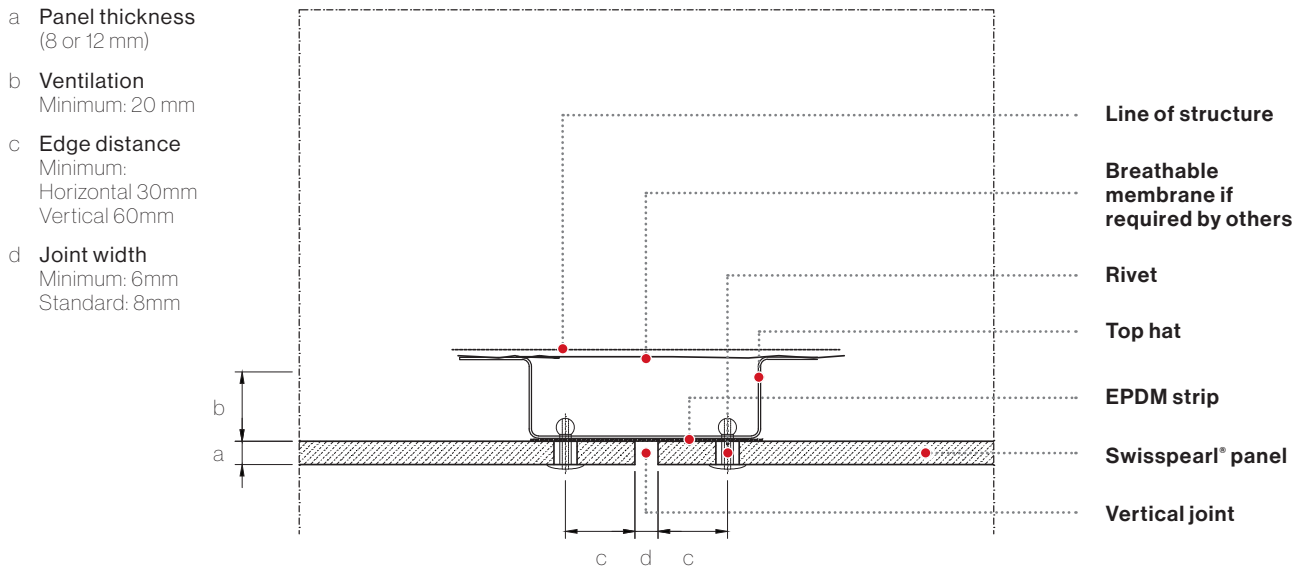
The main task of the air cavity is the evacuation of moisture and excess heat. The air circulation occurs naturally thanks to the pressure difference between bottom and top.

4
Swisspearl® cladding

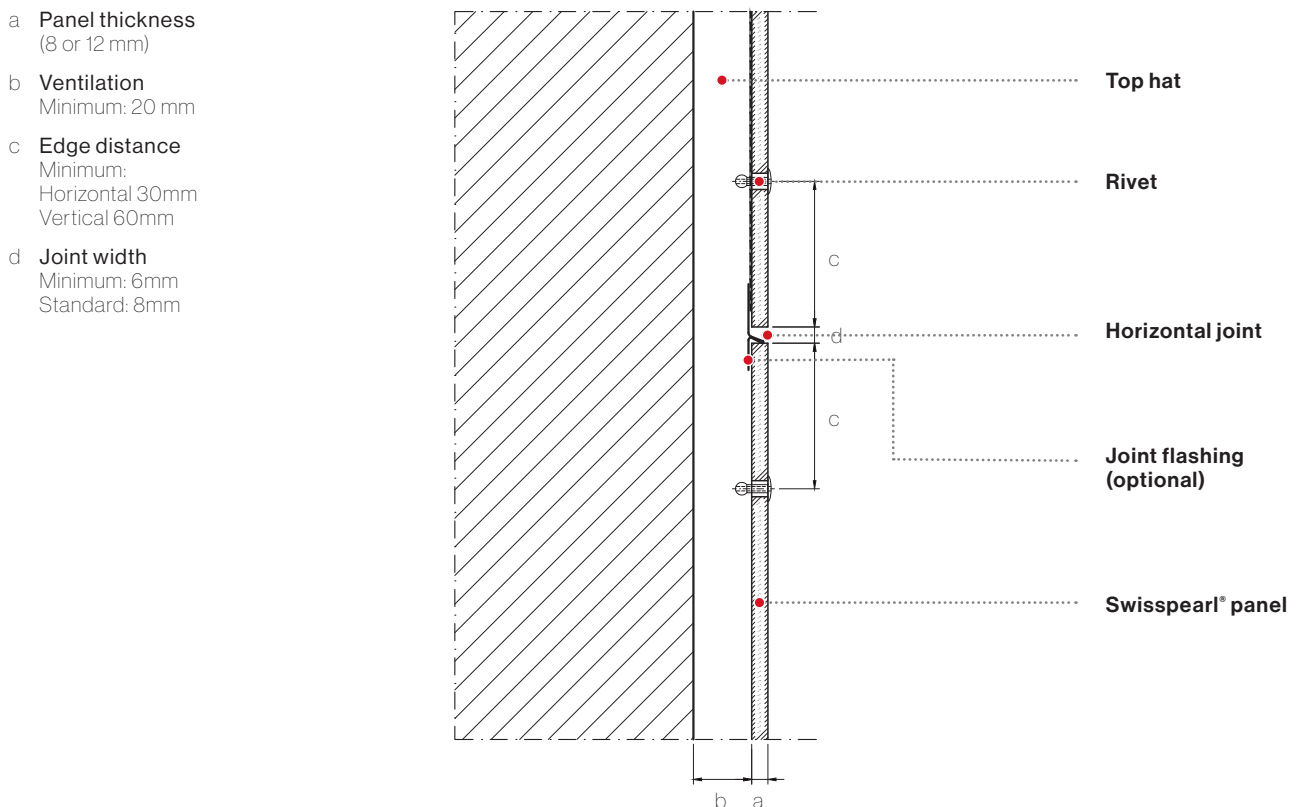
The outer skin of the building envelope has two main functions; to be aesthetically pleasing as well as protecting against influences from climate and environment.

Fixing details

Horizontal fixing (Vertical joint)



Vertical fixing (Horizontal joint)



Sustainability

Manufactured with a high level of environmental awareness, you can feel good about choosing Swisspearl® high-density fibre cement panels. 100% environmentally friendly, both the raw materials and the production process contain no harmful substances.

The fibre cement panels are made from 95% cement, pulverised limestone, water and air, while the manufacturing process uses a closed water cycle and a slow natural curing time, so it consumes far less energy than the production of most other building materials.





Additional Information



MondoClad

TECH AND INSTALLATION

<https://hvgfacades.com.au/mondoclad/mondoclad-techinstallation/>

ZINTL

COLOUR CARD BROCHURE

https://hvgfacades.com.au/wp-content/uploads/2021/04/Zintl-Colour-Card-Brochure_V3.0.pdf

TECH AND INSTALLATION

<https://hvgfacades.com.au/zintl/zintl-techinstallation/>

**SWISS
pearl®**

COLOUR CARD BROCHURE

https://hvgfacades.com.au/wp-content/uploads/2021/03/3.Swisspearl_Ranges-and-Colours-2020.pdf

TECH AND INSTALLATION

<https://hvgfacades.com.au/swisspearl/swisspearl-techinstallation/>



1300 881 712 | hvgfacades.com.au | info@hvgfacades.com.au