

vetérroTM

HIGH-DENSITY PRE-FINISHED FIBRE CEMENT



WHAT IS FIBRE CEMENT?

Fibre cement is a composite material widely used in construction for building facades. It is a mixture of sand, cement, cellulose fibres and other additives. The combination of these components results in a durable and versatile material with properties that make it resistant to rot, insects, fire, and weather elements.

Fibre cement can be used as a façade material alongside wood, masonry or aluminium, while providing advantages such as low maintenance and long-term durability. It is often used as a cladding material for residential and commercial buildings.

Vetéro™ is manufactured by a process known as "auto-clave" which is a method of applying intense heat and pressure to eliminate moisture from fibre cement materials.

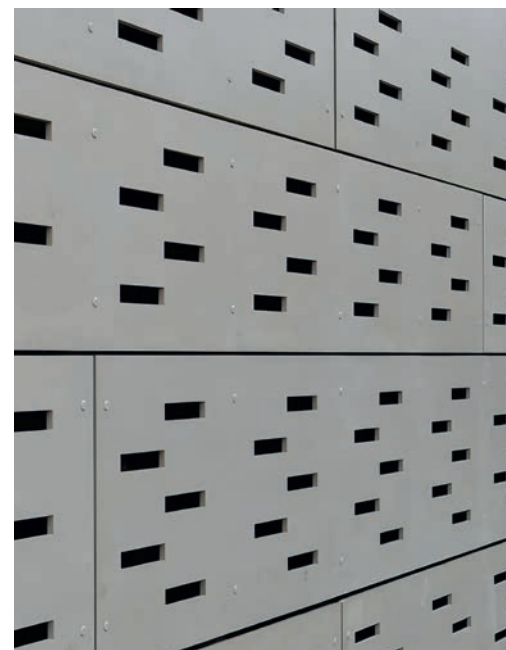
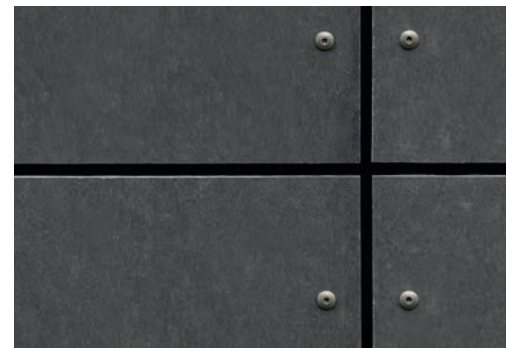
PAINTED vs THROUGH-COLOURED

Through-coloured fibre cement cladding is an appealing and robust construction material suitable for a variety of exterior surfaces.

By incorporating carefully researched polyvinyl alcohol (PVA) and selectively chosen cellulose fibres into the cement-based composition, it achieves a distinctive blend of lightness, technical prowess, and outstanding strength. The inclusion of colour ensures a seamless flow through the panel's core, making it ideal for smooth edging and cut-outs.



Why Choose
vetéro



Vetéro™ speaks to the beautiful way in which the concrete panels develop a warm, unique character over time.

Discover the superior quality of Vetéro™ High Density Fibre Cement – a remarkable through-coloured panel that celebrates the raw allure and velvety texture of cement.

The natural through-coloured panel highlights the raw beauty and matte texture of cement. Each panel has subtle variations in colour and pigment which allow for slight differences in its tonality and texture, making it unique. With time and weather, these subtle textures are enhanced – and the panels age like a 'fine wine'. This warmth and sense of character makes the product a perfect fit for community buildings such as schools and hospitals.

Vetéro™ is designed and engineered in Europe, so has a rich backstory of European excellence and designer detail. It stands as a testament to nature's finest elements, promising an environmentally friendly and enduring solution.

Vetéro™ presents a multitude of benefits, such as minimal maintenance, exceptional durability and remarkable scratch resistance, making it the perfect solution for any project.

Boasting high-impact resistance, noise reduction, and thermal properties, coupled with a 10-year warranty, its comprehensive fixing system, encompassing panels, battens, and accessories, not only simplifies installation but also reduces the overall time required.

Vetéro™ is available in multiple stocked colours and made to order and offers flexibility with sheet lengths of 2.5m and 3.05m, contributing to a reduction in material waste.

Vetéro™ is ideal for new projects as well as recladding applications, making it a perfect solution for internal and external fibre cement wall cladding for aged care, healthcare, government, education, commercial and residential projects.

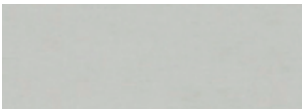

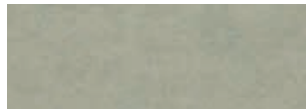

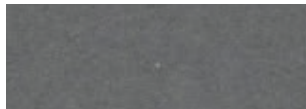


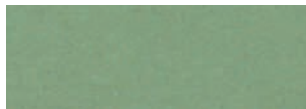
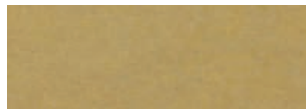




VETÉRRO™ BENEFITS

- ✓ Weather and UV Resistant
- ✓ Enduring longevity
- ✓ Effortless installation across all climates
- ✓ Minimal maintenance demands
- ✓ Proven performance
- ✓ Elimination of cracks, paint, or sealant concerns
- ✓ Deemed non-combustible, hard-wearing and impact resistant
- ✓ Extensive colours and finishes
- ✓ Highly durable fibre cement cladding
- ✓ Nationwide distribution from mainland state capital branches
- ✓ Sustainable and environmentally friendly fibre cement wall cladding
- ✓ Environmental Product Declaration (EPD) – European Manufacture Supplied
- ✓ Rear ventilated façade
- ✓ Full local architectural, technical, and sales support

Introducing the Vetterro Range

VETÉRRO™ LUSO

Its outstanding mechanical properties position it as one of the most fitting cladding materials for dependable, sophisticated, and top-tier solutions. Its surface is distinguished by subtle colour variations and delicate, smooth lines.

			<div>STOCKED</div> <div>LENGTH 2500mm / 3050mm</div> <div>WIDTH 1250mm</div> <div>THICKNESS 8mm</div> <div>WEIGHT 13.6kg/m²</div> <div>SURFACE Smooth Matte</div>
WHITE	NATURAL	CREAM	
			
GREY	DARK GREY	CHARCOAL	
			
BLUE	GREEN	YELLOW	<div>MADE TO ORDER</div> <div>LENGTH 2500mm / 3050mm</div> <div>WIDTH 1250mm</div> <div>THICKNESS 8mm</div> <div>WEIGHT 13.6kg/m²</div> <div>SURFACE Smooth Matte</div>
			
ROSÉ	TERRACOTTA	LIGHT BROWN	
			
DESERT			

Colours displayed on this colour card are a guide only and have been matched as close as possible to production standards under daylight conditions. Due to the nature of the printing process some degree of colour and gloss level variation may occur. Where more than one finish is available product colour may vary. We recommend that you use production line prepared samples for final colour selection or approval.



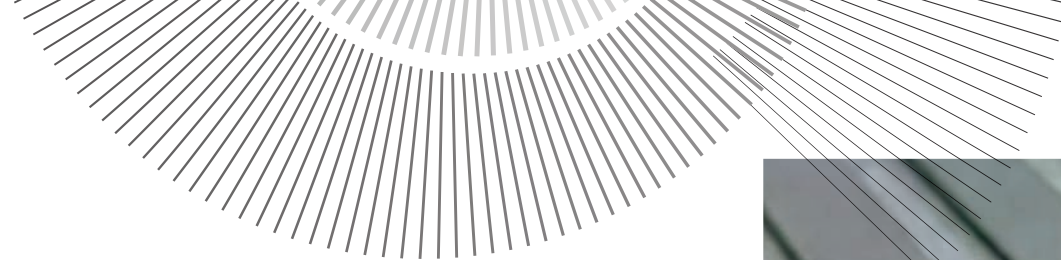
VETÉRRO™ GROOVE

Infuse character into your architectural masterpiece with Vetéro™ Groove. Its deep parallel lines lend depth and allure to your structure.

MADE TO ORDER	
LENGTH	2500mm / 3050mm
WIDTH	1250mm
THICKNESS	8mm
WEIGHT	12.4kg/m ²
SURFACE	Natural textured



Colours displayed on this colour card are a guide only and have been matched as close as possible to production standards under daylight conditions. Due to the nature of the printing process some degree of colour and gloss level variation may occur. Where more than one finish is available product colour may vary. We recommend that you use production line prepared samples for final colour selection or approval.

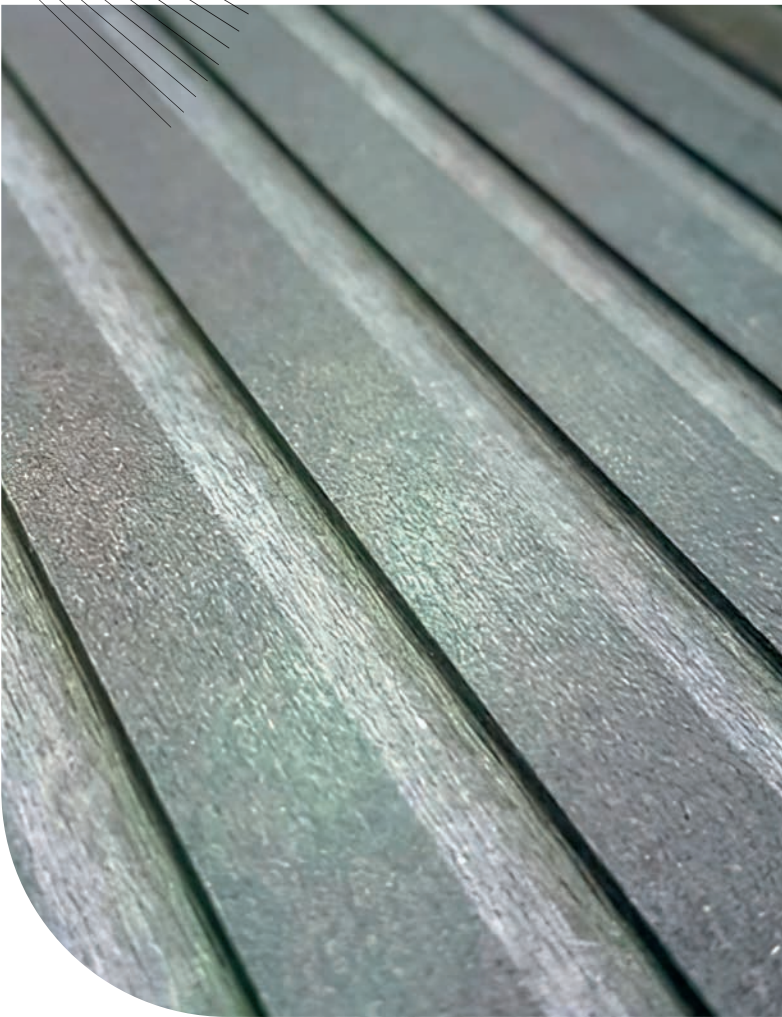


VETÉRRO™ RIGO

LINEAR GROOVED SURFACE

Its slight surface and colour disparities bestow an individualistic charm, making a bold architectural statement.

MADE TO ORDER	
LENGTH	2500mm / 3050mm
WIDTH	1250mm
THICKNESS	9.5mm
WEIGHT	14.1kg/m ²
SURFACE	Linear grooves

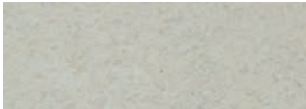


Colours displayed on this colour card are a guide only and have been matched as close as possible to production standards under daylight conditions. Due to the nature of the printing process some degree of colour and gloss level variation may occur. Where more than one finish is available product colour may vary. We recommend that you use production line prepared samples for final colour selection or approval.

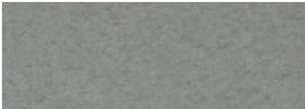
VETÉRRO™ SURFACE

A rustic affair – immerse in the charm of Vetéro™ Surface, an irregularly textured finish that emulates the allure of natural stone.

MADE TO ORDER	
LENGTH	2500mm / 3050mm
WIDTH	1200mm
THICKNESS	8mm
WEIGHT	15.1kg/m²
SURFACE	Natural stone



NATURAL



GREY



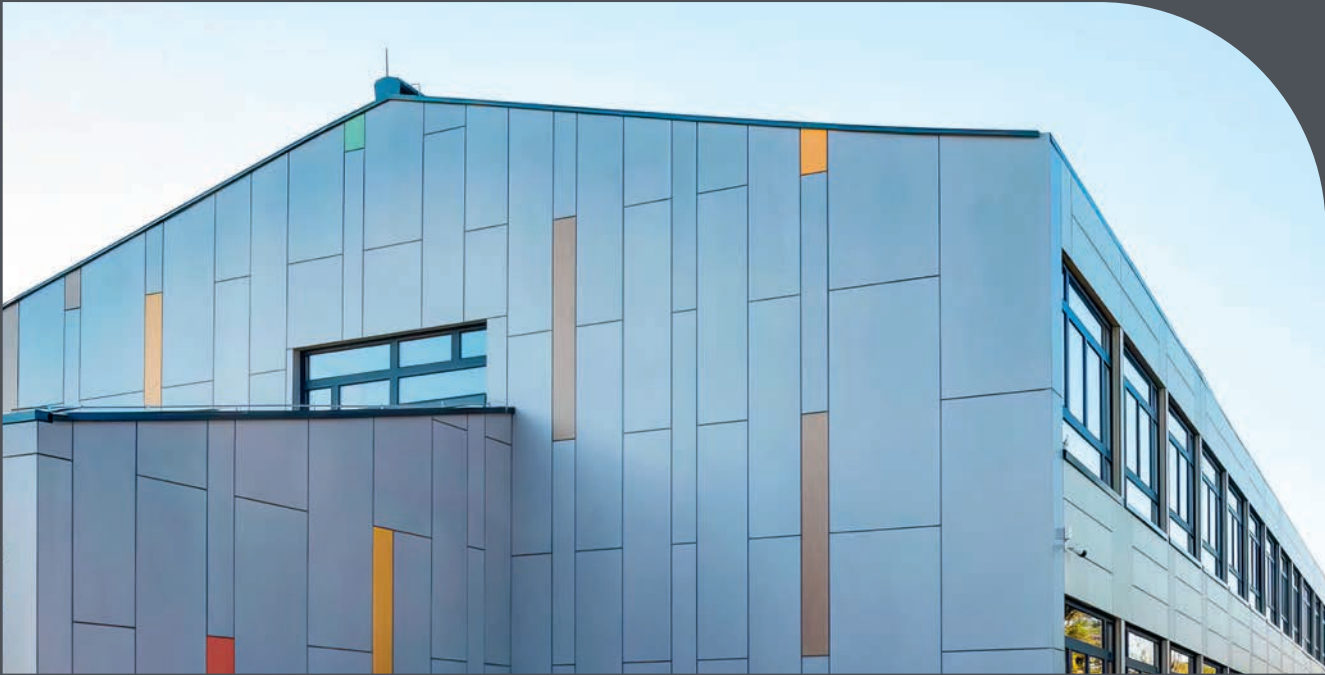
DARK GREY

TAILORED TO YOUR VISION

- ✓ Vetéro™ High Density Fibre Cement is offered in standard sizes, while also accommodating custom sizes through locally fabricated cutting catering to your individual project needs.
- ✓ Standard sizes are readily available and stocked locally.



Colours displayed on this colour card are a guide only and have been matched as close as possible to production standards under daylight conditions. Due to the nature of the printing process some degree of colour and gloss level variation may occur. Where more than one finish is available product colour may vary. We recommend that you use production line prepared samples for final colour selection or approval.



NATURAL COLOUR VARIATIONS

Vetéro™ fibre cement cladding come in a diverse range of profiles, each exhibiting its own unique features and attributes. Minor variations in colour lightness are considered acceptable.

With a natural, textured surface, Vetéro™ reveals the fibres and inherent characteristics of its raw materials, complete with distinct sanding lines. While occasional imperfections like dots and spots may be visible, the surface appears homogeneous from a distance of 3-5 meters.

Over time and with changing seasons, the natural aging process of the fibre cement imparts subtle traces on the surface, resulting in a façade that gracefully develops a distinctive characteristics.

VENTILATED FACADES

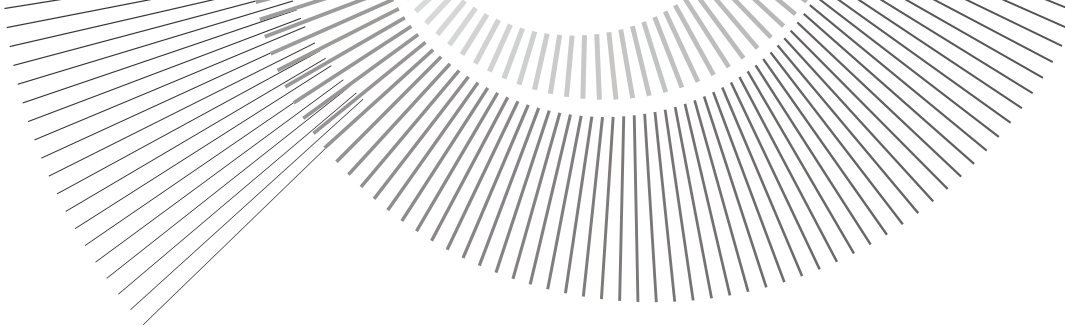
In building construction a ventilated façade (or rainscreen) plays a pivotal role in safeguarding a building from the elements, whilst also helping to improve the energy efficiency of the structure.

A well designed and constructed ventilated façade will; allow air to circulate through the cavity and move any vapour away; remove any moisture from the weatherproof barrier, allowing it to drain away.

In the case of express joint fibre cement panel systems such as Vetéro™, in conjunction with continuous insulation the system, when correctly installed, will provide greatly improved thermal performance.

HEALTH AND SAFETY

As with other concrete products that contain quartz, cutting or drilling this product can create airborne crystalline silica which can lead to various health problems. Please refer to our MSDS for more information.



VETÉRRO™ TECHNICAL DATA SHEET

Vetérro™ are asbestos-free double-pressed and autoclaved flat boards. They are reinforced with cellulose fibres and through coloured, with a smoothed surface. Vetérro™ boards are compliant to AS2908.2.

*wet over dry	Unit of measure	Value
Standard Dimensions** and Geometry		
Length	mm	2500 3050
Width	mm	1250
Thickness		5-6-8-10-12
Tolerances on nominal dimensions	Classification according to EN 12467:2018	Level 1
- on length	mm	± 2
- on width	mm	± 1
- on straightness of edges	%	0,1
- on squareness of edges	mm/m	2
- on thickness for smooth sheets	mm	± 0,5
Nominal weight	kg/m²	14.4 (t=8mm) 18.0 (t=10mm) 21.6 (t=12mm)
Physical Properties		
Density (dry)	kg/m³	1600 ± 50
Mechanical Properties		
E modulus of elasticity (dry)		
- longitudinal	GPa	14
- transversal	GPa	12
E modulus of elasticity (wet)		
- longitudinal	GPa	11
- transversal	GPa	9
Bending strength (wet)	MPa	≥24
Resistance (Charpy test)	According to EN 179-1:2010	
- longitudinal	kJ/m²	4.3
- transversal	kJ/m²	3.1

*wet over dry	Unit of measure	Value
Hygrometrical Properties		
Natural humidity	%	10 ÷ 15
Max water absorption*	%	≤25
Moisture movement – Relative humidity change from 30% to 90%		
- longitudinal	mm/m	0.7
- transversal	mm/m	0.8
Thermal and Water Vapour Properties (untreated boards)		
Vapor resistance factor, µ – according to EN 12572:2016		4.9
Thermal conductivity – according to EN 12664:2002	W/mK	0.42
Thermal expansion coefficient – according to EN 10545-8:2014		
- longitudinal	1/°C	1.71* 10-6 per degree celsius
- transversal	1/°C	0.58* 10-6 per degree celsius
Other Properties		
Superior calorific power (through coloured)	MJ/kg	1.2 (12 mm) 1.3 (5 mm)
Fire rating class	Permitted for use per NCC 2022 VOL 1 C2D10(6)(d), and NCC 2022 VOL 2 H3D2 (1)(d).	
Freeze-thaw performance		RL ≥ 0.75
Durability classification	According to EN 12467:2018	category A
Strength classification	According to EN 12467:2018	class 5
CE marked product according to		EN12467

If not otherwise specified the tests are in accordance to EN 12467.



WHERE EXCELLENCE MEETS IMAGINATION.
ELEVATE YOUR SPACE TODAY.



DEEMED
NON-COMBUSTIBLE

10 YEAR
warranty

By **HVG** façades

hvgfacades.com.au | 1300 881 712

SYDNEY

29 Henderson Street
Turrella NSW 2205

MELBOURNE

25 West Park Drive
Derrimut VIC 3026

BRISBANE

128 Mica Street
Carole Park QLD 4300

PERTH

72 Bushland Ridge
Bibra Lake WA 6163

ADELAIDE

57 Barnes Avenue
Marleston SA 5033