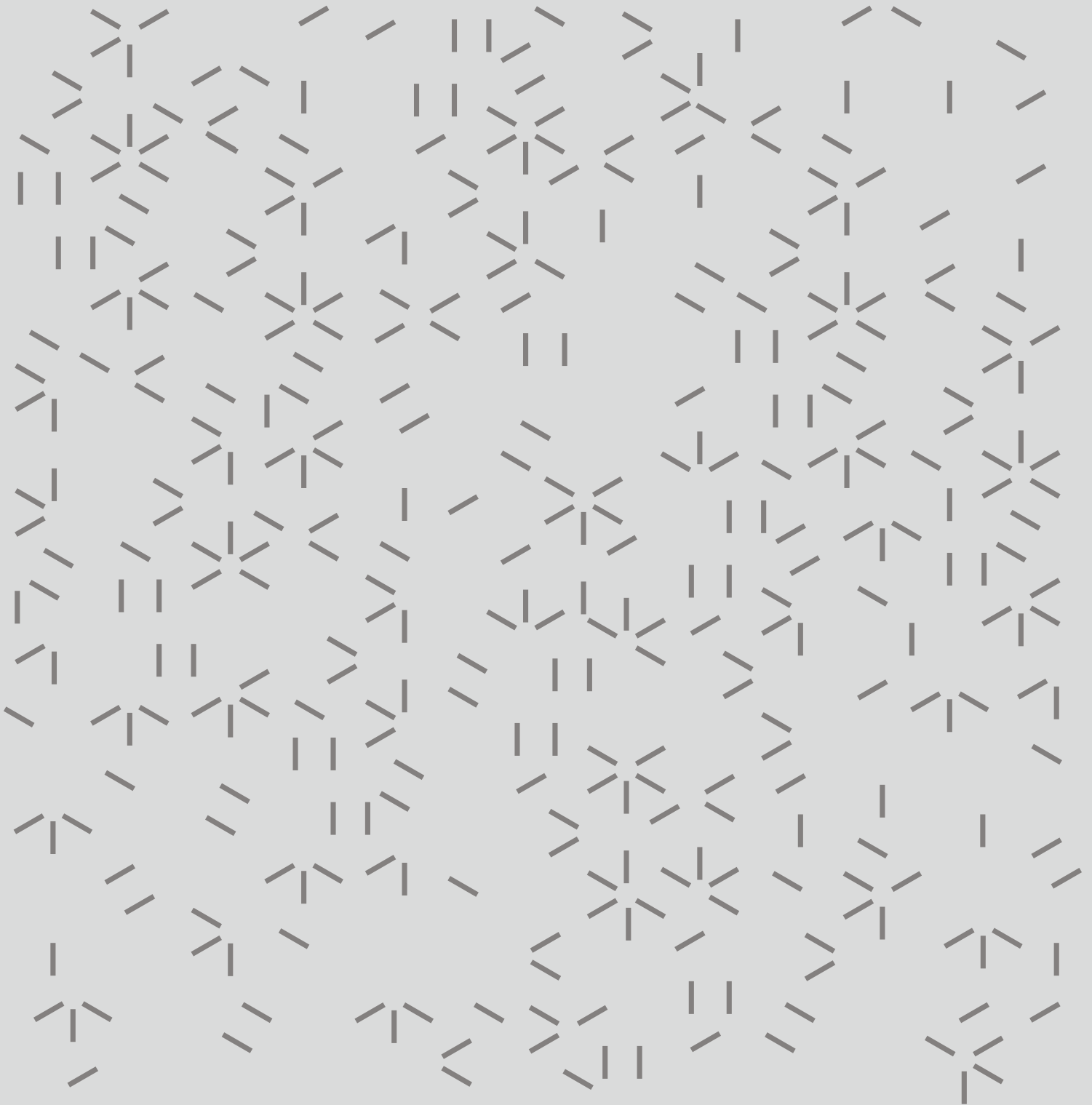


# ZINTL®

PREMIUM INTERLOCKING  
ALUMINIUM CLADDING SYSTEM



VERTICAL FIXING DETAIL

# ZINTL®

PREMIUM INTERLOCKING  
ALUMINIUM CLADDING SYSTEM

## CONTENTS

### **LINEA**

VERTICAL FIXING DETAILS 3

### **SHADOW**

VERTICAL FIXING DETAILS 17

### **SHIPLAP**

VERTICAL FIXING DETAILS 31

### **STANDING SEAM**

VERTICAL FIXING DETAILS 45

# ZINTL®

PREMIUM INTERLOCKING  
ALUMINIUM CLADDING SYSTEM

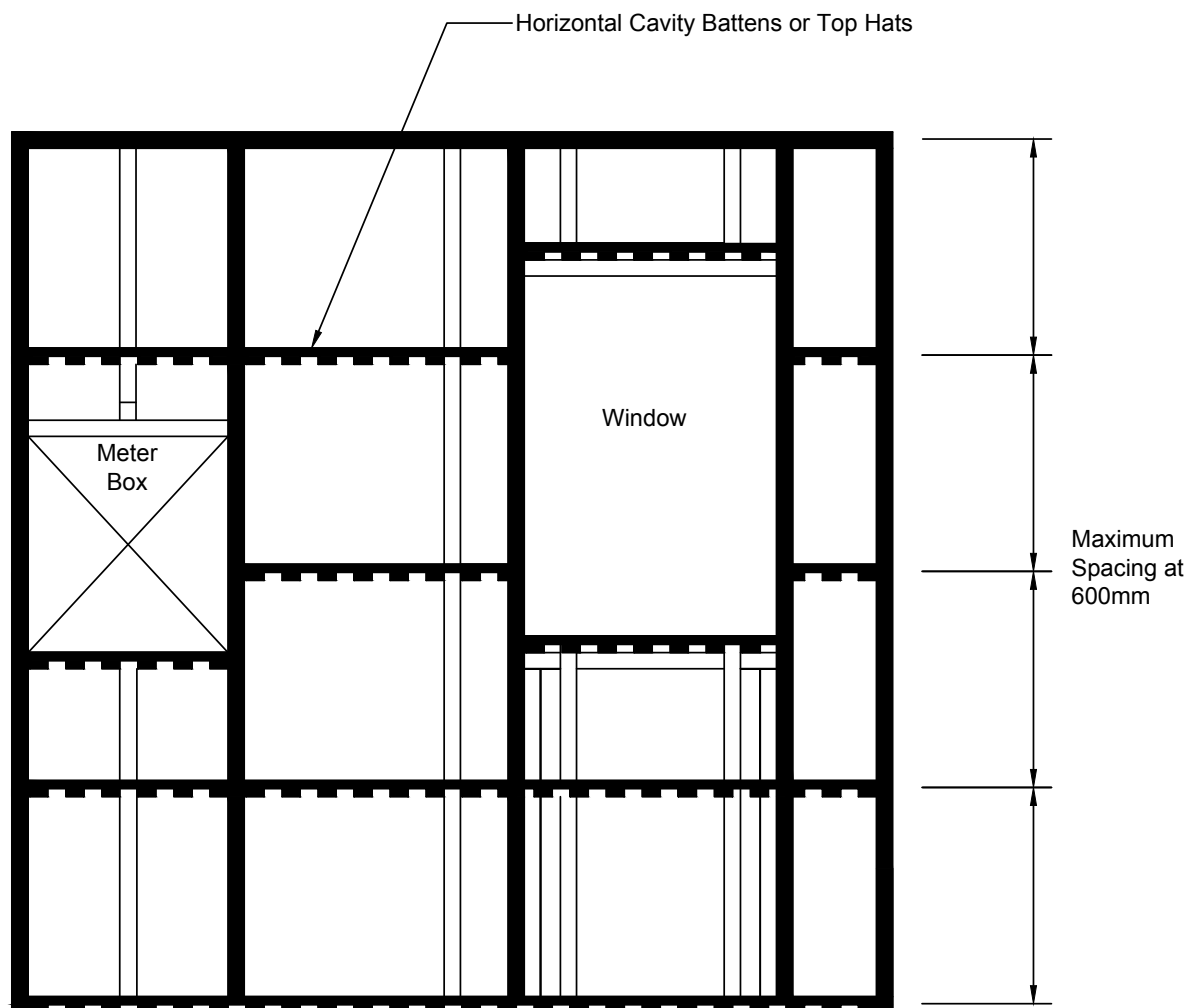
LINEA  
VERTICAL FIXING DETAILS



# ZINTL<sup>®</sup>

## LINEA VERTICAL FIXING DETAIL

### VERTICAL CLADDING WALL LAYOUT



#### LINEA VERTICAL FIXING DETAIL

This information is generic in nature and supplied for guidance purposes only. Top Hat dimensions are nominal. Dimensions, spacing, spans and stiffener requirements will need to be confirmed by a suitably qualified professional to suit the specific application.

By **HVG** façades

[hvgfacades.com.au](http://hvgfacades.com.au)

1300 881 712

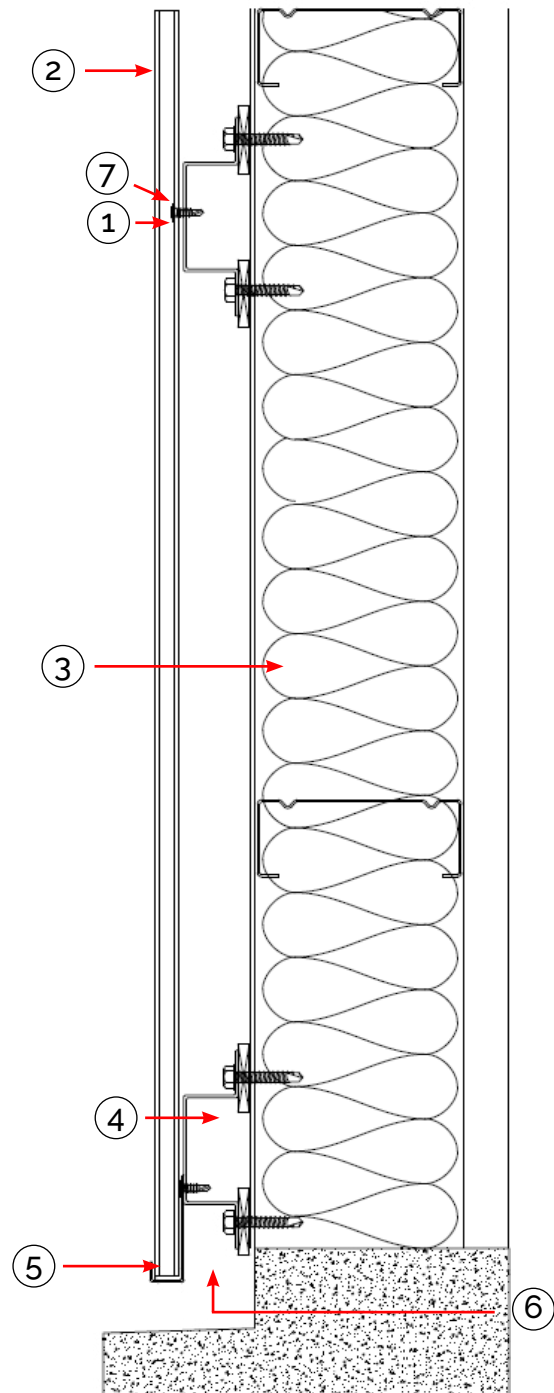
[info@hvgfacades.com.au](mailto:info@hvgfacades.com.au)

# ZINTL®

## LINEA VERTICAL FIXING DETAIL

### BASE DETAIL

- ① Universal Fixing Clip and Screw
- ② ZINTL Board
- ③ Sisalation as per specification
- ④ GAL Top Hat
- ⑤ Base Channel
- ⑥ 15mm Dip Edge
- ⑦ EPDM Foam Strip (optional)



### LINEA VERTICAL FIXING DETAIL

This information is generic in nature and supplied for guidance purposes only. Top Hat dimensions are nominal. Dimensions, spacing, spans and stiffener requirements will need to be confirmed by a suitably qualified professional to suit the specific application.

By **HVG** façades

[hvgfacades.com.au](http://hvgfacades.com.au)

1300 881 712

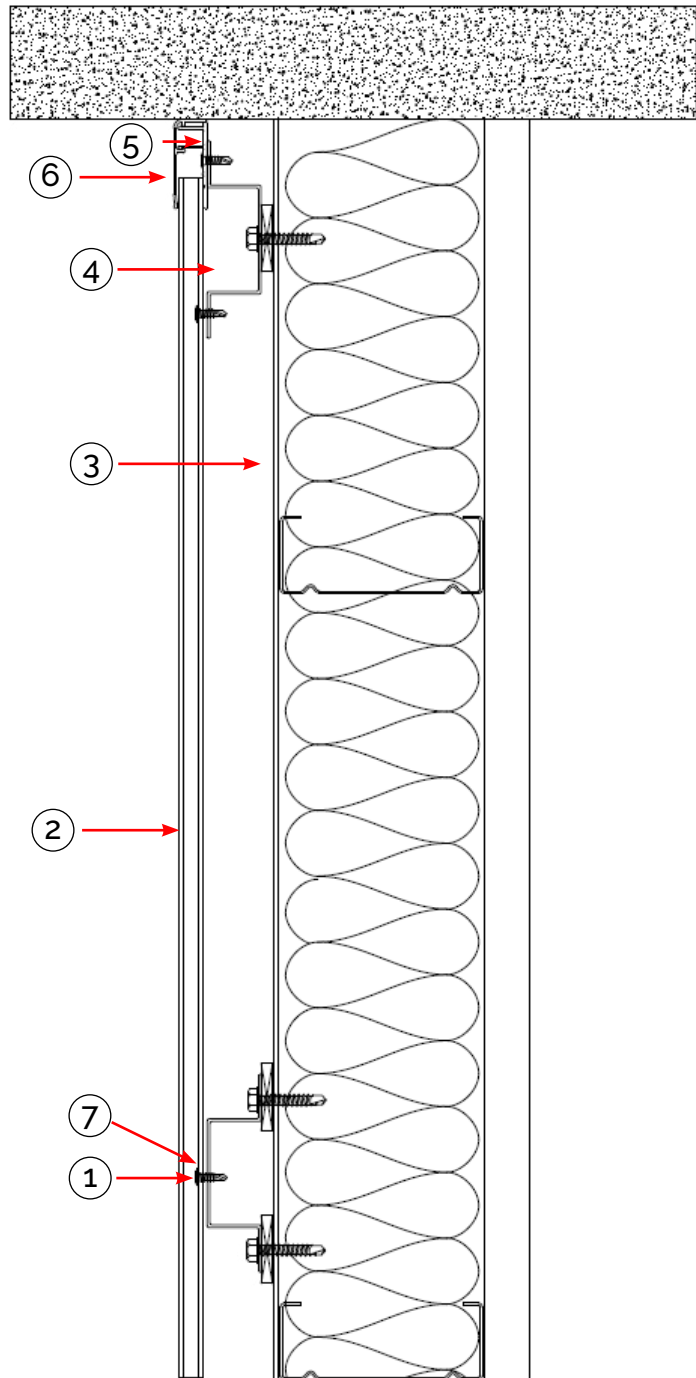
[info@hvgfacades.com.au](mailto:info@hvgfacades.com.au)

# ZINTL<sup>®</sup>

## LINEA VERTICAL FIXING DETAIL

### SOFFIT DETAIL

- ① Universal Fixing Clip and Screw
- ② ZINTL Board
- ③ Sisalation as per specification
- ④ GAL Top Hat
- ⑤ Jamb Flashing Base
- ⑥ Jamb Flashing Cap
- ⑦ EPDM Foam Strip (optional)



#### LINEA VERTICAL FIXING DETAIL

This information is generic in nature and supplied for guidance purposes only. Top Hat dimensions are nominal. Dimensions, spacing, spans and stiffener requirements will need to be confirmed by a suitably qualified professional to suit the specific application.

By **HVG** façades

[hvgfacades.com.au](http://hvgfacades.com.au)

1300 881 712

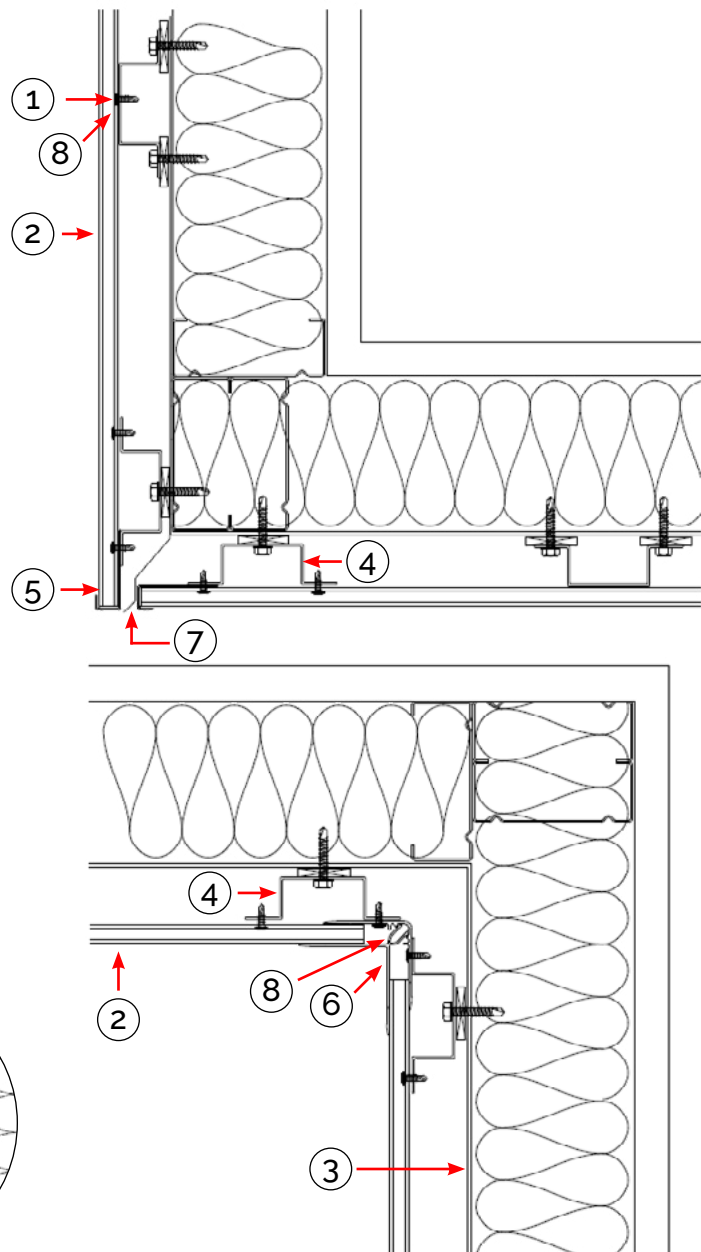
[info@hvgfacades.com.au](mailto:info@hvgfacades.com.au)

# ZINTL®

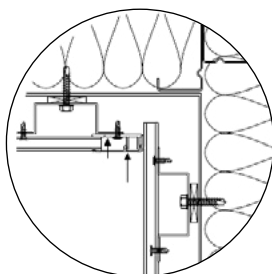
## LINEA VERTICAL FIXING DETAIL

### WALL TO SOFFIT DETAIL

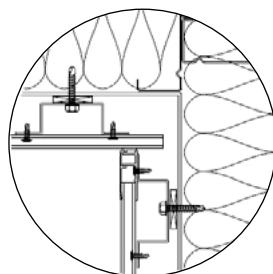
- ① Universal Fixing Clip and Screw
- ② ZINTL Board
- ③ Sisalation as per specification
- ④ GAL Top Hat
- ⑤ Base Channel
- ⑥ Female and Male Corner
- ⑦ Flashing by others
- ⑧ EPDM Foam Strip (optional)



OPTIONAL



OPTIONAL



#### LINEA VERTICAL FIXING DETAIL

This information is generic in nature and supplied for guidance purposes only. Top Hat dimensions are nominal. Dimensions, spacing, spans and stiffener requirements will need to be confirmed by a suitably qualified professional to suit the specific application.

By **HVG** façades

[hvgfacades.com.au](http://hvgfacades.com.au)

1300 881 712

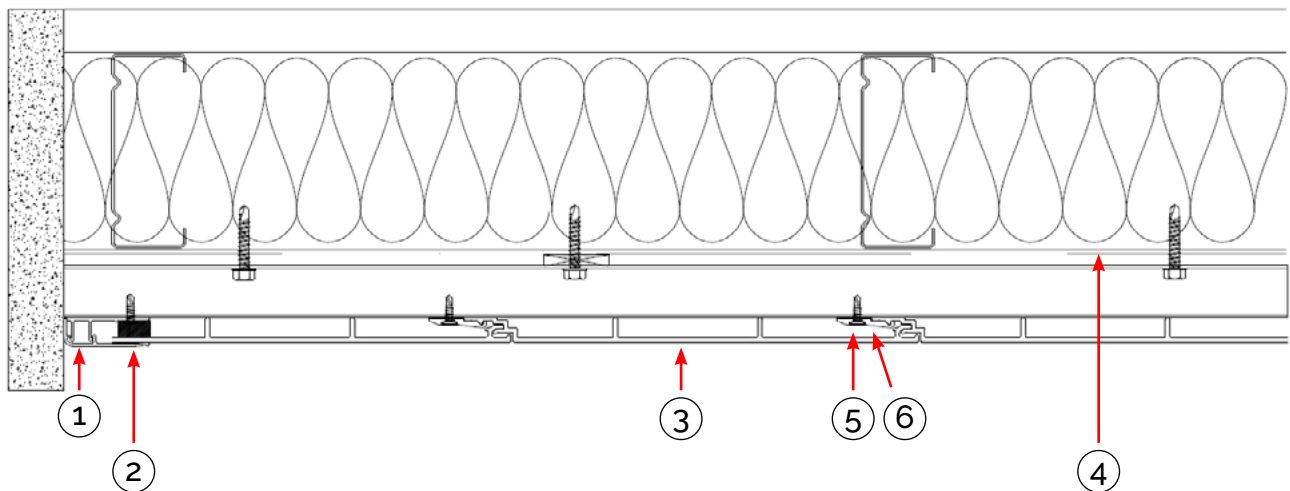
[info@hvgfacades.com.au](mailto:info@hvgfacades.com.au)

# ZINTL®

## LINEA VERTICAL FIXING DETAIL

### END FINISH DETAIL

- ① Jamb Flashing Cap
- ② Jamb Flashing Base
- ③ ZINTL Board
- ④ Sisalation as per specification
- ⑤ Universal fixing clip and screw
- ⑥ EPDM Foam Strip (optional)



#### LINEA VERTICAL FIXING DETAIL

This information is generic in nature and supplied for guidance purposes only. Top Hat dimensions are nominal. Dimensions, spacing, spans and stiffener requirements will need to be confirmed by a suitably qualified professional to suit the specific application.

By **HVG** façades

[hvgfacades.com.au](http://hvgfacades.com.au)

1300 881 712

[info@hvgfacades.com.au](mailto:info@hvgfacades.com.au)

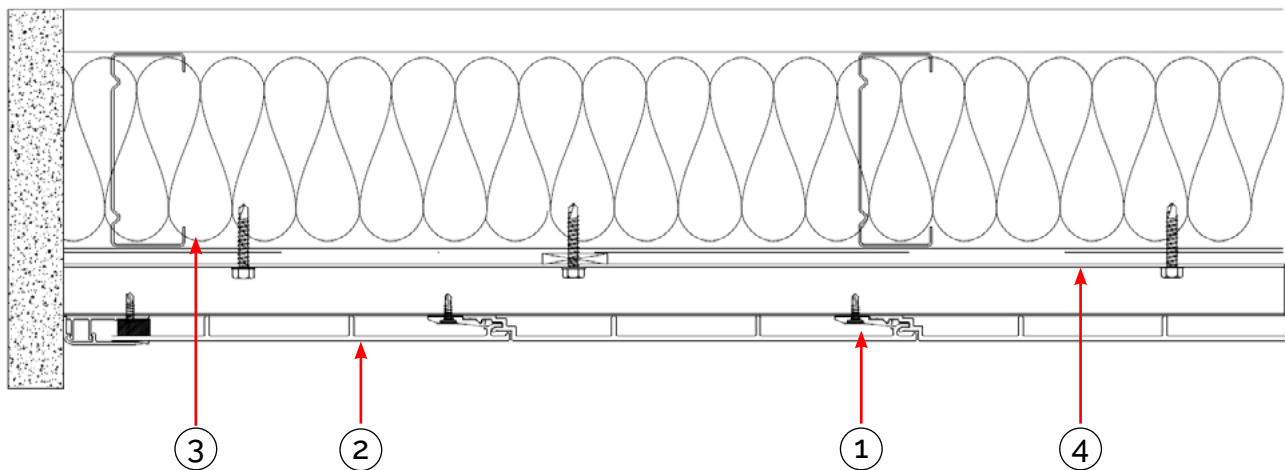


# ZINTL®

## LINEA VERTICAL FIXING DETAIL

### GENERAL CONNECTION DETAIL

- ① Universal Fixing Clip and Screw
- ② ZINTL Board
- ③ Sisalation as per specification
- ④ GAL Top Hat



#### LINEA VERTICAL FIXING DETAIL

This information is generic in nature and supplied for guidance purposes only. Top Hat dimensions are nominal. Dimensions, spacing, spans and stiffener requirements will need to be confirmed by a suitably qualified professional to suit the specific application.

By **HVG** façades

[hvgfacades.com.au](http://hvgfacades.com.au)

1300 881 712

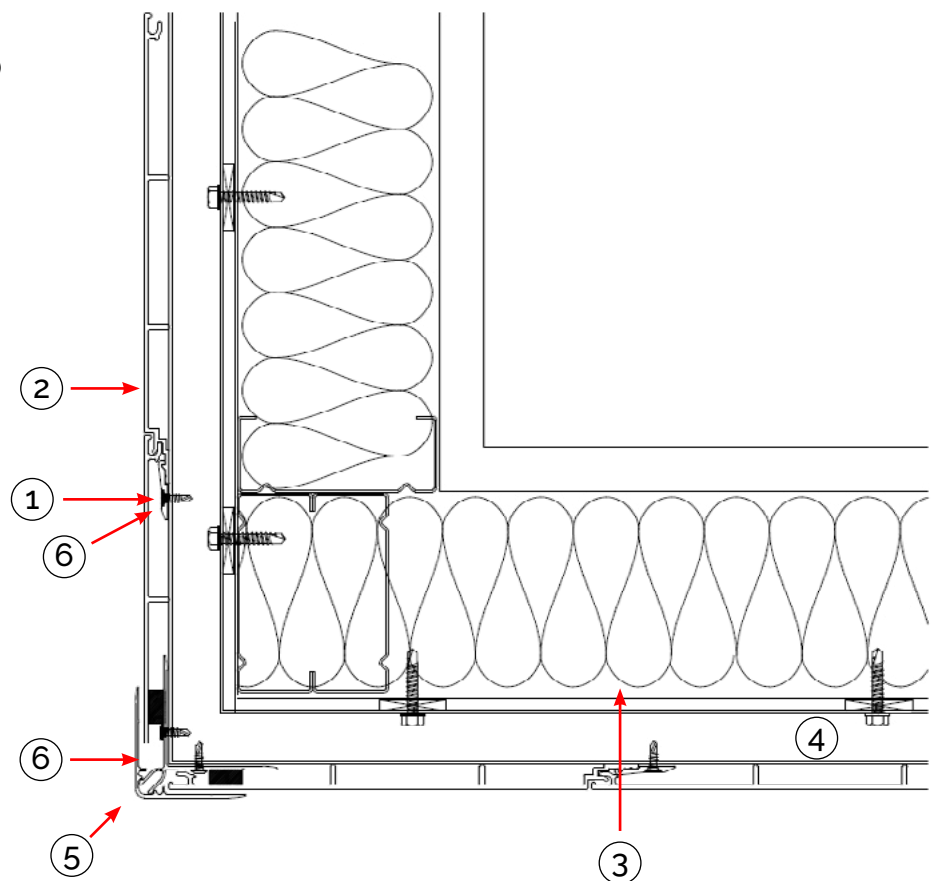
[info@hvgfacades.com.au](mailto:info@hvgfacades.com.au)

# ZINTL®

## LINEA VERTICAL FIXING DETAIL

### EXTERNAL CORNER DETAIL

- ① Universal Fixing Clip and Screw
- ② ZINTL Board
- ③ Sisalation as per specification
- ④ GAL Top Hat
- ⑤ Female and Male Corner
- ⑥ EPDM Foam Strip (optional)



#### LINEA VERTICAL FIXING DETAIL

This information is generic in nature and supplied for guidance purposes only. Top Hat dimensions are nominal. Dimensions, spacing, spans and stiffener requirements will need to be confirmed by a suitably qualified professional to suit the specific application.

By **HVG** façades

[hvgfacades.com.au](http://hvgfacades.com.au)

1300 881 712

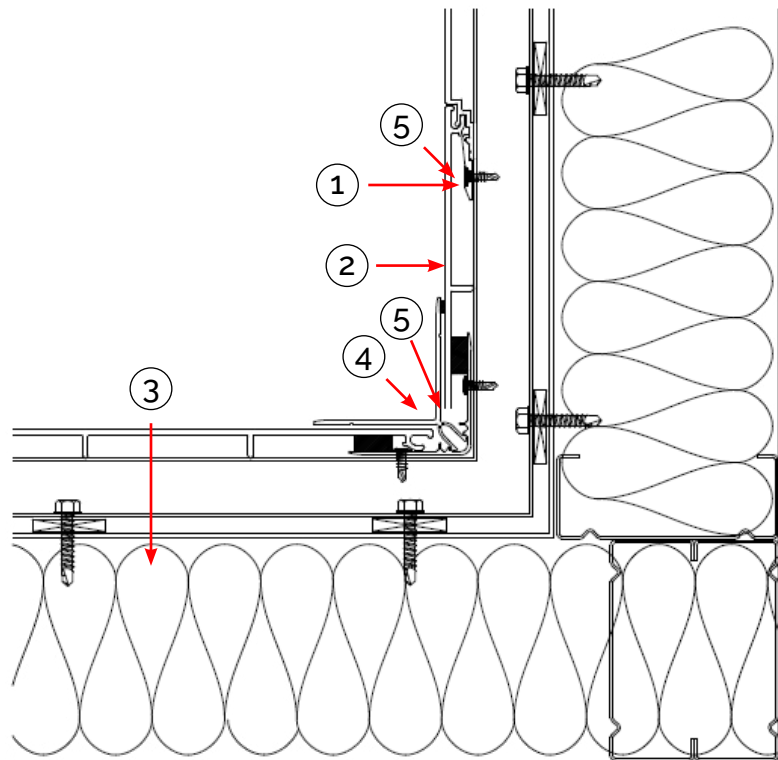
[info@hvgfacades.com.au](mailto:info@hvgfacades.com.au)

# ZINTL®

## LINEA VERTICAL FIXING DETAIL

### INTERNAL CORNER DETAIL

- ① Universal Fixing Clip and Screw
- ② ZINTL Board
- ③ Sisalation as per specification
- ④ Female and Male Corner
- ⑤ EPDM Foam Strip (optional)



#### LINEA VERTICAL FIXING DETAIL

This information is generic in nature and supplied for guidance purposes only. Top Hat dimensions are nominal. Dimensions, spacing, spans and stiffener requirements will need to be confirmed by a suitably qualified professional to suit the specific application.

By **HVG** façades

[hvgfacades.com.au](http://hvgfacades.com.au)

1300 881 712

[info@hvgfacades.com.au](mailto:info@hvgfacades.com.au)

ZINTL

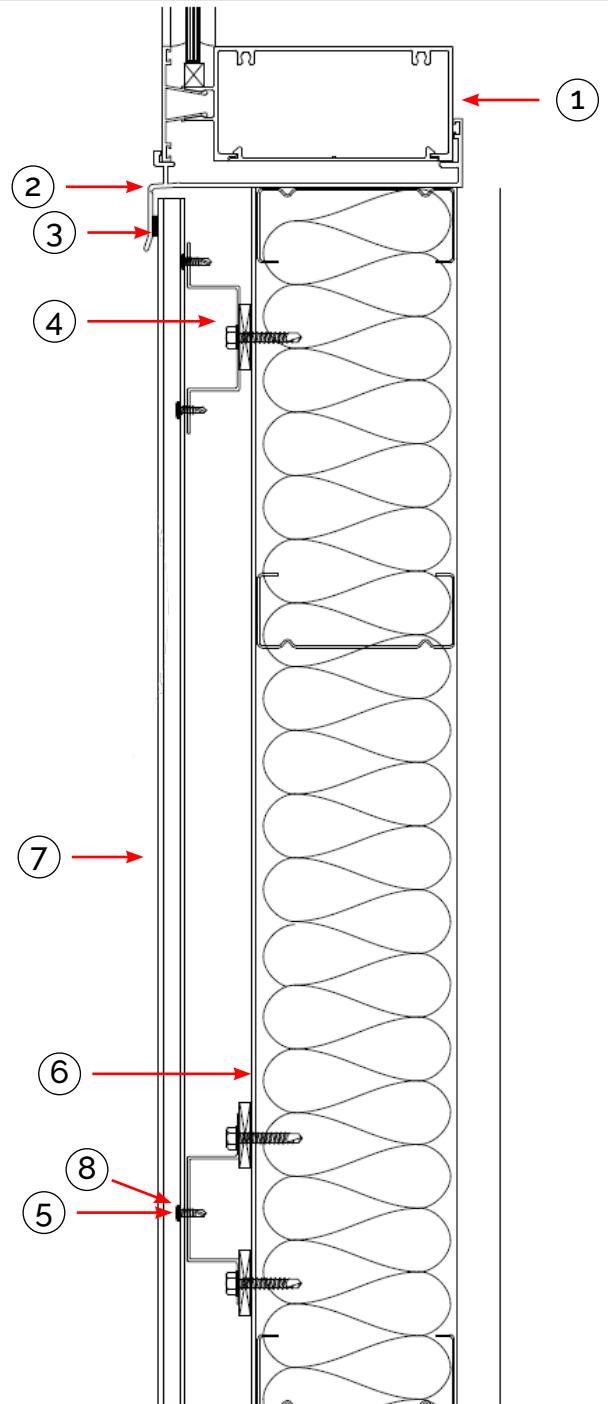
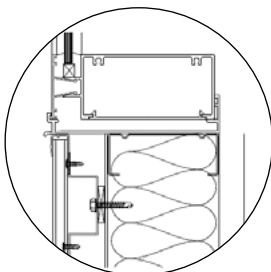
# ZINTL®

## LINEA VERTICAL FIXING DETAIL

### WINDOW SILL DETAIL

- ① Window Subframe
- ② Window Sill
- ③ EPDM Foam Tape/Caulking
- ④ GAL Top Hat
- ⑤ Universal Fixing Clip and Screw
- ⑥ Sisalation as per specification
- ⑦ ZINTL Board
- ⑧ EPDM Foam Strip (optional)

#### OPTIONAL



#### LINEA VERTICAL FIXING DETAIL

This information is generic in nature and supplied for guidance purposes only. Top Hat dimensions are nominal. Dimensions, spacing, spans and stiffener requirements will need to be confirmed by a suitably qualified professional to suit the specific application.

By **HVG** façades

[hvgfacades.com.au](http://hvgfacades.com.au)

1300 881 712

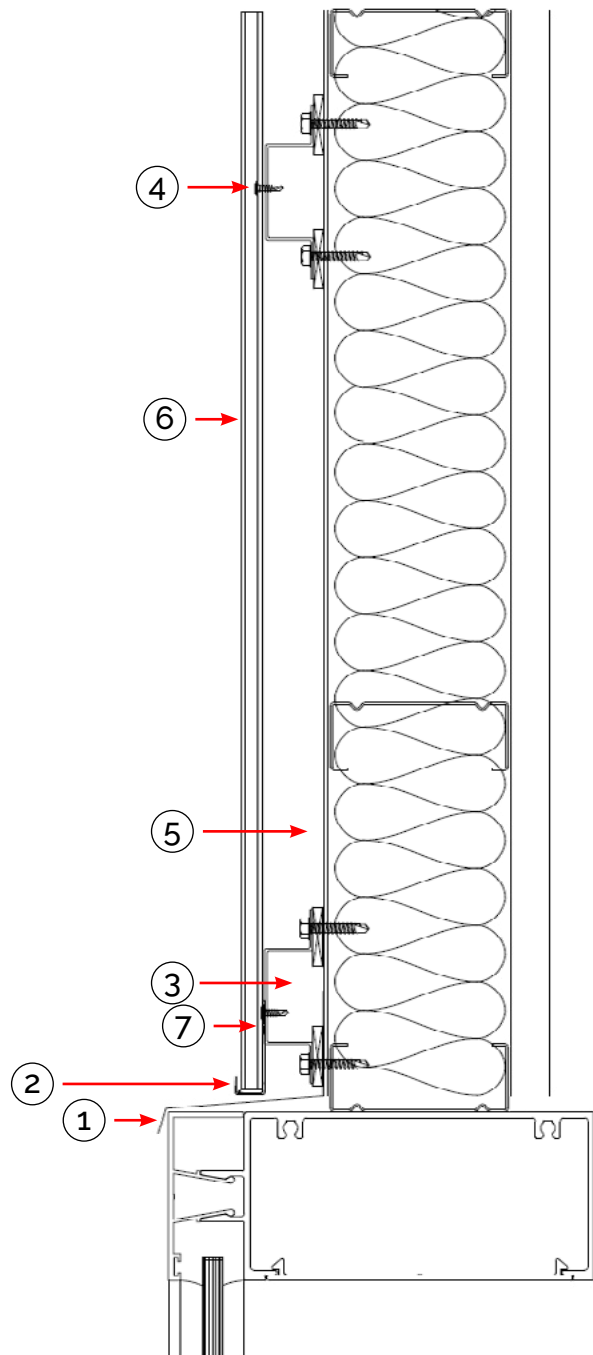
[info@hvgfacades.com.au](mailto:info@hvgfacades.com.au)

# ZINTL®

## LINEA VERTICAL FIXING DETAIL

### WINDOW HEAD DETAIL

- ① Flashing by Others
- ② Base Channel
- ③ GAL Top Hat
- ④ Universal Fixing Clip and Screw
- ⑤ Sisalation as per specification
- ⑥ ZINTL Board
- ⑦ EPDM Foam Strip (optional)



#### LINEA VERTICAL FIXING DETAIL

This information is generic in nature and supplied for guidance purposes only. Top Hat dimensions are nominal. Dimensions, spacing, spans and stiffener requirements will need to be confirmed by a suitably qualified professional to suit the specific application.

By **HVG** façades

[hvgfacades.com.au](http://hvgfacades.com.au)

1300 881 712

[info@hvgfacades.com.au](mailto:info@hvgfacades.com.au)

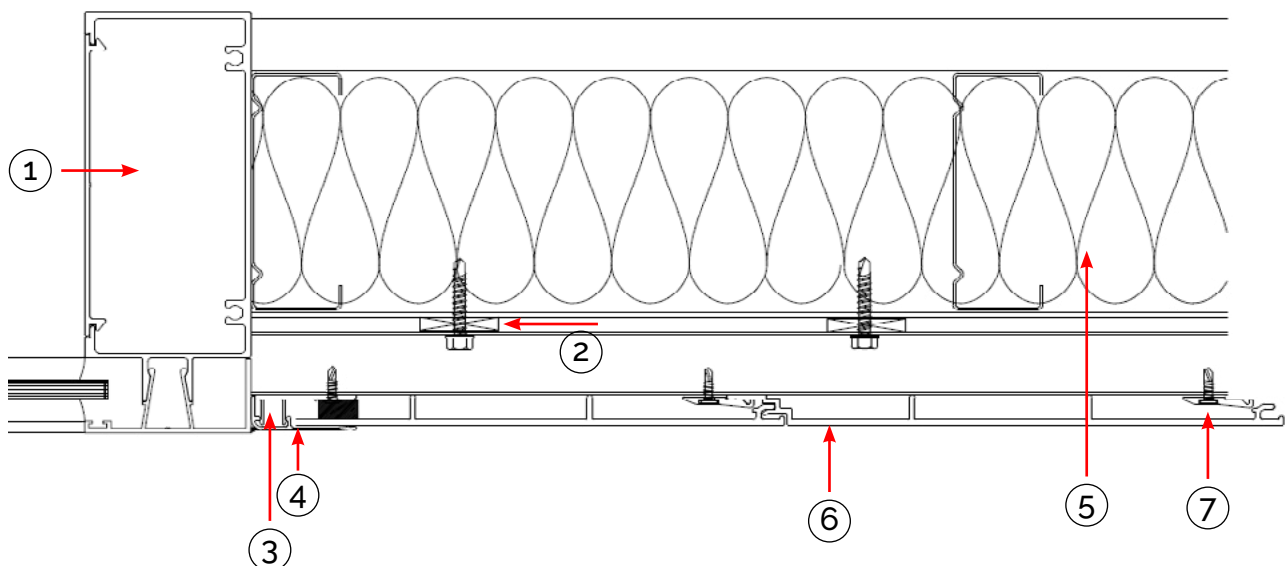
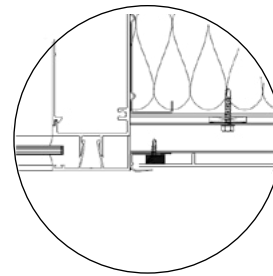
# ZINTL®

## LINEA VERTICAL FIXING DETAIL

### WINDOW JAMB DETAIL

- ① Window Subframe
- ② Packers
- ③ JAMB Flashing Base
- ④ JAMB Flashing Cap
- ⑤ Sisalation as per specification
- ⑥ ZINTL Board
- ⑦ EPDM Foam Strip (optional)

OPTIONAL



#### LINEA VERTICAL FIXING DETAIL

This information is generic in nature and supplied for guidance purposes only. Top Hat dimensions are nominal. Dimensions, spacing, spans and stiffener requirements will need to be confirmed by a suitably qualified professional to suit the specific application.

By **HVG** façades

[hvgfacades.com.au](http://hvgfacades.com.au)

1300 881 712

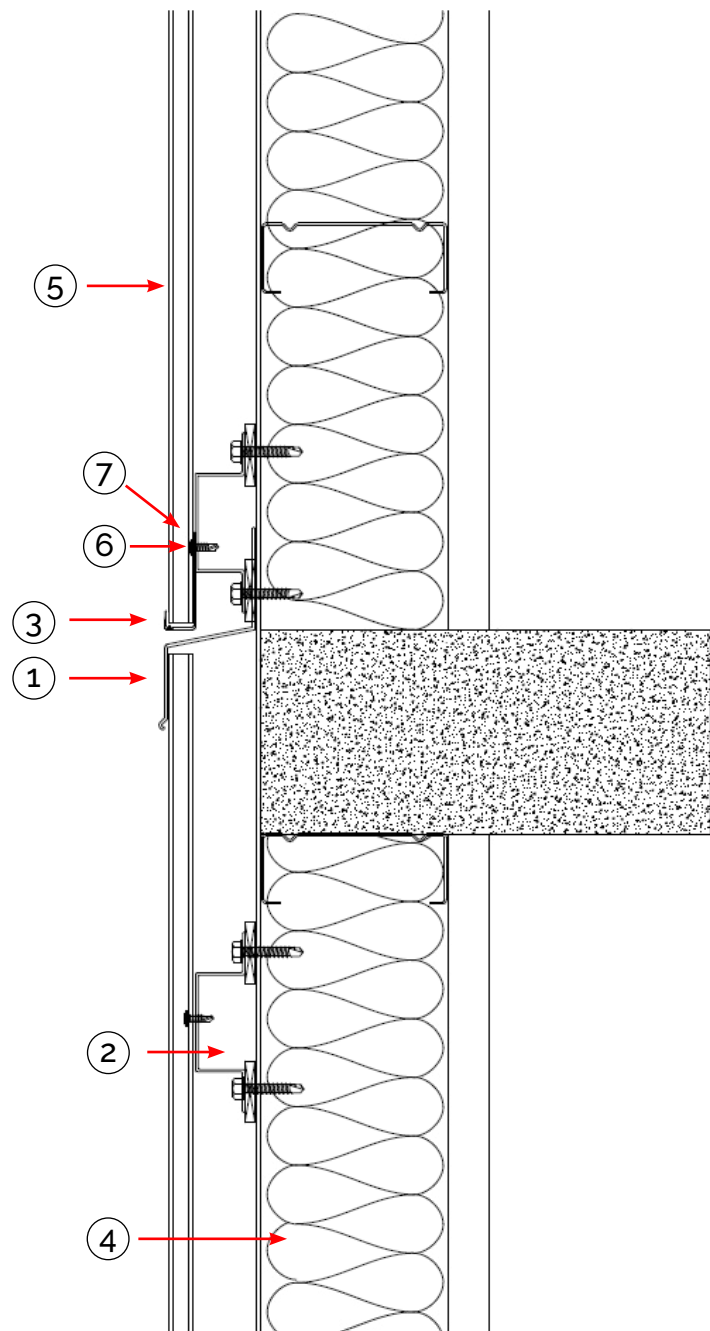
[info@hvgfacades.com.au](mailto:info@hvgfacades.com.au)

# ZINTL®

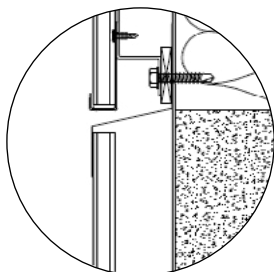
## LINEA VERTICAL FIXING DETAIL

### INTERSTOREY JOINT

- ① Interstory Joint
- ② GAL Top Hat
- ③ Base Channel
- ④ Sisalation as per specification
- ⑤ ZINTL Board
- ⑥ Universal Fixing Clip and Screw
- ⑦ EPDM Foam Strip (optional)



OPTIONAL



#### LINEA VERTICAL FIXING DETAIL

This information is generic in nature and supplied for guidance purposes only. Top Hat dimensions are nominal. Dimensions, spacing, spans and stiffener requirements will need to be confirmed by a suitably qualified professional to suit the specific application.

By **HVG** façades

[hvgfacades.com.au](http://hvgfacades.com.au)

1300 881 712

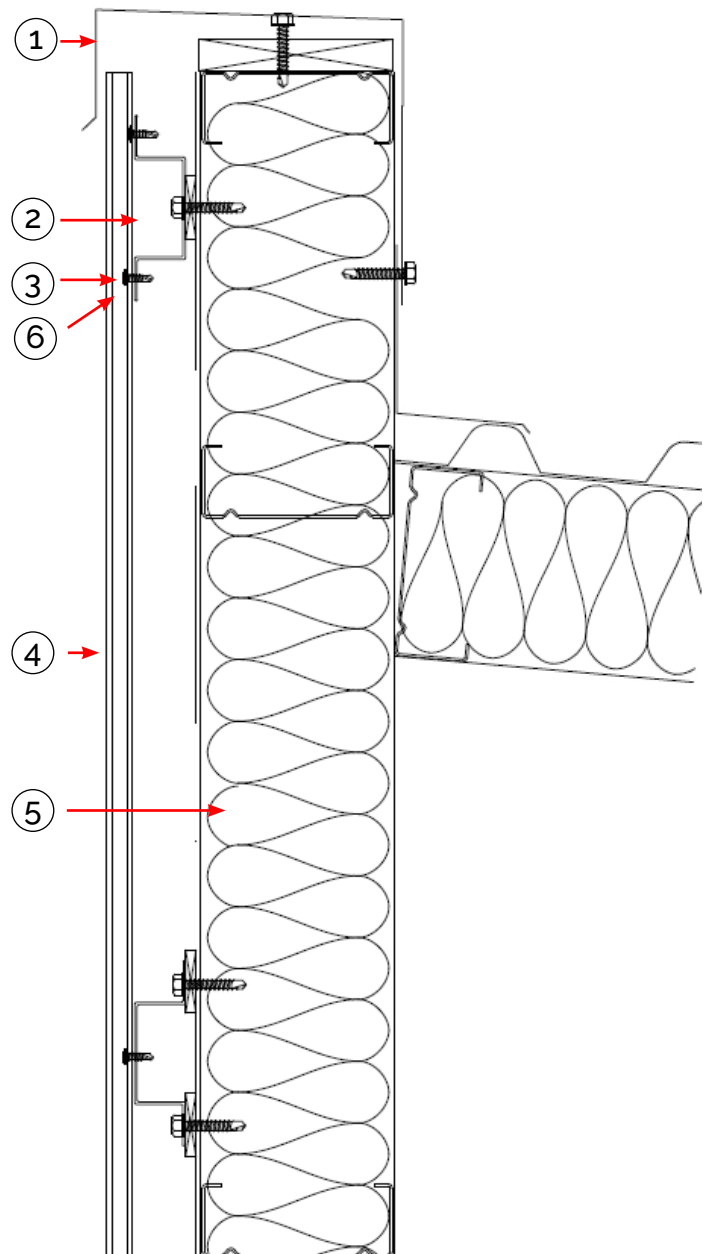
[info@hvgfacades.com.au](mailto:info@hvgfacades.com.au)

# ZINTL®

## LINEA VERTICAL FIXING DETAIL

### ROOF CAPPING DETAIL

- ① Roof Capping by Others
- ② GAL Top Hat
- ③ Universal Fixing Clip & Screw
- ④ ZINTL Board
- ⑤ Sisalation as per specification
- ⑥ EPDM Foam Strip (optional)



#### LINEA VERTICAL FIXING DETAIL

This information is generic in nature and supplied for guidance purposes only. Top Hat dimensions are nominal. Dimensions, spacing, spans and stiffener requirements will need to be confirmed by a suitably qualified professional to suit the specific application.

By **HVG** façades

[hvgfacades.com.au](http://hvgfacades.com.au)

1300 881 712

[info@hvgfacades.com.au](mailto:info@hvgfacades.com.au)



# ZINTL®

PREMIUM INTERLOCKING  
ALUMINIUM CLADDING SYSTEM

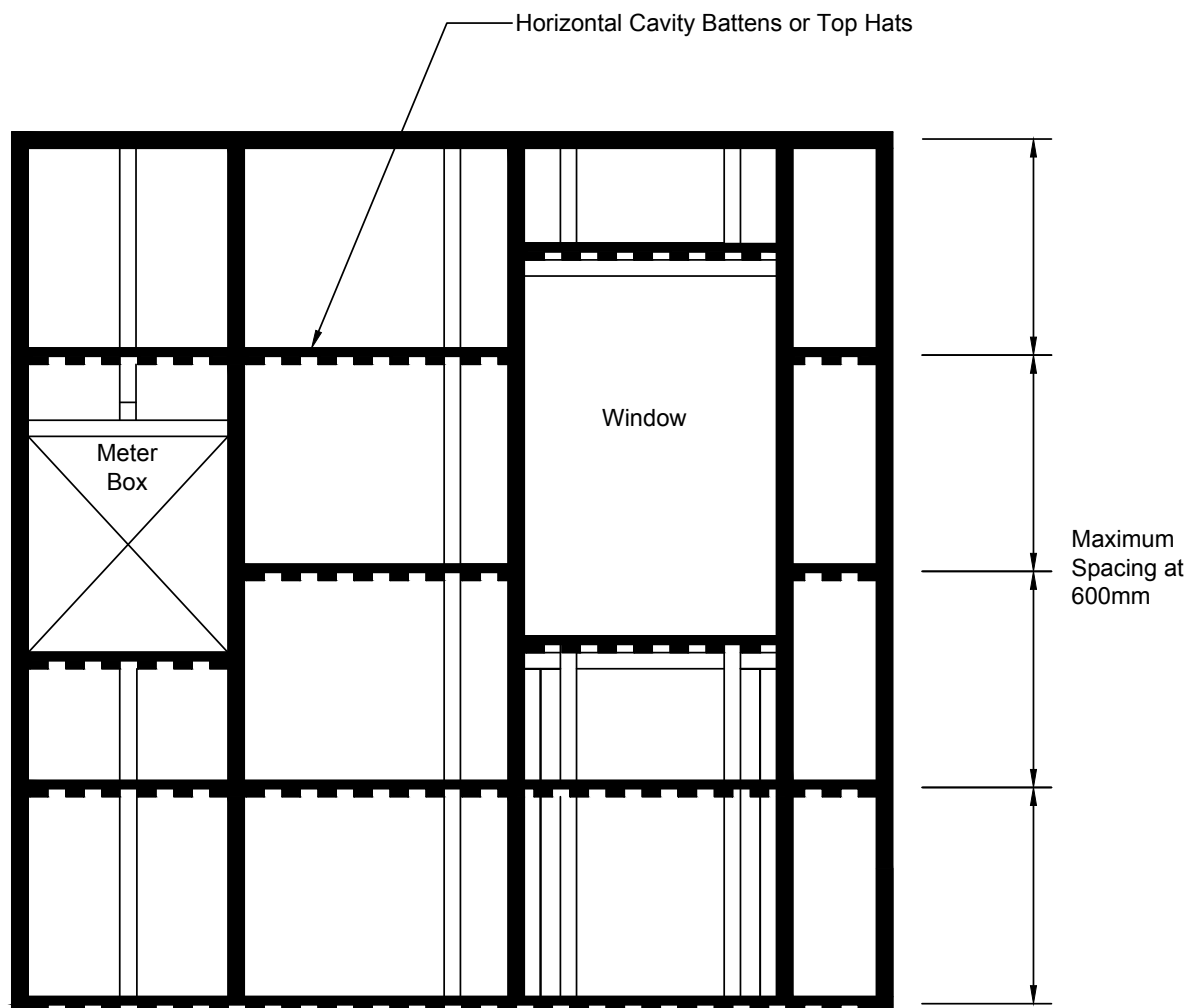
## SHADOW VERTICAL FIXING DETAILS



# ZINTL®

## SHADOW VERTICAL FIXING DETAIL

### VERTICAL CLADDING WALL LAYOUT



#### SHADOW VERTICAL FIXING DETAIL

This information is generic in nature and supplied for guidance purposes only. Top Hat dimensions are nominal. Dimensions, spacing, spans and stiffener requirements will need to be confirmed by a suitably qualified professional to suit the specific application.

By **HVG** façades

[hvgfacades.com.au](http://hvgfacades.com.au)

1300 881 712

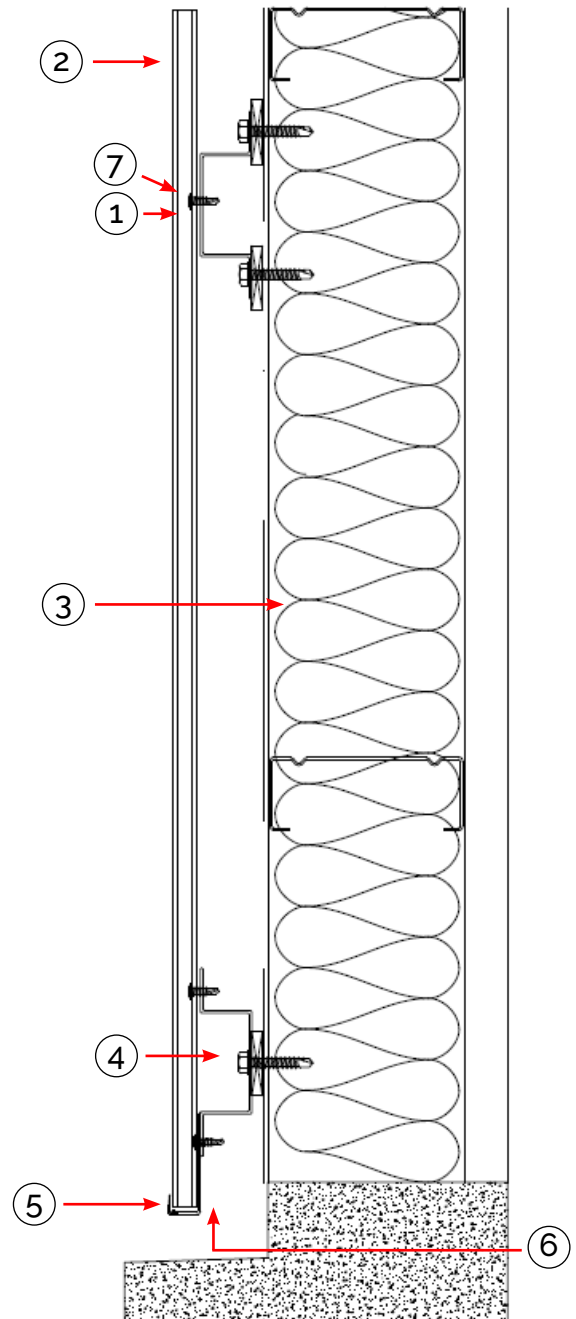
[info@hvgfacades.com.au](mailto:info@hvgfacades.com.au)

# ZINTL®

## SHADOW VERTICAL FIXING DETAIL

### BASE DETAIL

- ① Universal Fixing Clip and Screw
- ② ZINTL Board
- ③ Sisalation as per specification
- ④ GAL Top Hat
- ⑤ Base Channel
- ⑥ 15mm Dip Edge
- ⑦ EPDM Foam Strip (optional)



### SHADOW VERTICAL FIXING DETAIL

This information is generic in nature and supplied for guidance purposes only. Top Hat dimensions are nominal. Dimensions, spacing, spans and stiffener requirements will need to be confirmed by a suitably qualified professional to suit the specific application.

By **HVG** façades

[hvgfacades.com.au](http://hvgfacades.com.au)

1300 881 712

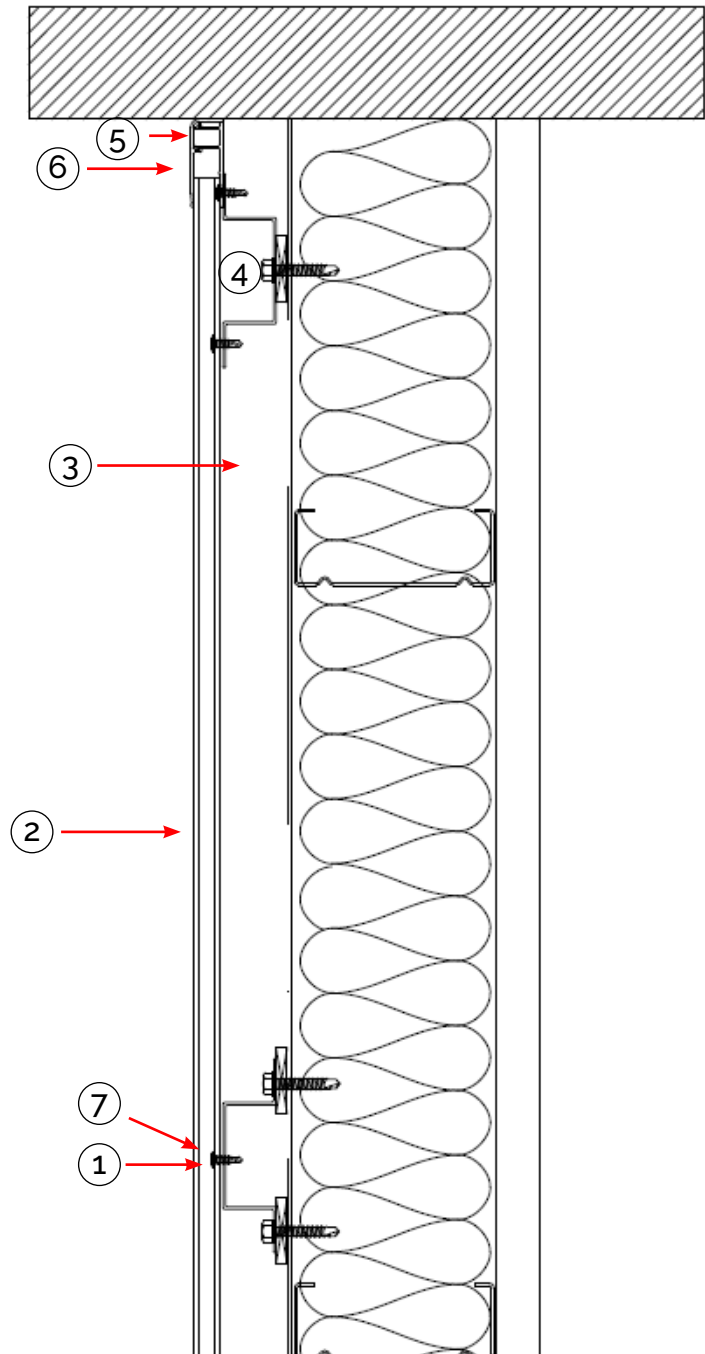
[info@hvgfacades.com.au](mailto:info@hvgfacades.com.au)

# ZINTL®

## SHADOW VERTICAL FIXING DETAIL

### SOFFIT DETAIL

- ① Universal Fixing Clip and Screw
- ② ZINTL Board
- ③ Sisalation as per specification
- ④ GAL Top Hat
- ⑤ Jamb Flashing Base
- ⑥ Jamb Flashing Cap
- ⑦ EPDM Foam Strip (optional)



#### SHADOW VERTICAL FIXING DETAIL

This information is generic in nature and supplied for guidance purposes only. Top Hat dimensions are nominal. Dimensions, spacing, spans and stiffener requirements will need to be confirmed by a suitably qualified professional to suit the specific application.

By **HVG** façades

[hvgfacades.com.au](http://hvgfacades.com.au)

1300 881 712

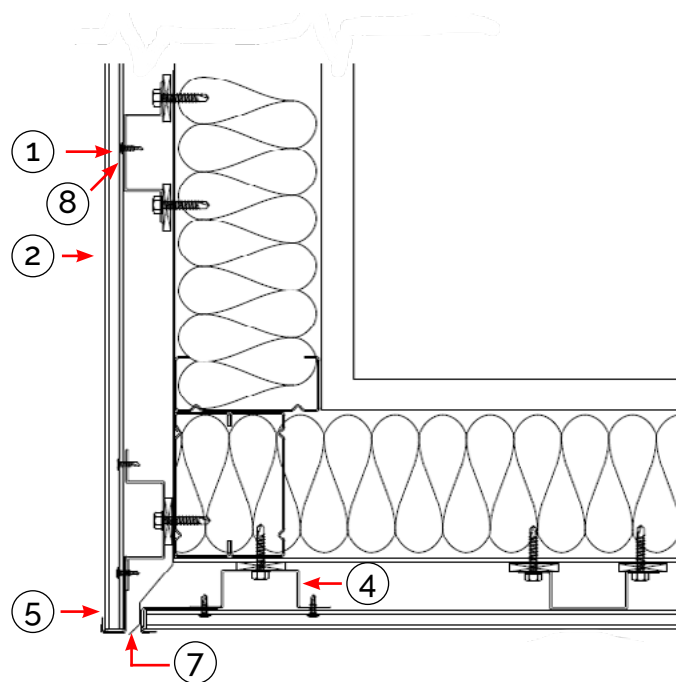
[info@hvgfacades.com.au](mailto:info@hvgfacades.com.au)

# ZINTL®

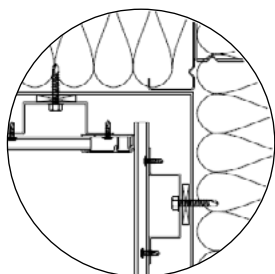
## SHADOW VERTICAL FIXING DETAIL

### WALL TO SOFFIT DETAIL

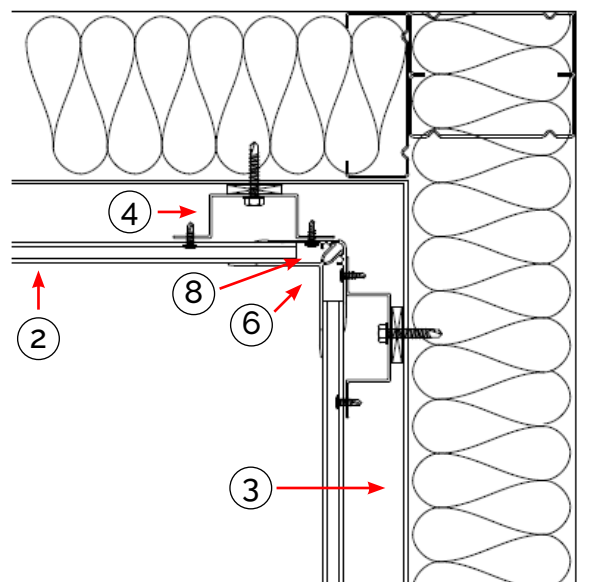
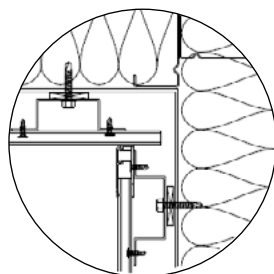
- ① Universal Fixing Clip and Screw
- ② ZINTL Board
- ③ Sisalation as per specification
- ④ GAL Top Hat
- ⑤ Base Channel
- ⑥ Female and Male Corner
- ⑦ Flashing by others
- ⑧ EPDM Foam Strip (optional)



OPTIONAL



OPTIONAL



#### SHADOW VERTICAL FIXING DETAIL

This information is generic in nature and supplied for guidance purposes only. Top Hat dimensions are nominal. Dimensions, spacing, spans and stiffener requirements will need to be confirmed by a suitably qualified professional to suit the specific application.

By **HVG** façades

[hvgfacades.com.au](http://hvgfacades.com.au)

1300 881 712

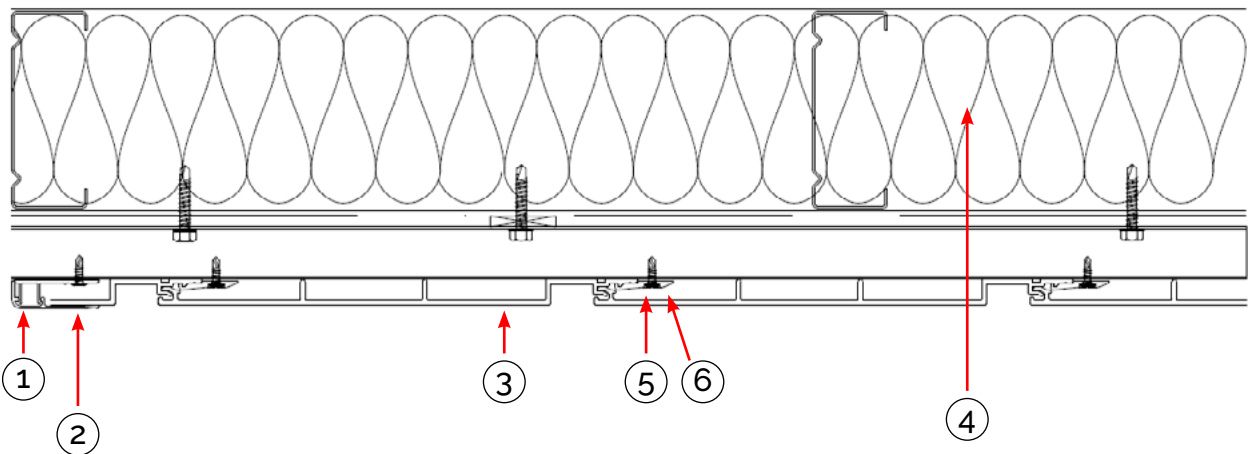
[info@hvgfacades.com.au](mailto:info@hvgfacades.com.au)

# ZINTL®

## SHADOW VERTICAL FIXING DETAIL

### END FINISH DETAIL

- ① Jamb Flashing Cap
- ② Jamb Flashing Base
- ③ ZINTL Board
- ④ Sisalation as per specification
- ⑤ Universal fixing clip and screw
- ⑥ EPDM Foam Strip (optional)



#### SHADOW VERTICAL FIXING DETAIL

This information is generic in nature and supplied for guidance purposes only. Top Hat dimensions are nominal. Dimensions, spacing, spans and stiffener requirements will need to be confirmed by a suitably qualified professional to suit the specific application.

By **HVG** façades

[hvgfacades.com.au](http://hvgfacades.com.au)

1300 881 712

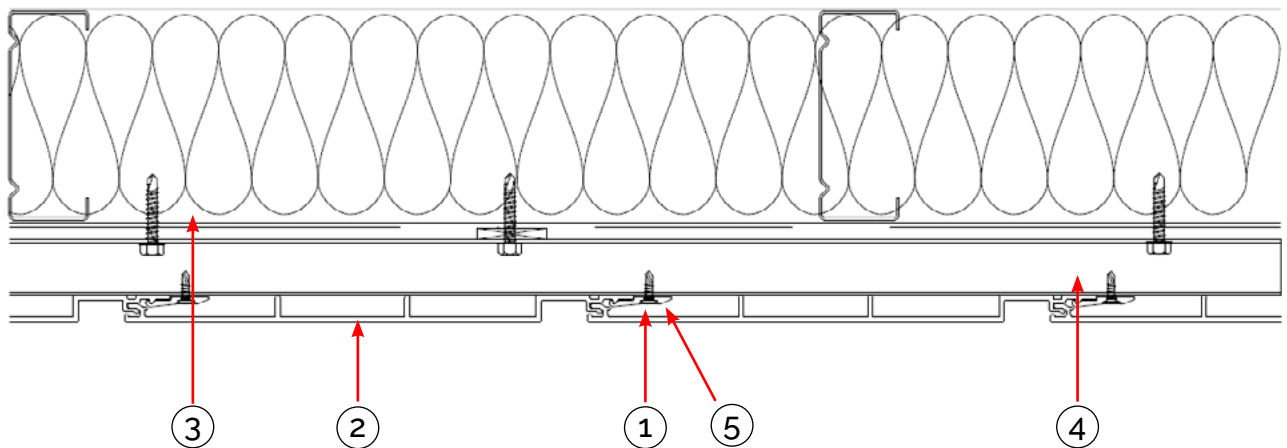
[info@hvgfacades.com.au](mailto:info@hvgfacades.com.au)

# ZINTL®

## SHADOW VERTICAL FIXING DETAIL

### GENERAL CONNECTION DETAIL

- ① Universal Fixing Clip and Screw
- ② ZINTL Board
- ③ Sisalation as per specification
- ④ GAL Top Hat
- ⑤ EPDM Foam Strip (optional)



#### SHADOW VERTICAL FIXING DETAIL

This information is generic in nature and supplied for guidance purposes only. Top Hat dimensions are nominal. Dimensions, spacing, spans and stiffener requirements will need to be confirmed by a suitably qualified professional to suit the specific application.

By **HVG** façades

[hvgfacades.com.au](http://hvgfacades.com.au)

1300 881 712

[info@hvgfacades.com.au](mailto:info@hvgfacades.com.au)

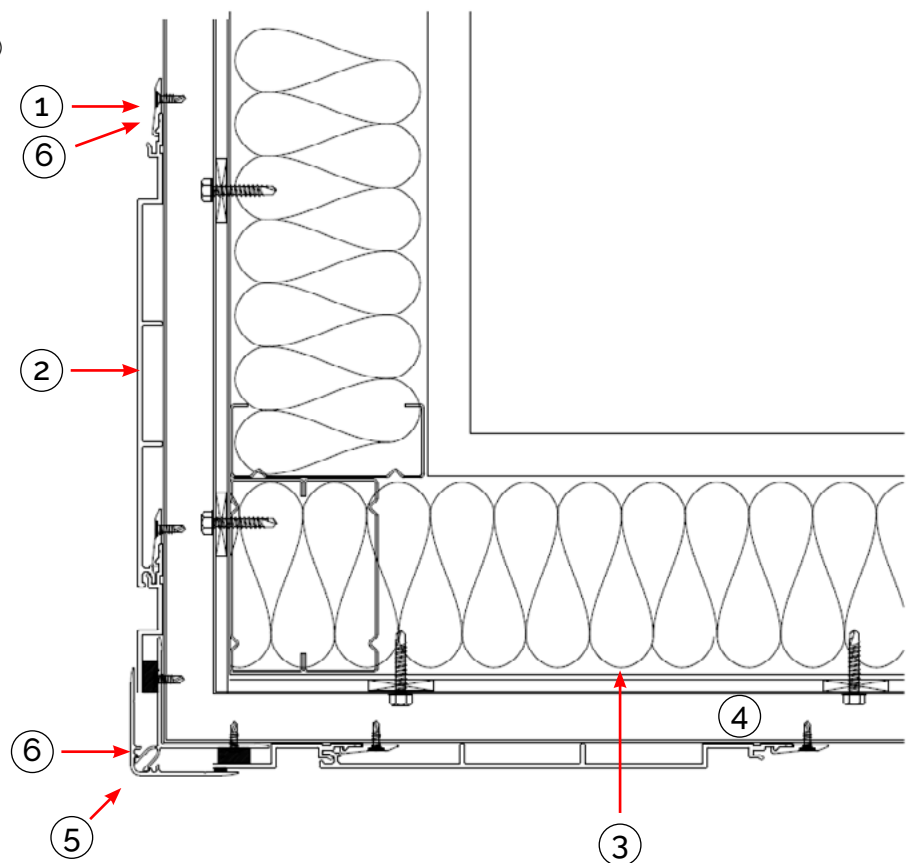


# ZINTL®

## SHADOW VERTICAL FIXING DETAIL

### EXTERNAL CORNER DETAIL

- ① Universal Fixing Clip and Screw
- ② ZINTL Board
- ③ Sisalation as per specification
- ④ GAL Top Hat
- ⑤ Female and Male Corner
- ⑥ EPDM Foam Strip (optional)



#### SHADOW VERTICAL FIXING DETAIL

This information is generic in nature and supplied for guidance purposes only. Top Hat dimensions are nominal. Dimensions, spacing, spans and stiffener requirements will need to be confirmed by a suitably qualified professional to suit the specific application.

By **HVG** façades

[hvgfacades.com.au](http://hvgfacades.com.au)

1300 881 712

[info@hvgfacades.com.au](mailto:info@hvgfacades.com.au)

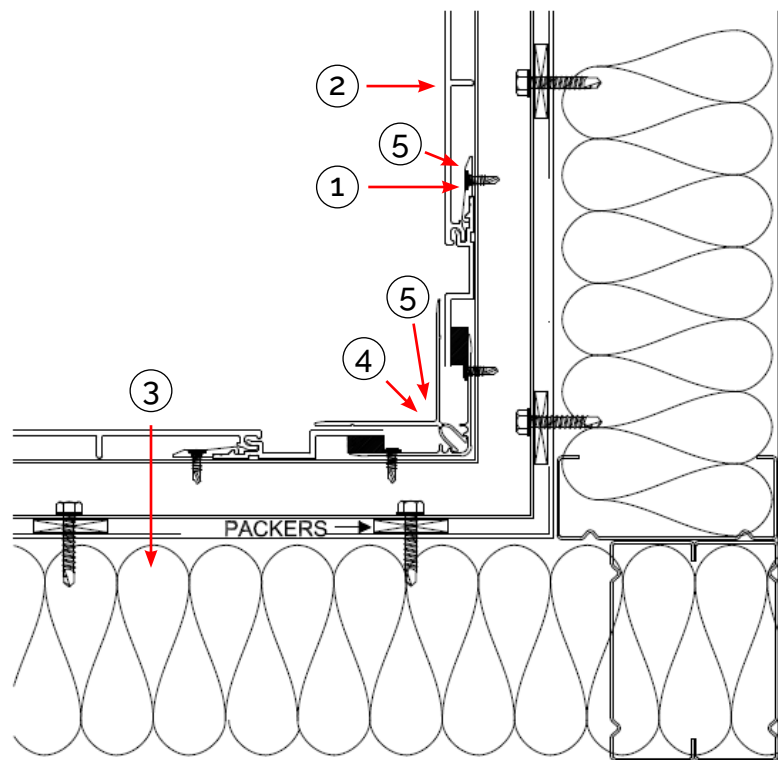


# ZINTL®

## SHADOW VERTICAL FIXING DETAIL

### INTERNAL CORNER DETAIL

- ① Universal Fixing Clip and Screw
- ② ZINTL Board
- ③ Sisalation as per specification
- ④ Female and Male Corner
- ⑤ EPDM Foam Strip (optional)



#### SHADOW VERTICAL FIXING DETAIL

This information is generic in nature and supplied for guidance purposes only. Top Hat dimensions are nominal. Dimensions, spacing, spans and stiffener requirements will need to be confirmed by a suitably qualified professional to suit the specific application.

By **HVG** façades

[hvgfacades.com.au](http://hvgfacades.com.au)

1300 881 712

[info@hvgfacades.com.au](mailto:info@hvgfacades.com.au)

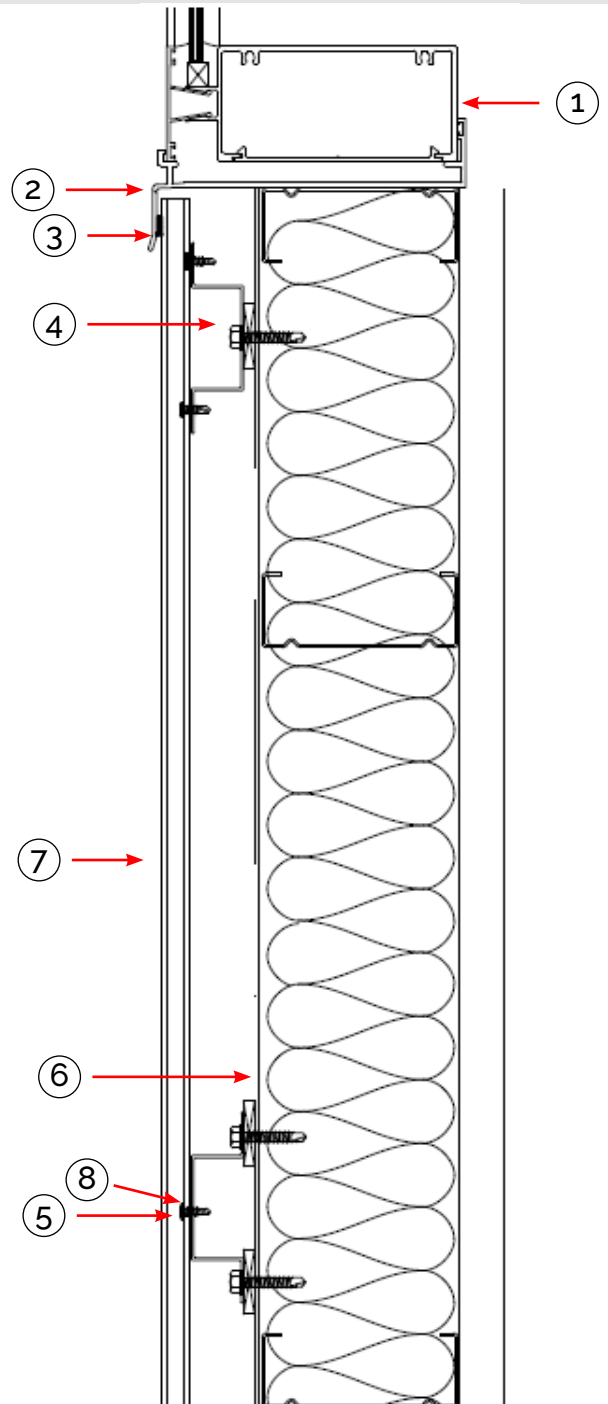
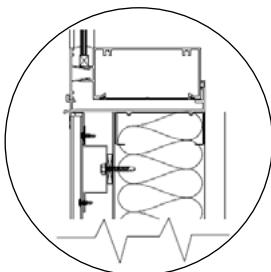
# ZINTL®

## SHADOW VERTICAL FIXING DETAIL

### WINDOW SILL DETAIL

- ① Window Subframe
- ② Window Sill
- ③ EPDM Foam Tape/Caulking
- ④ GAL Top Hat
- ⑤ Universal Fixing Clip and Screw
- ⑥ Sisalation as per specification
- ⑦ ZINTL Board
- ⑧ EPDM Foam Strip (optional)

#### OPTIONAL



#### SHADOW VERTICAL FIXING DETAIL

This information is generic in nature and supplied for guidance purposes only. Top Hat dimensions are nominal. Dimensions, spacing, spans and stiffener requirements will need to be confirmed by a suitably qualified professional to suit the specific application.

By **HVG** façades

[hvgfacades.com.au](http://hvgfacades.com.au)

1300 881 712

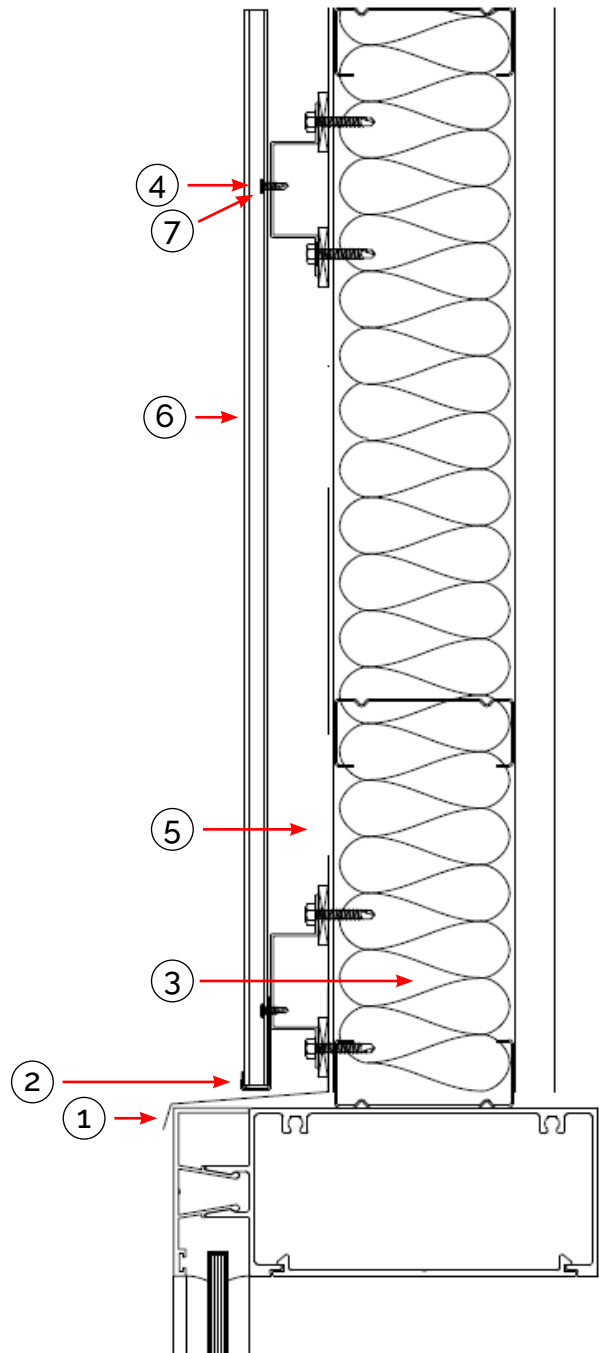
[info@hvgfacades.com.au](mailto:info@hvgfacades.com.au)

# ZINTL®

## SHADOW VERTICAL FIXING DETAIL

### WINDOW HEAD DETAIL

- ① Flashing by Others
- ② Base Channel
- ③ GAL Top Hat
- ④ Universal Fixing Clip and Screw
- ⑤ Sisalation as per specification
- ⑥ ZINTL Board
- ⑦ EPDM Foam Strip (optional)



#### SHADOW VERTICAL FIXING DETAIL

This information is generic in nature and supplied for guidance purposes only. Top Hat dimensions are nominal. Dimensions, spacing, spans and stiffener requirements will need to be confirmed by a suitably qualified professional to suit the specific application.

By **HVG** façades

[hvgfacades.com.au](http://hvgfacades.com.au)

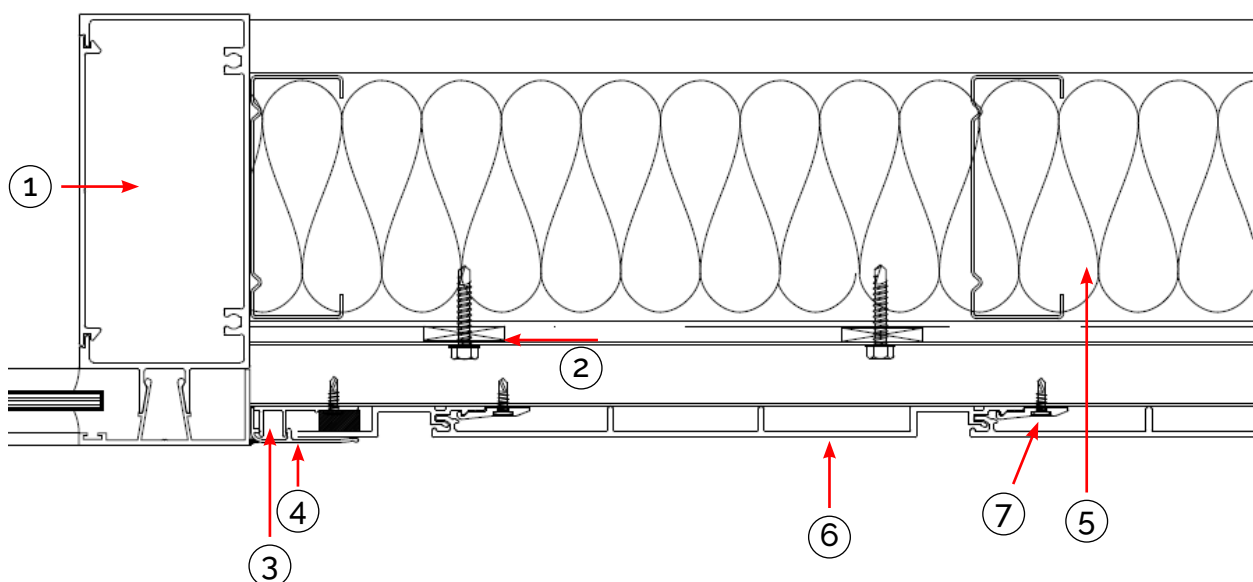
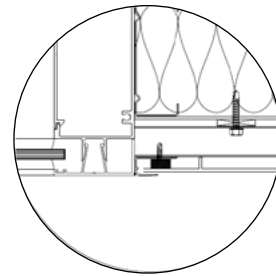
1300 881 712

[info@hvgfacades.com.au](mailto:info@hvgfacades.com.au)

### WINDOW JAMB DETAIL

- ① Window Subframe
- ② Packers
- ③ JAMB Flashing Base
- ④ JAMB Flashing Cap
- ⑤ Sisalation as per specification
- ⑥ ZINTL Board
- ⑦ EPDM Foam Strip (optional)

OPTIONAL



#### SHADOW VERTICAL FIXING DETAIL

This information is generic in nature and supplied for guidance purposes only. Top Hat dimensions are nominal. Dimensions, spacing, spans and stiffener requirements will need to be confirmed by a suitably qualified professional to suit the specific application.

By **HVG** façades

[hvgfacades.com.au](http://hvgfacades.com.au)

1300 881 712

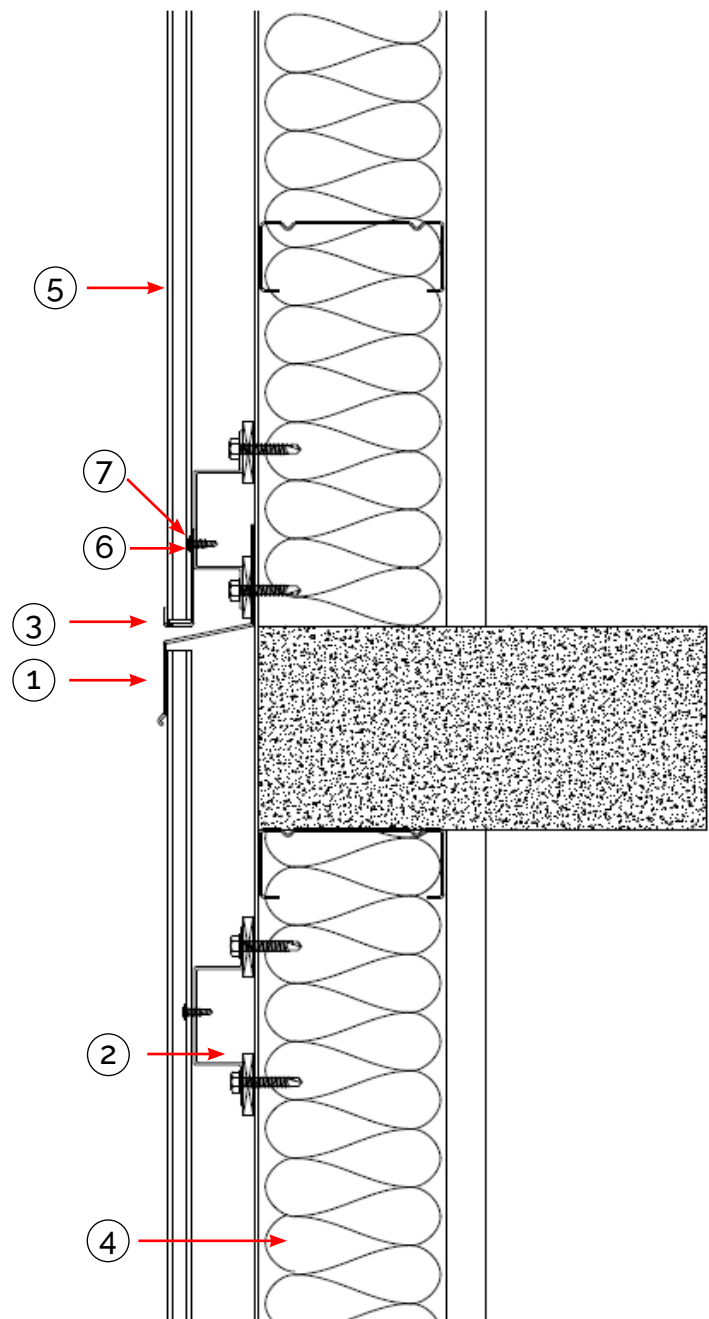
[info@hvgfacades.com.au](mailto:info@hvgfacades.com.au)

# ZINTL®

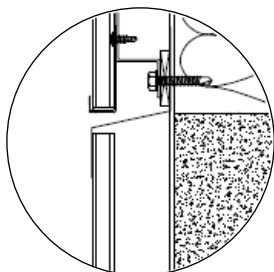
## SHADOW VERTICAL FIXING DETAIL

### INTERSTOREY JOINT

- ① Interstorey Joint
- ② GAL Top Hat
- ③ Base Channel
- ④ Sisalation as per specification
- ⑤ ZINTL Board
- ⑥ Universal Fixing Clip and Screw
- ⑦ EPDM Foam Strip (optional)



OPTIONAL



#### SHADOW VERTICAL FIXING DETAIL

This information is generic in nature and supplied for guidance purposes only. Top Hat dimensions are nominal. Dimensions, spacing, spans and stiffener requirements will need to be confirmed by a suitably qualified professional to suit the specific application.

By **HVG** façades

[hvgfacades.com.au](http://hvgfacades.com.au)

1300 881 712

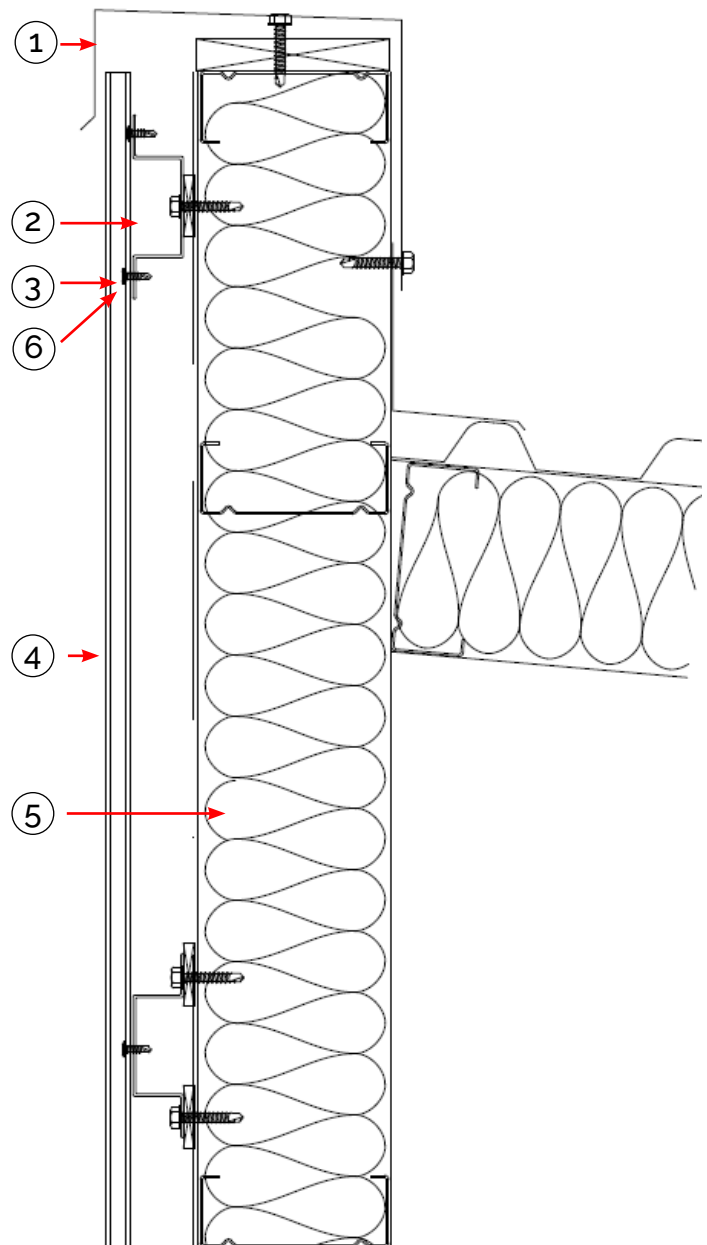
[info@hvgfacades.com.au](mailto:info@hvgfacades.com.au)

# ZINTL®

## SHADOW VERTICAL FIXING DETAIL

### ROOF CAPPING DETAIL

- ① Roof Capping by Others
- ② GAL Top Hat
- ③ Universal Fixing Clip & Screw
- ④ ZINTL Board
- ⑤ Sisalation as per specification
- ⑥ EPDM Foam Strip (optional)



#### SHADOW VERTICAL FIXING DETAIL

This information is generic in nature and supplied for guidance purposes only. Top Hat dimensions are nominal. Dimensions, spacing, spans and stiffener requirements will need to be confirmed by a suitably qualified professional to suit the specific application.

By **HVG** façades

[hvgfacades.com.au](http://hvgfacades.com.au)

1300 881 712

[info@hvgfacades.com.au](mailto:info@hvgfacades.com.au)

# ZINTL®

PREMIUM INTERLOCKING  
ALUMINIUM CLADDING SYSTEM

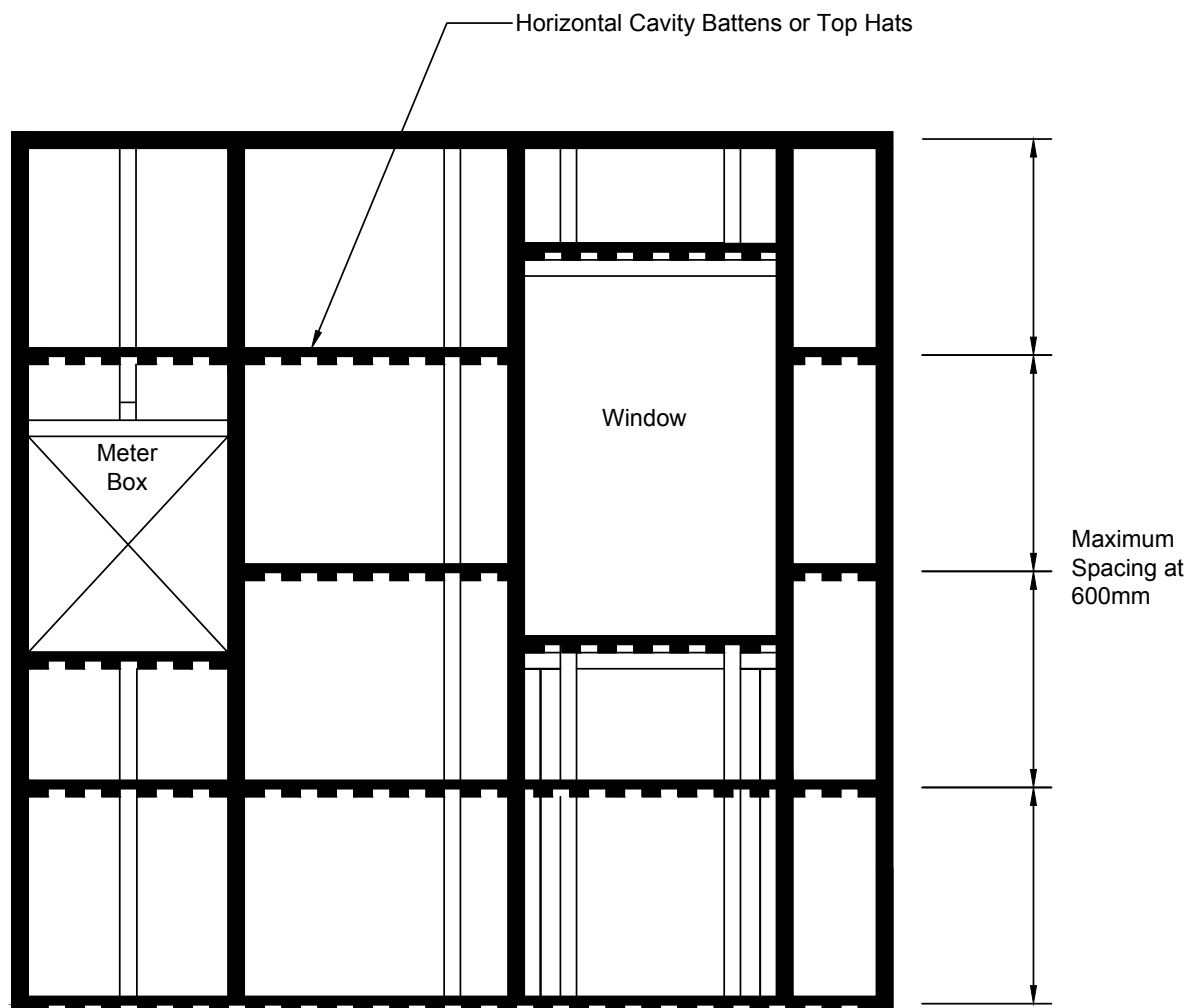
SHIPLAP  
VERTICAL FIXING DETAILS



# ZINTL<sup>®</sup>

## SHIPLAP VERTICAL FIXING DETAIL

### VERTICAL CLADDING WALL LAYOUT



#### SHIPLAP VERTICAL FIXING DETAIL

This information is generic in nature and supplied for guidance purposes only. Top Hat dimensions are nominal. Dimensions, spacing, spans and stiffener requirements will need to be confirmed by a suitably qualified professional to suit the specific application.

By **HVG** façades

[hvgfacades.com.au](http://hvgfacades.com.au)

1300 881 712

[info@hvgfacades.com.au](mailto:info@hvgfacades.com.au)

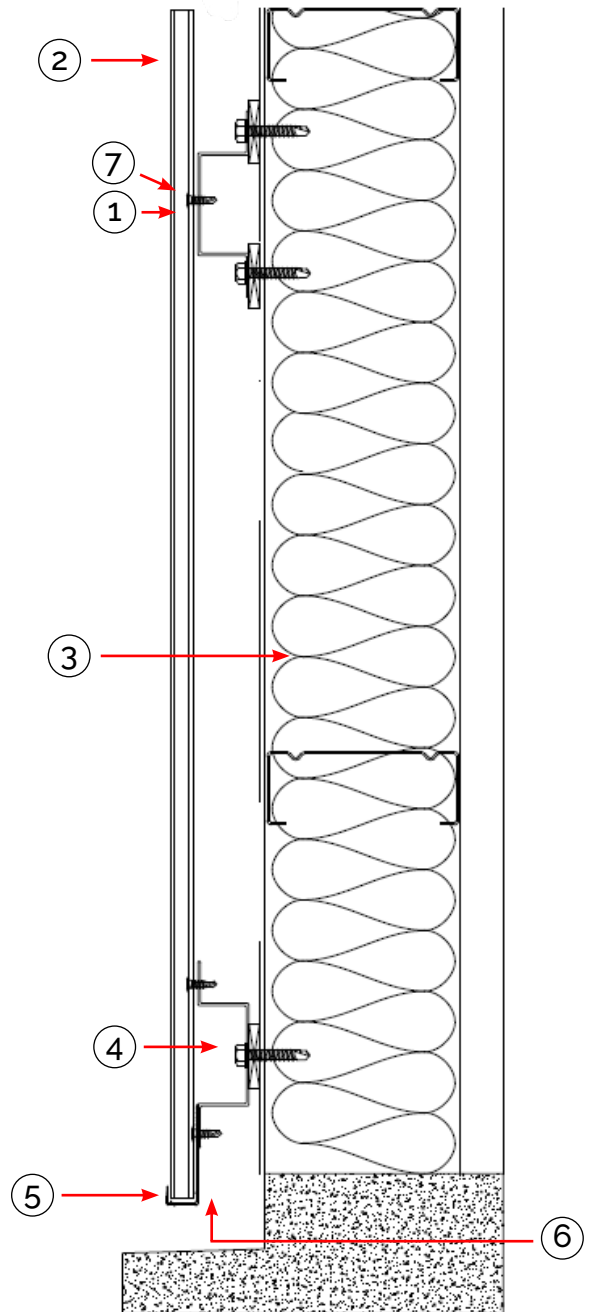


# ZINTL®

## SHIPLAP VERTICAL FIXING DETAIL

### BASE DETAIL

- ① Universal Fixing Clip and Screw
- ② ZINTL Board
- ③ Sisalation as per specification
- ④ GAL Top Hat
- ⑤ Base Channel
- ⑥ 15mm Dip Edge
- ⑦ EPDM Foam Strip (optional)



### SHIPLAP VERTICAL FIXING DETAIL

This information is generic in nature and supplied for guidance purposes only. Top Hat dimensions are nominal. Dimensions, spacing, spans and stiffener requirements will need to be confirmed by a suitably qualified professional to suit the specific application.

By **HVG** façades

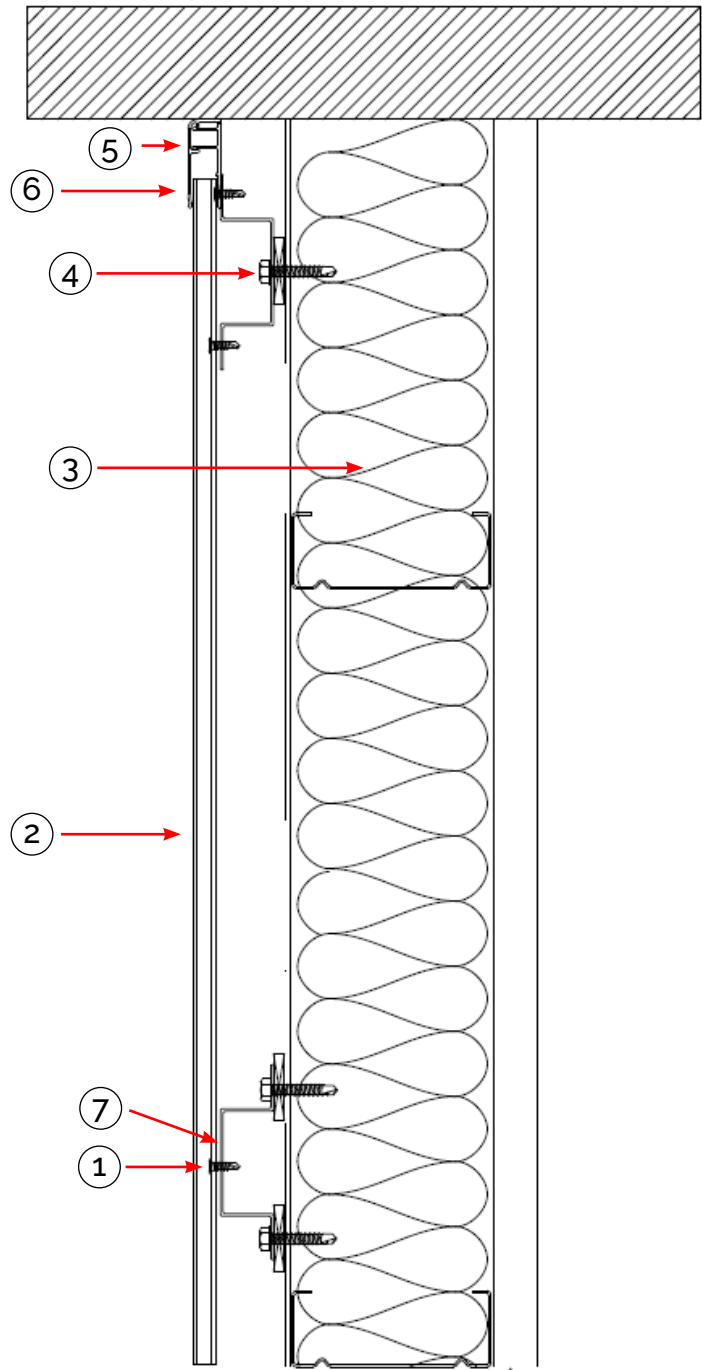
[hvgfacades.com.au](http://hvgfacades.com.au)

1300 881 712

[info@hvgfacades.com.au](mailto:info@hvgfacades.com.au)

### SOFFIT DETAIL

- ① Universal Fixing Clip and Screw
- ② ZINTL Board
- ③ Sisalation as per specification
- ④ GAL Top Hat
- ⑤ Jamb Flashing Base
- ⑥ Jamb Flashing Cap
- ⑦ EPDM Foam Strip (optional)



### SHIPLAP VERTICAL FIXING DETAIL

This information is generic in nature and supplied for guidance purposes only. Top Hat dimensions are nominal. Dimensions, spacing, spans and stiffener requirements will need to be confirmed by a suitably qualified professional to suit the specific application.

By **HVG** façades

[hvgfacades.com.au](http://hvgfacades.com.au)

1300 881 712

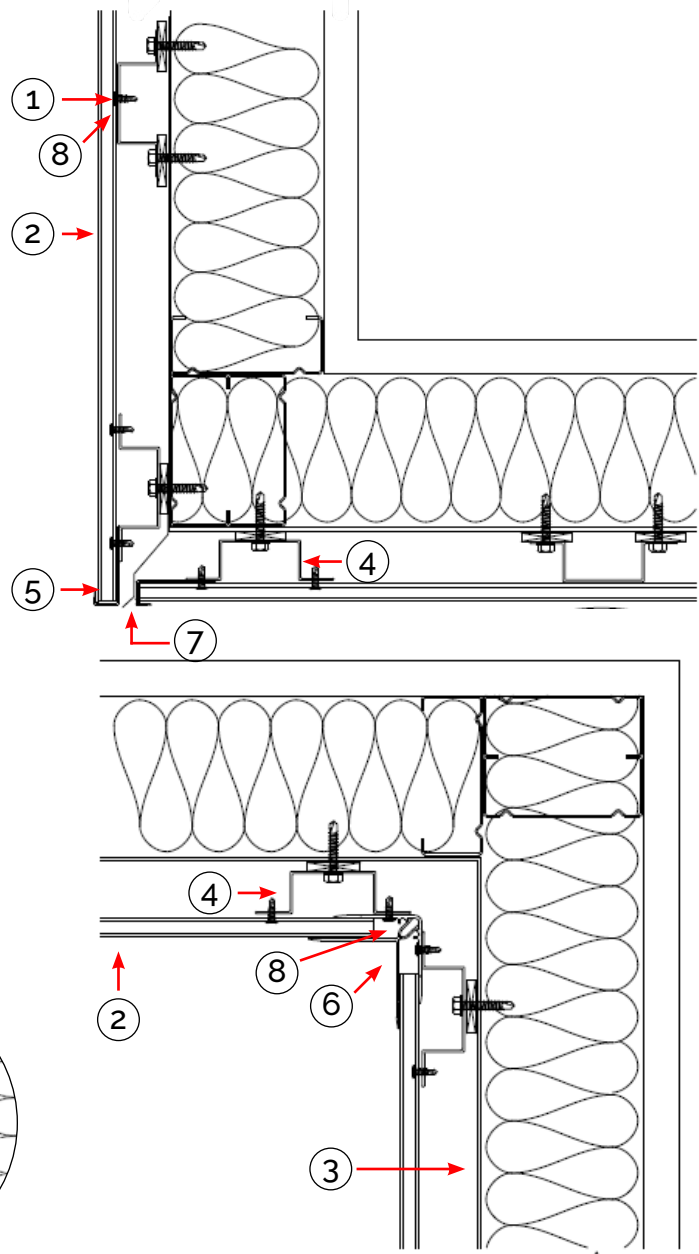
[info@hvgfacades.com.au](mailto:info@hvgfacades.com.au)

# ZINTL®

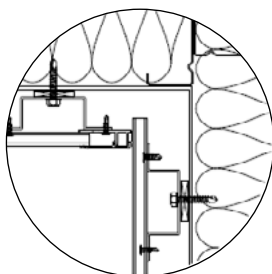
## SHIPLAP VERTICAL FIXING DETAIL

### WALL TO SOFFIT DETAIL

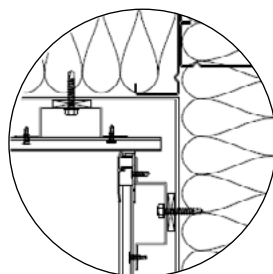
- ① Universal Fixing Clip and Screw
- ② ZINTL Board
- ③ Sisalation as per specification
- ④ GAL Top Hat
- ⑤ Base Channel
- ⑥ Female and Male Corner
- ⑦ Flashing by others
- ⑧ EPDM Foam Strip (optional)



OPTIONAL



OPTIONAL



#### SHIPLAP VERTICAL FIXING DETAIL

This information is generic in nature and supplied for guidance purposes only. Top Hat dimensions are nominal. Dimensions, spacing, spans and stiffener requirements will need to be confirmed by a suitably qualified professional to suit the specific application.

By **HVG** façades

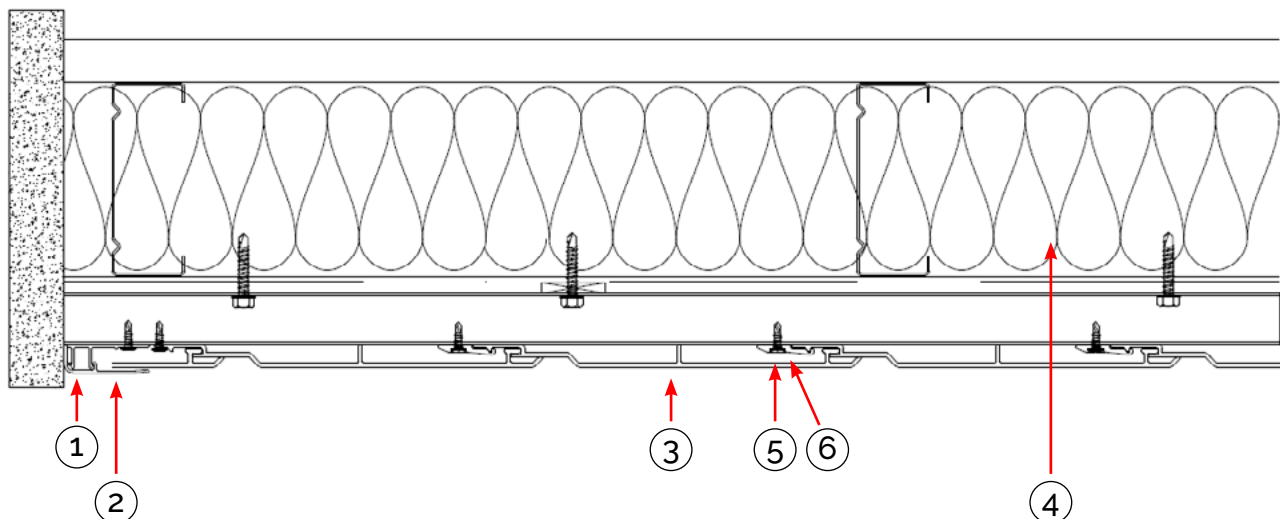
[hvgfacades.com.au](http://hvgfacades.com.au)

1300 881 712

[info@hvgfacades.com.au](mailto:info@hvgfacades.com.au)

### END FINISH DETAIL

- ① Jamb Flashing Cap
- ② Jamb Flashing Base
- ③ ZINTL Board
- ④ Sisalation as per specification
- ⑤ Universal fixing clip and screw
- ⑥ EPDM Foam Strip (optional)



#### SHIPLAP VERTICAL FIXING DETAIL

This information is generic in nature and supplied for guidance purposes only. Top Hat dimensions are nominal. Dimensions, spacing, spans and stiffener requirements will need to be confirmed by a suitably qualified professional to suit the specific application.

By **HVG** façades

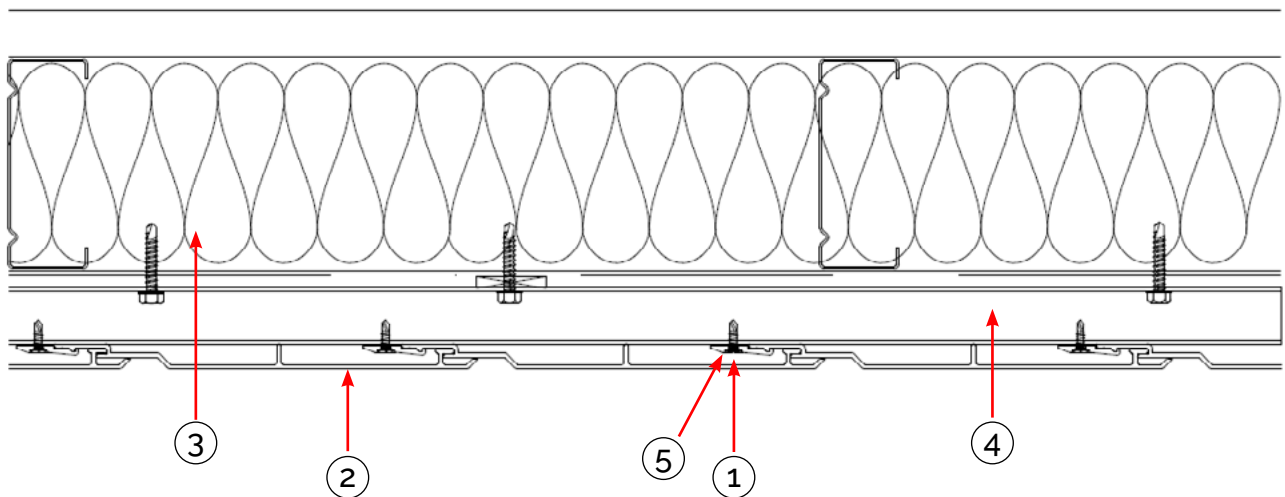
[hvgfacades.com.au](http://hvgfacades.com.au)

1300 881 712

[info@hvgfacades.com.au](mailto:info@hvgfacades.com.au)

### GENERAL CONNECTION DETAIL

- ① Universal Fixing Clip and Screw
- ② ZINTL Board
- ③ Sisalation as per specification
- ④ GAL Top Hat
- ⑤ EPDM Foam Strip (optional)



#### SHIPLAP VERTICAL FIXING DETAIL

This information is generic in nature and supplied for guidance purposes only. Top Hat dimensions are nominal. Dimensions, spacing, spans and stiffener requirements will need to be confirmed by a suitably qualified professional to suit the specific application.

By **HVG** façades

[hvgfacades.com.au](http://hvgfacades.com.au)

1300 881 712

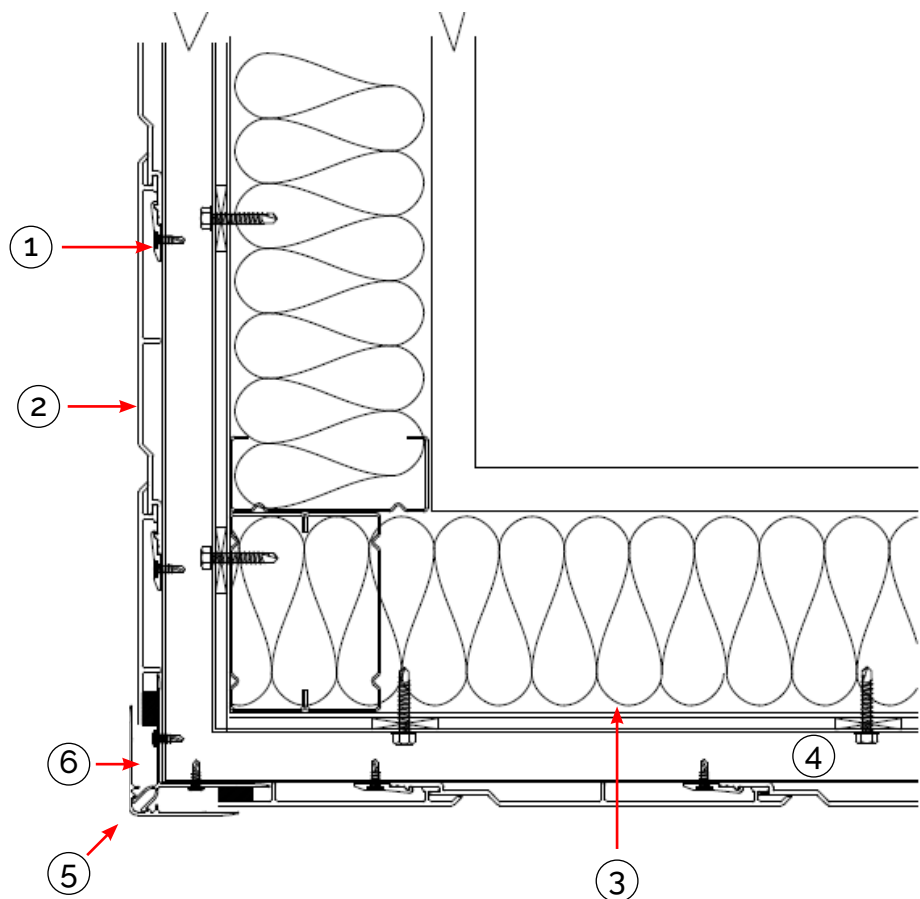
[info@hvgfacades.com.au](mailto:info@hvgfacades.com.au)

# ZINTL®

## SHIPLAP VERTICAL FIXING DETAIL

### EXTERNAL CORNER DETAIL

- ① Universal Fixing Clip and Screw
- ② ZINTL Board
- ③ Sisalation as per specification
- ④ GAL Top Hat
- ⑤ Female and Male Corner
- ⑥ EPDM Foam Strip (optional)



#### SHIPLAP VERTICAL FIXING DETAIL

This information is generic in nature and supplied for guidance purposes only. Top Hat dimensions are nominal. Dimensions, spacing, spans and stiffener requirements will need to be confirmed by a suitably qualified professional to suit the specific application.

By **HVG** façades

[hvgfacades.com.au](http://hvgfacades.com.au)

1300 881 712

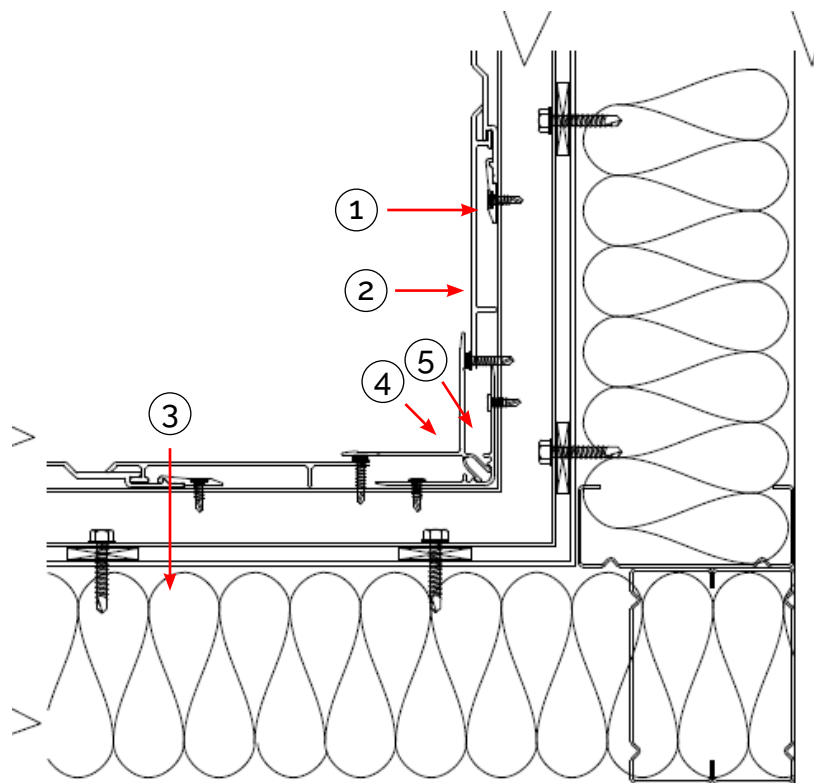
[info@hvgfacades.com.au](mailto:info@hvgfacades.com.au)

# ZINTL®

## SHIPLAP VERTICAL FIXING DETAIL

### INTERNAL CORNER DETAIL

- ① Universal Fixing Clip and Screw
- ② ZINTL Board
- ③ Sisalation as per specification
- ④ Female and Male Corner
- ⑤ EPDM Foam Strip (optional)



#### SHIPLAP VERTICAL FIXING DETAIL

This information is generic in nature and supplied for guidance purposes only. Top Hat dimensions are nominal. Dimensions, spacing, spans and stiffener requirements will need to be confirmed by a suitably qualified professional to suit the specific application.

By **HVG** façades

[hvgfacades.com.au](http://hvgfacades.com.au)

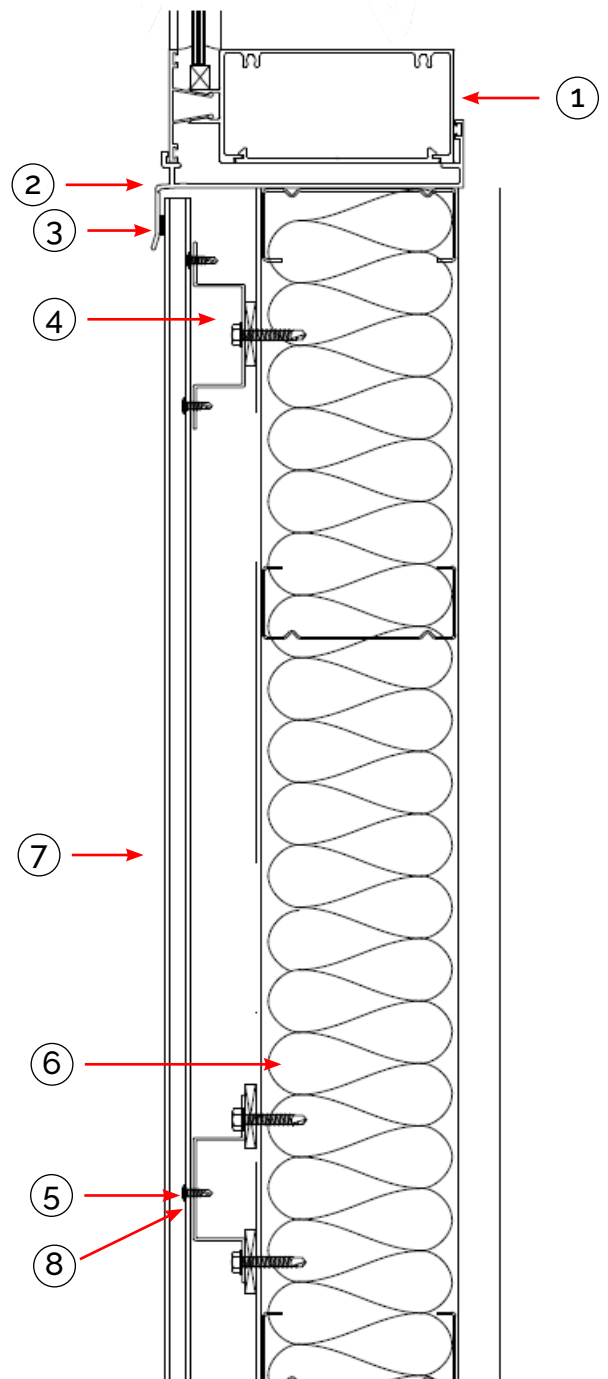
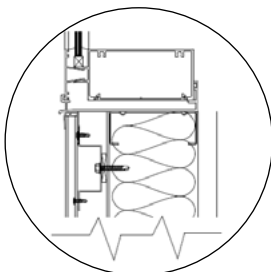
1300 881 712

[info@hvgfacades.com.au](mailto:info@hvgfacades.com.au)

### WINDOW SILL DETAIL

- ① Window Subframe
- ② Window Sill
- ③ EPDM Foam Tape/Caulking
- ④ GAL Top Hat
- ⑤ Universal Fixing Clip and Screw
- ⑥ Sisalation as per specification
- ⑦ ZINTL Board
- ⑧ EPDM Foam Strip (optional)

#### OPTIONAL



#### SHIPLAP VERTICAL FIXING DETAIL

This information is generic in nature and supplied for guidance purposes only. Top Hat dimensions are nominal. Dimensions, spacing, spans and stiffener requirements will need to be confirmed by a suitably qualified professional to suit the specific application.

By **HVG** façades

[hvgfacades.com.au](http://hvgfacades.com.au)

1300 881 712

[info@hvgfacades.com.au](mailto:info@hvgfacades.com.au)

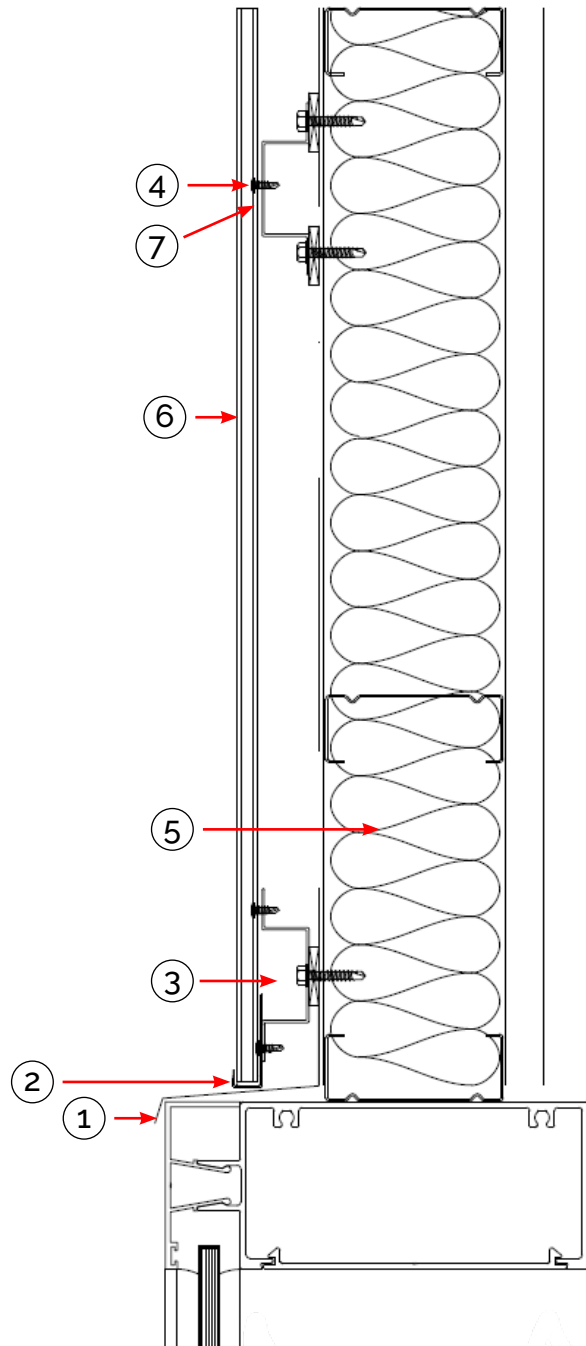


# ZINTL®

## SHIPLAP VERTICAL FIXING DETAIL

### WINDOW HEAD DETAIL

- ① Flashing by Others
- ② Base Channel
- ③ GAL Top Hat
- ④ Universal Fixing Clip and Screw
- ⑤ Sisalation as per specification
- ⑥ ZINTL Board
- ⑦ EPDM Foam Strip (optional)



#### SHIPLAP VERTICAL FIXING DETAIL

This information is generic in nature and supplied for guidance purposes only. Top Hat dimensions are nominal. Dimensions, spacing, spans and stiffener requirements will need to be confirmed by a suitably qualified professional to suit the specific application.

By **HVG** façades

[hvgfacades.com.au](http://hvgfacades.com.au)

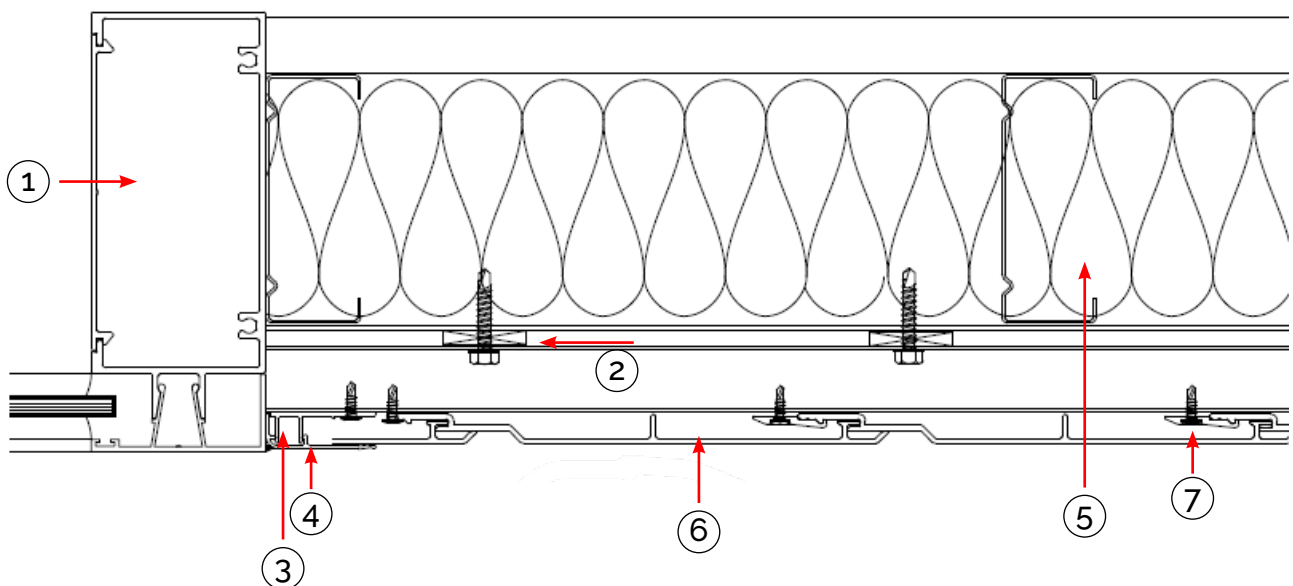
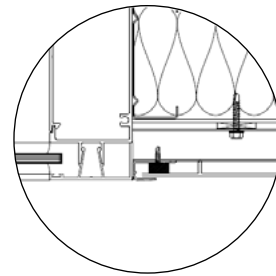
1300 881 712

[info@hvgfacades.com.au](mailto:info@hvgfacades.com.au)

### WINDOW JAMB DETAIL

- ① Window Subframe
- ② Packers
- ③ JAMB Flashing Base
- ④ JAMB Flashing Cap
- ⑤ Sisalation as per specification
- ⑥ ZINTL Board
- ⑦ EPDM Foam Strip (optional)

OPTIONAL



#### SHIPLAP VERTICAL FIXING DETAIL

This information is generic in nature and supplied for guidance purposes only. Top Hat dimensions are nominal. Dimensions, spacing, spans and stiffener requirements will need to be confirmed by a suitably qualified professional to suit the specific application.

By **HVG** façades

[hvghacades.com.au](http://hvghacades.com.au)

1300 881 712

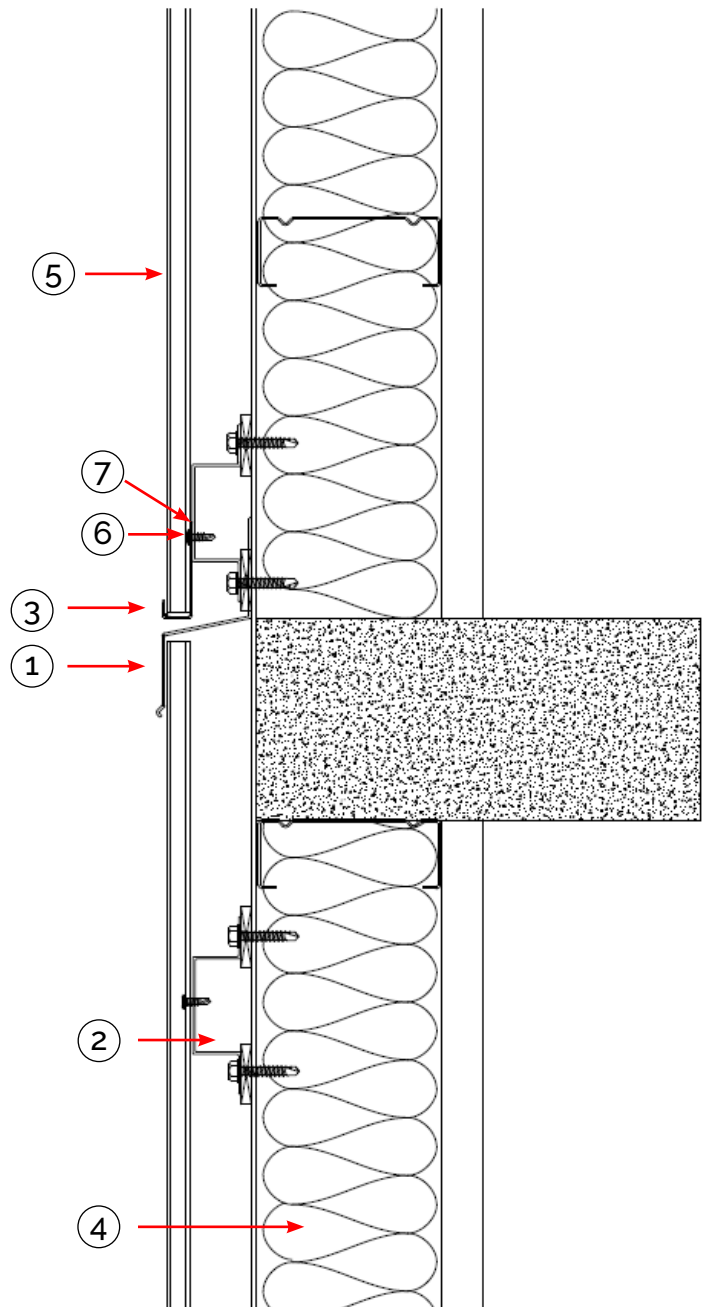
[info@hvghacades.com.au](mailto:info@hvghacades.com.au)

# ZINTL®

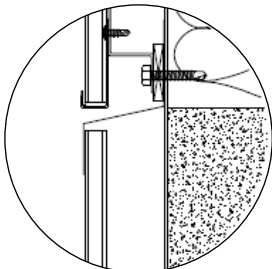
## SHIPLAP VERTICAL FIXING DETAIL

### INTERSTOREY JOINT

- ① Interstorey Joint
- ② GAL Top Hat
- ③ Base Channel
- ④ Sisalation as per specification
- ⑤ ZINTL Board
- ⑥ Universal Fixing Clip and Screw
- ⑦ EPDM Foam Strip (optional)



OPTIONAL



#### SHIPLAP VERTICAL FIXING DETAIL

This information is generic in nature and supplied for guidance purposes only. Top Hat dimensions are nominal. Dimensions, spacing, spans and stiffener requirements will need to be confirmed by a suitably qualified professional to suit the specific application.

By **HVG** façades

[hvgfacades.com.au](http://hvgfacades.com.au)

1300 881 712

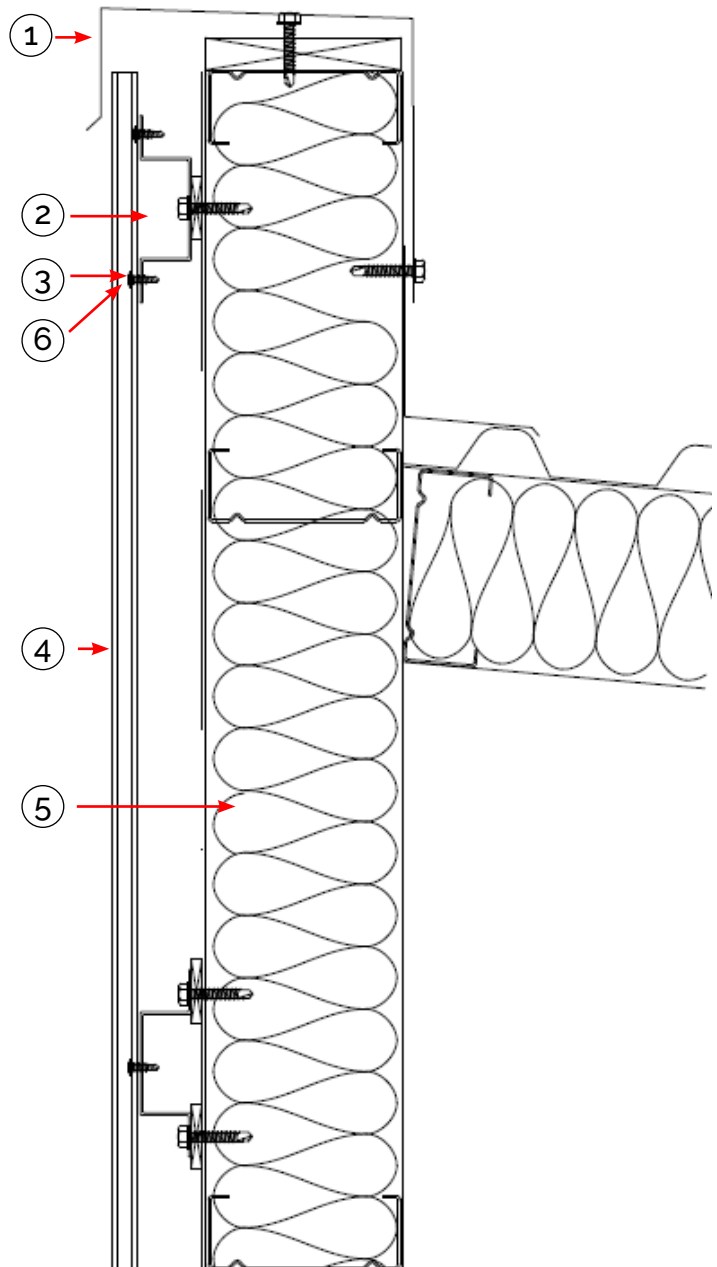
[info@hvgfacades.com.au](mailto:info@hvgfacades.com.au)

# ZINTL®

## SHIPLAP VERTICAL FIXING DETAIL

### ROOF CAPPING DETAIL

- ① Roof Capping by Others
- ② GAL Top Hat
- ③ Universal Fixing Clip & Screw
- ④ ZINTL Board
- ⑤ Sisalation as per specification
- ⑥ EPDM Foam Strip (optional)



#### SHIPLAP VERTICAL FIXING DETAIL

This information is generic in nature and supplied for guidance purposes only. Top Hat dimensions are nominal. Dimensions, spacing, spans and stiffener requirements will need to be confirmed by a suitably qualified professional to suit the specific application.

By **HVG** façades

[hvgfacades.com.au](http://hvgfacades.com.au)

1300 881 712

[info@hvgfacades.com.au](mailto:info@hvgfacades.com.au)



# ZINTL®

PREMIUM INTERLOCKING  
ALUMINIUM CLADDING SYSTEM

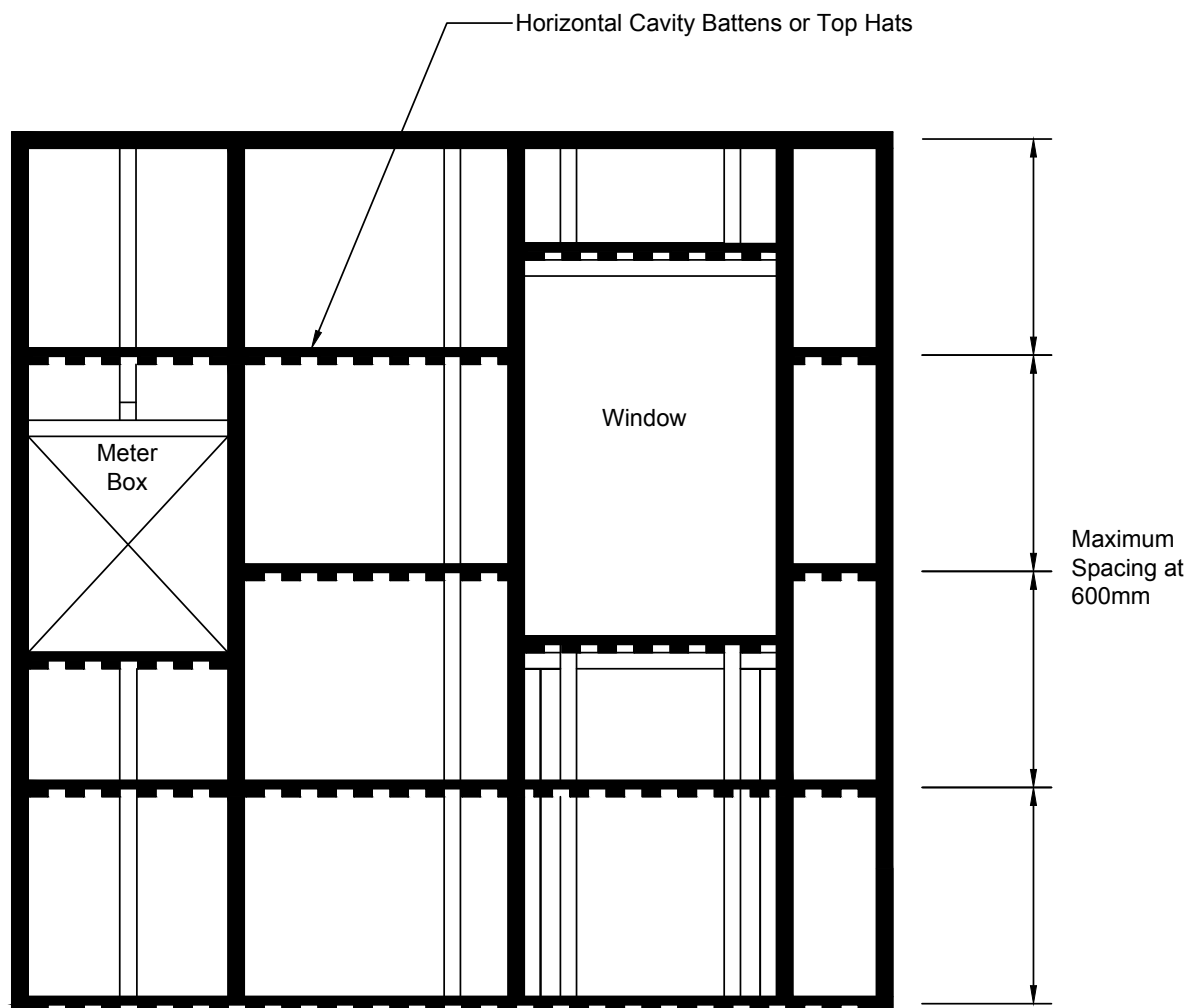
STANDING SEAM  
VERTICAL FIXING DETAILS



# ZINTL®

## STANDING SEAM VERTICAL FIXING DETAIL

### VERTICAL CLADDING WALL LAYOUT



#### STANDING SEAM VERTICAL FIXING DETAIL

This information is generic in nature and supplied for guidance purposes only. Top Hat dimensions are nominal. Dimensions, spacing, spans and stiffener requirements will need to be confirmed by a suitably qualified professional to suit the specific application.

By **HVG** façades

[hvgfacades.com.au](http://hvgfacades.com.au)

1300 881 712

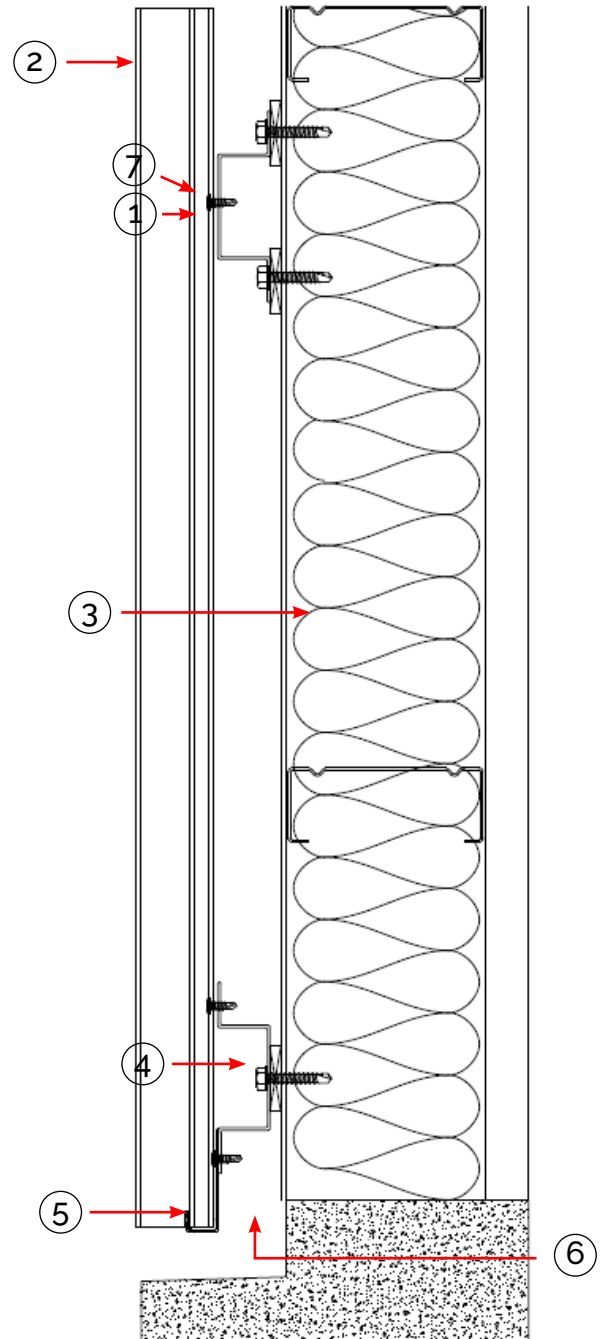
[info@hvgfacades.com.au](mailto:info@hvgfacades.com.au)

# ZINTL®

## STANDING SEAM VERTICAL FIXING DETAIL

### BASE DETAIL

- ① Universal Fixing Clip and Screw
- ② ZINTL Board
- ③ Sisalation as per specification
- ④ GAL Top Hat
- ⑤ Base Channel
- ⑥ 15mm Dip Edge
- ⑦ EPDM Foam Strip (optional)



### STANDING SEAM VERTICAL FIXING DETAIL

This information is generic in nature and supplied for guidance purposes only. Top Hat dimensions are nominal. Dimensions, spacing, spans and stiffener requirements will need to be confirmed by a suitably qualified professional to suit the specific application.

By **HVG** façades

[hvgfacades.com.au](http://hvgfacades.com.au)

1300 881 712

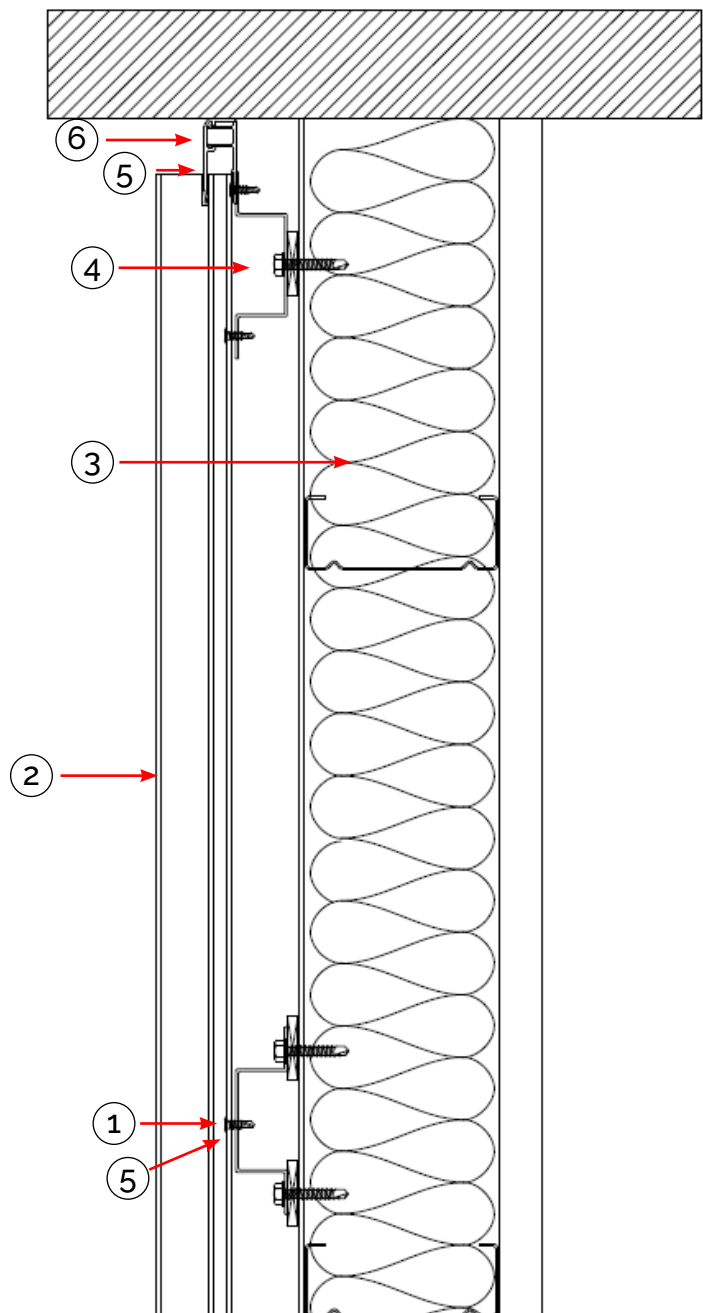
[info@hvgfacades.com.au](mailto:info@hvgfacades.com.au)

# ZINTL®

## STANDING SEAM VERTICAL FIXING DETAIL

### SOFFIT DETAIL

- ① Universal Fixing Clip and Screw
- ② ZINTL Board
- ③ Sisalation as per specification
- ④ GAL Top Hat
- ⑤ Jamb Flashing Base
- ⑥ Jamb Flashing Cap
- ⑦ EPDM Foam Strip (optional)



#### STANDING SEAM VERTICAL FIXING DETAIL

This information is generic in nature and supplied for guidance purposes only. Top Hat dimensions are nominal. Dimensions, spacing, spans and stiffener requirements will need to be confirmed by a suitably qualified professional to suit the specific application.

By **HVG** façades

[hvgfacades.com.au](http://hvgfacades.com.au)

1300 881 712

[info@hvgfacades.com.au](mailto:info@hvgfacades.com.au)

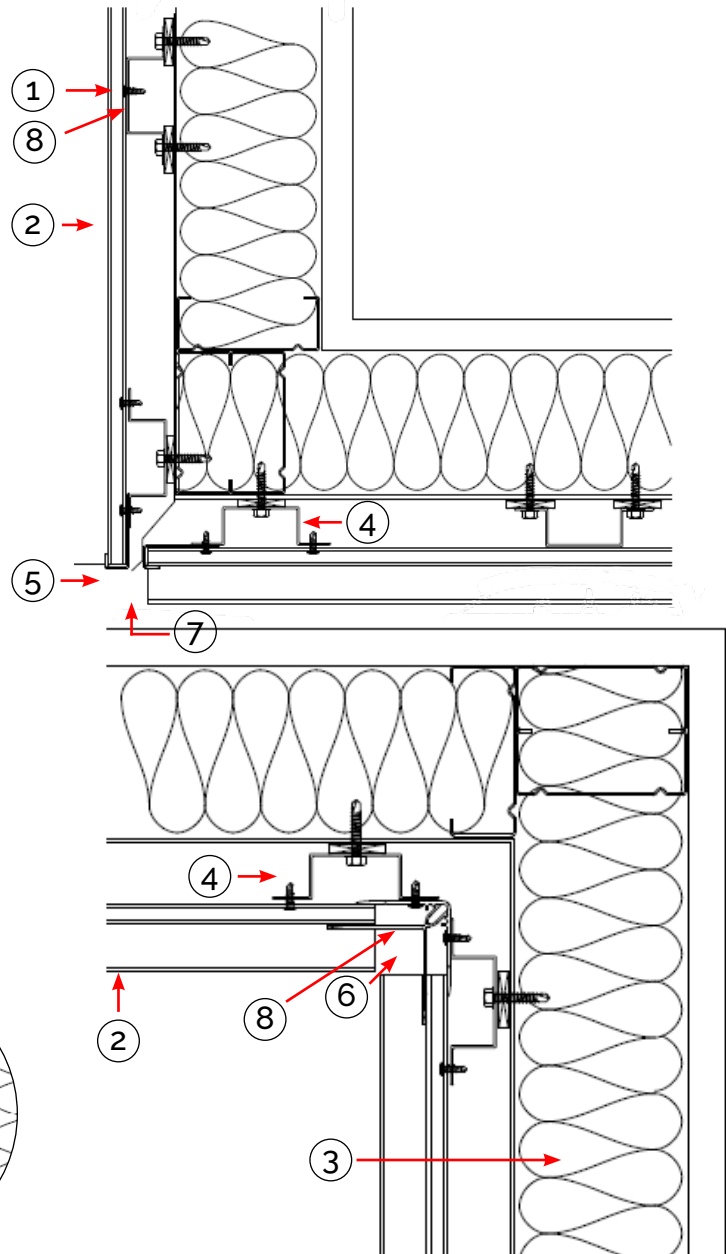


# ZINTL®

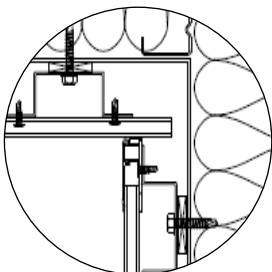
## STANDING SEAM VERTICAL FIXING DETAIL

### WALL TO SOFFIT DETAIL

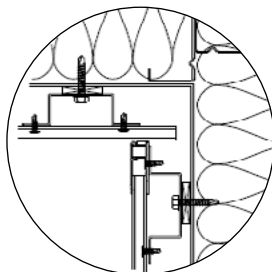
- ① Universal Fixing Clip and Screw
- ② ZINTL Board
- ③ Sisalation as per specification
- ④ GAL Top Hat
- ⑤ Base Channel
- ⑥ Female and Male Corner
- ⑦ Flashing by others
- ⑧ EPDM Foam Strip (optional)



OPTIONAL



OPTIONAL



#### STANDING SEAM VERTICAL FIXING DETAIL

This information is generic in nature and supplied for guidance purposes only. Top Hat dimensions are nominal. Dimensions, spacing, spans and stiffener requirements will need to be confirmed by a suitably qualified professional to suit the specific application.

By **HVG** façades

[hvgfacades.com.au](http://hvgfacades.com.au)

1300 881 712

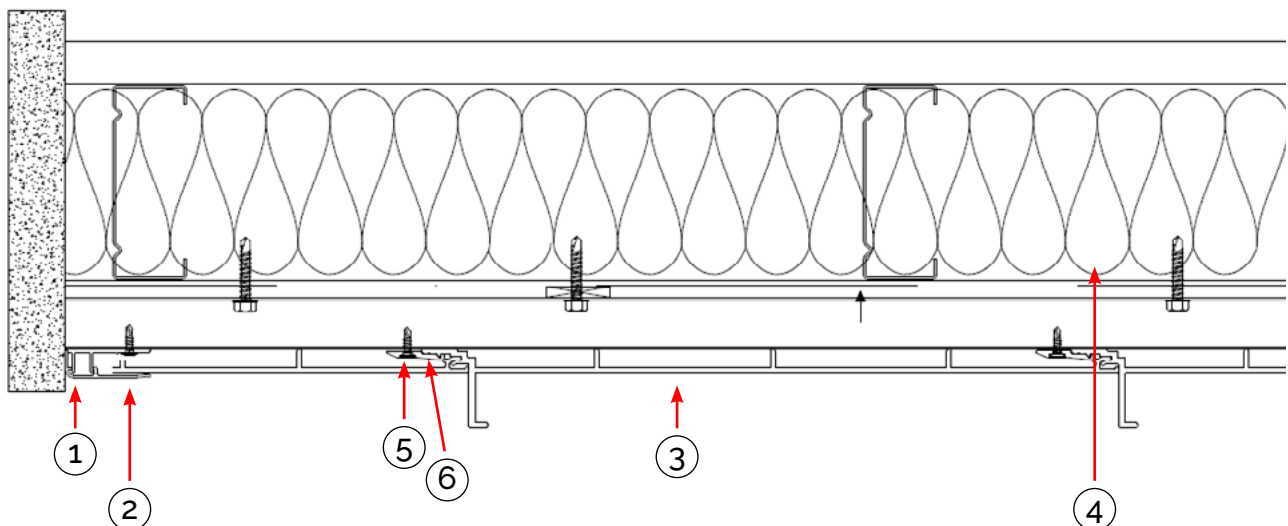
[info@hvgfacades.com.au](mailto:info@hvgfacades.com.au)

# ZINTL®

## STANDING SEAM VERTICAL FIXING DETAIL

### END FINISH DETAIL

- ① Jamb Flashing Cap
- ② Jamb Flashing Base
- ③ ZINTL Board
- ④ Sisalation as per specification
- ⑤ Universal fixing clip and screw
- ⑥ EPDM Foam Strip (optional)



#### STANDING SEAM VERTICAL FIXING DETAIL

This information is generic in nature and supplied for guidance purposes only. Top Hat dimensions are nominal. Dimensions, spacing, spans and stiffener requirements will need to be confirmed by a suitably qualified professional to suit the specific application.

By **HVG** façades

[hvgfacades.com.au](http://hvgfacades.com.au)

1300 881 712

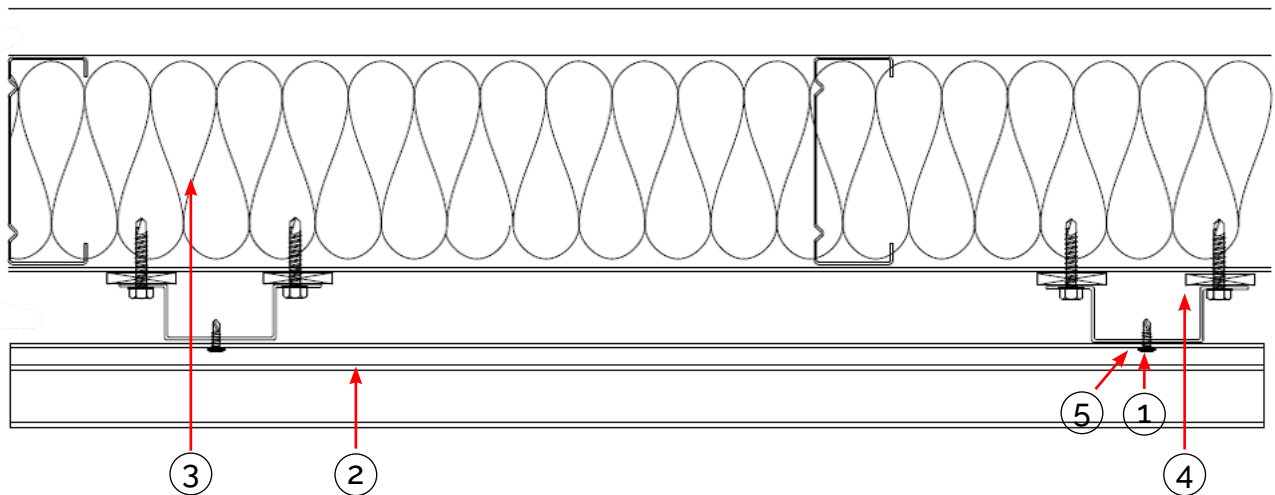
[info@hvgfacades.com.au](mailto:info@hvgfacades.com.au)

# ZINTL®

## STANDING SEAM VERTICAL FIXING DETAIL

### GENERAL CONNECTION DETAIL

- ① Universal Fixing Clip and Screw
- ② ZINTL Board
- ③ Sisalation as per specification
- ④ GAL Top Hat
- ⑤ EPDM Foam Strip (optional)



#### STANDING SEAM VERTICAL FIXING DETAIL

This information is generic in nature and supplied for guidance purposes only. Top Hat dimensions are nominal. Dimensions, spacing, spans and stiffener requirements will need to be confirmed by a suitably qualified professional to suit the specific application.

By **HVG** façades

[hvgfacades.com.au](http://hvgfacades.com.au)

1300 881 712

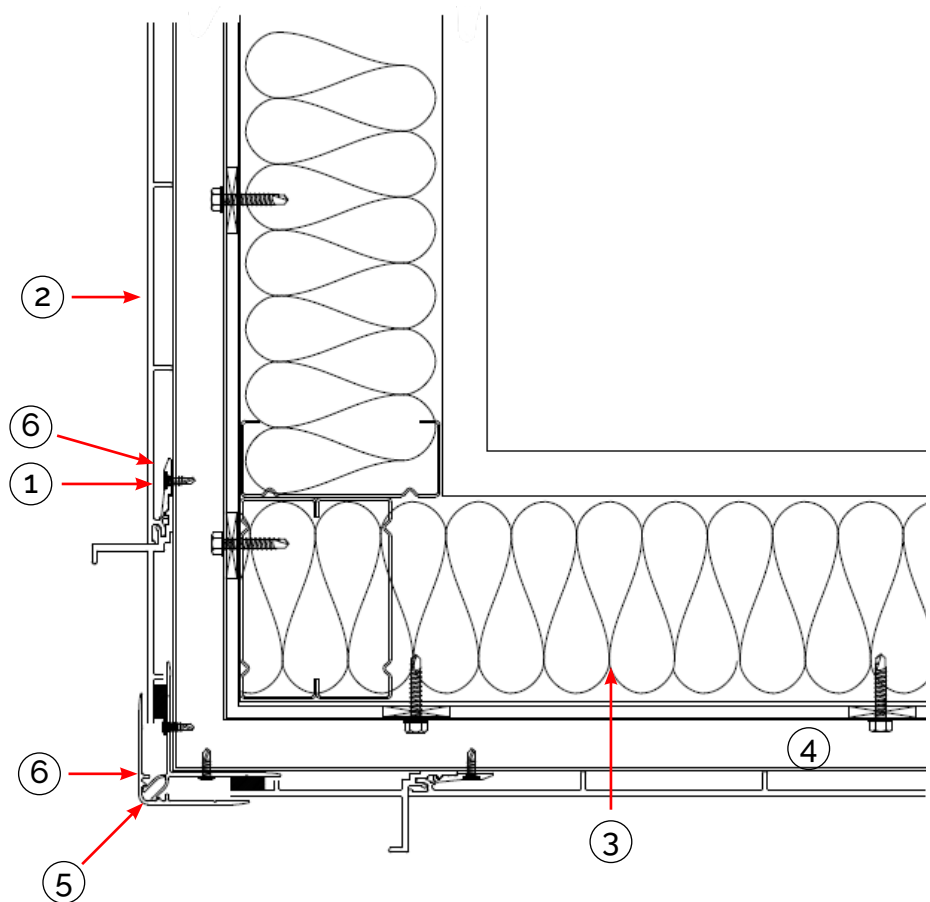
[info@hvgfacades.com.au](mailto:info@hvgfacades.com.au)

# ZINTL®

## STANDING SEAM VERTICAL FIXING DETAIL

### EXTERNAL CORNER DETAIL

- ① Universal Fixing Clip and Screw
- ② ZINTL Board
- ③ Sisalation as per specification
- ④ GAL Top Hat
- ⑤ Female and Male Corner
- ⑥ EPDM Foam Strip (optional)



#### STANDING SEAM VERTICAL FIXING DETAIL

This information is generic in nature and supplied for guidance purposes only. Top Hat dimensions are nominal. Dimensions, spacing, spans and stiffener requirements will need to be confirmed by a suitably qualified professional to suit the specific application.

By **HVG** façades

[hvgfacades.com.au](http://hvgfacades.com.au)

1300 881 712

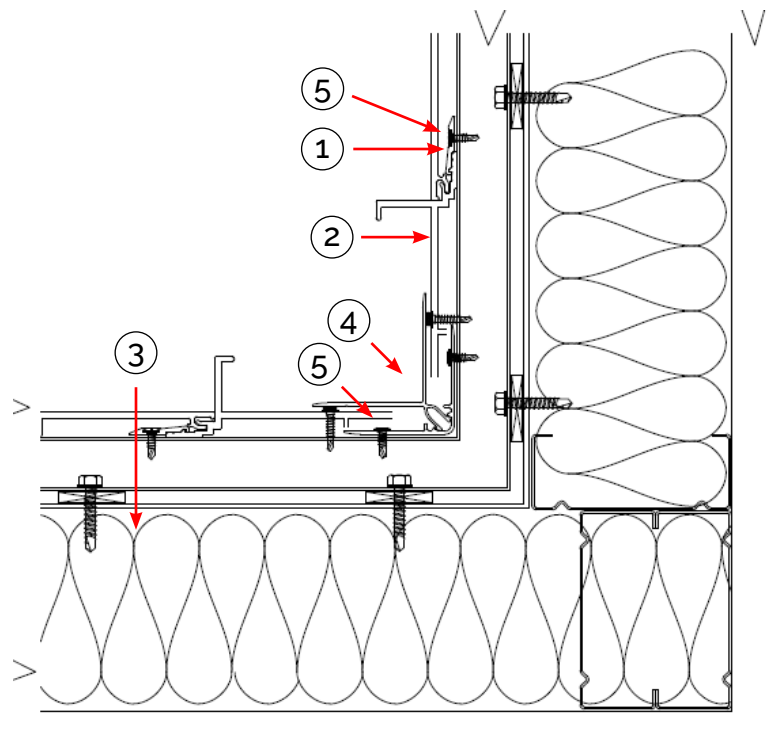
[info@hvgfacades.com.au](mailto:info@hvgfacades.com.au)

# ZINTL®

## STANDING SEAM VERTICAL FIXING DETAIL

### INTERNAL CORNER DETAIL

- ① Universal Fixing Clip and Screw
- ② ZINTL Board
- ③ Sisalation as per specification
- ④ Female and Male Corner
- ⑤ EPDM Foam Strip (optional)



#### STANDING SEAM VERTICAL FIXING DETAIL

This information is generic in nature and supplied for guidance purposes only. Top Hat dimensions are nominal. Dimensions, spacing, spans and stiffener requirements will need to be confirmed by a suitably qualified professional to suit the specific application.

By **HVG** façades

[hvgfacades.com.au](http://hvgfacades.com.au)

1300 881 712

[info@hvgfacades.com.au](mailto:info@hvgfacades.com.au)

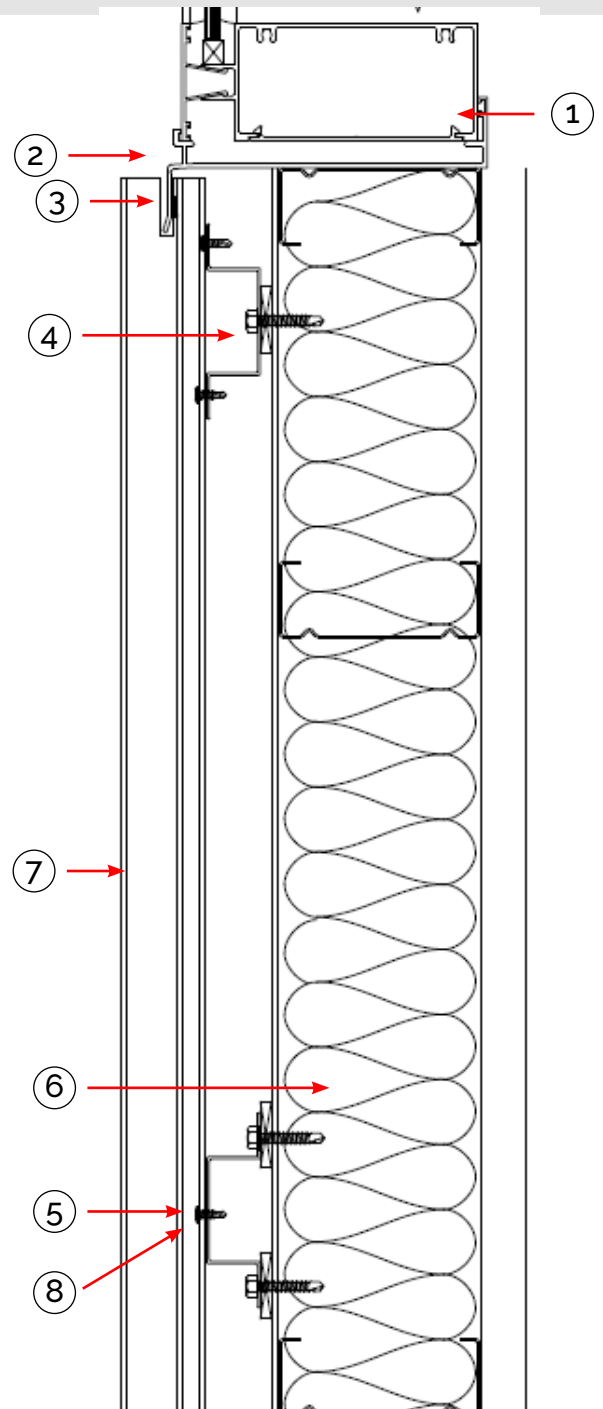
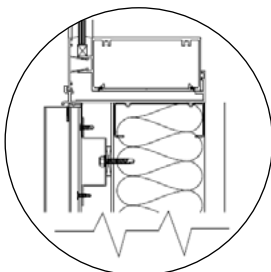
# ZINTL®

## STANDING SEAM VERTICAL FIXING DETAIL

### WINDOW SILL DETAIL

- ① Window Subframe
- ② Window Sill
- ③ EPDM Foam Tape/Caulking
- ④ GAL Top Hat
- ⑤ Universal Fixing Clip and Screw
- ⑥ Sisalation as per specification
- ⑦ ZINTL Board
- ⑧ EPDM Foam Strip (optional)

#### OPTIONAL



#### STANDING SEAM VERTICAL FIXING DETAIL

This information is generic in nature and supplied for guidance purposes only. Top Hat dimensions are nominal. Dimensions, spacing, spans and stiffener requirements will need to be confirmed by a suitably qualified professional to suit the specific application.

By **HVG** façades

[hvgfacades.com.au](http://hvgfacades.com.au)

1300 881 712

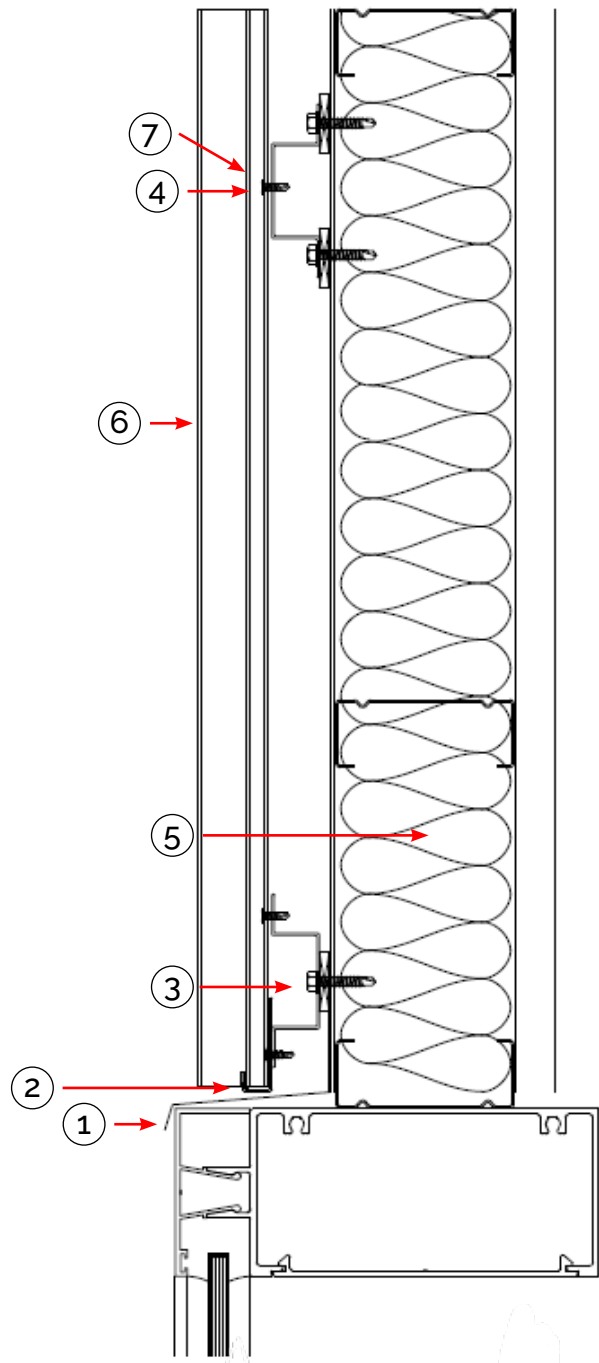
[info@hvgfacades.com.au](mailto:info@hvgfacades.com.au)

# ZINTL®

## STANDING SEAM VERTICAL FIXING DETAIL

### WINDOW HEAD DETAIL

- ① Flashing by Others
- ② Base Channel
- ③ GAL Top Hat
- ④ Universal Fixing Clip and Screw
- ⑤ Sisalation as per specification
- ⑥ ZINTL Board
- ⑦ EPDM Foam Strip (optional)



#### STANDING SEAM VERTICAL FIXING DETAIL

This information is generic in nature and supplied for guidance purposes only. Top Hat dimensions are nominal. Dimensions, spacing, spans and stiffener requirements will need to be confirmed by a suitably qualified professional to suit the specific application.

By **HVG** façades

[hvgfacades.com.au](http://hvgfacades.com.au)

1300 881 712

[info@hvgfacades.com.au](mailto:info@hvgfacades.com.au)

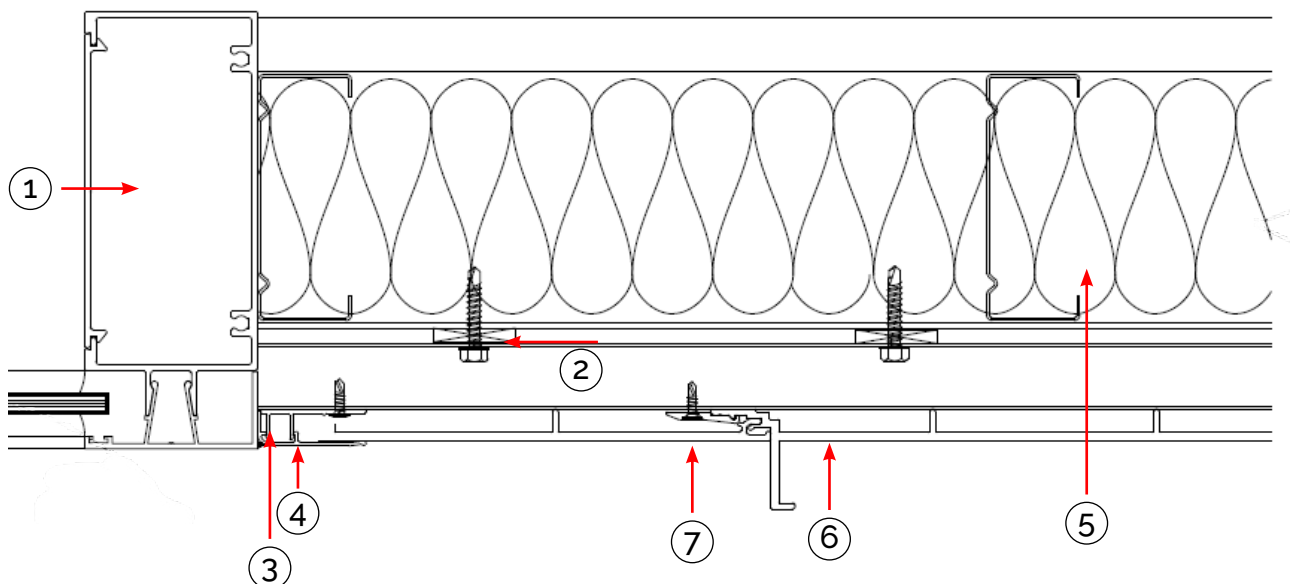
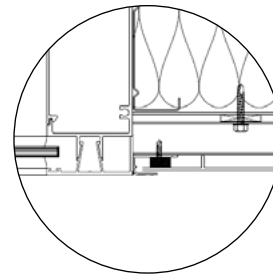
# ZINTL®

## STANDING SEAM VERTICAL FIXING DETAIL

### WINDOW JAMB DETAIL

- ① Window Subframe
- ② Packers
- ③ JAMB Flashing Base
- ④ JAMB Flashing Cap
- ⑤ Sisalation as per specification
- ⑥ ZINTL Board
- ⑦ EPDM Foam Strip (optional)

OPTIONAL



#### STANDING SEAM VERTICAL FIXING DETAIL

This information is generic in nature and supplied for guidance purposes only. Top Hat dimensions are nominal. Dimensions, spacing, spans and stiffener requirements will need to be confirmed by a suitably qualified professional to suit the specific application.

By **HVG** façades

[hvgfacades.com.au](http://hvgfacades.com.au)

1300 881 712

[info@hvgfacades.com.au](mailto:info@hvgfacades.com.au)

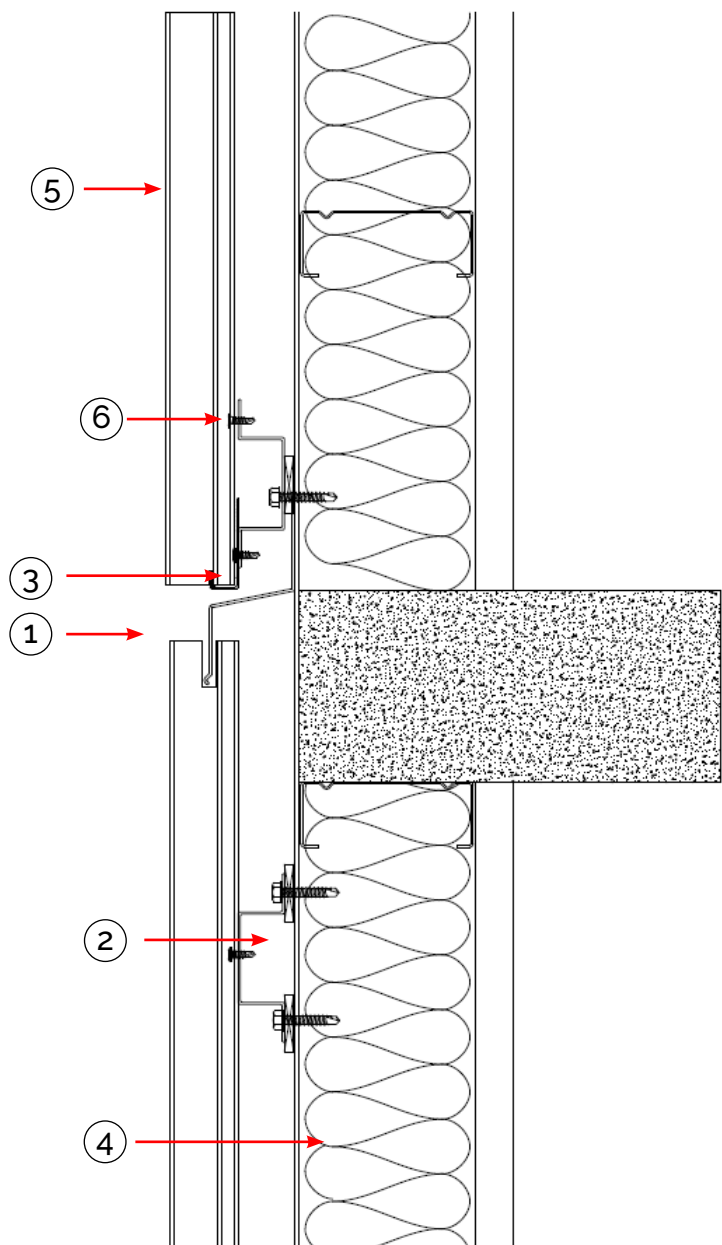


# ZINTL®

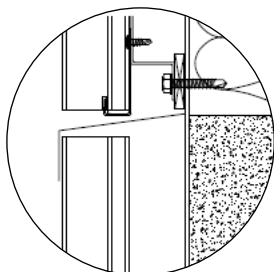
## STANDING SEAM VERTICAL FIXING DETAIL

### INTERSTOREY JOINT

- ① Interstorey Joint
- ② GAL Top Hat
- ③ Base Channel
- ④ Sisalation as per specification
- ⑤ ZINTL Board
- ⑥ Universal Fixing Clip and Screw



OPTIONAL



#### STANDING SEAM VERTICAL FIXING DETAIL

This information is generic in nature and supplied for guidance purposes only. Top Hat dimensions are nominal. Dimensions, spacing, spans and stiffener requirements will need to be confirmed by a suitably qualified professional to suit the specific application.

By **HVG** façades

[hvgfacades.com.au](http://hvgfacades.com.au)

1300 881 712

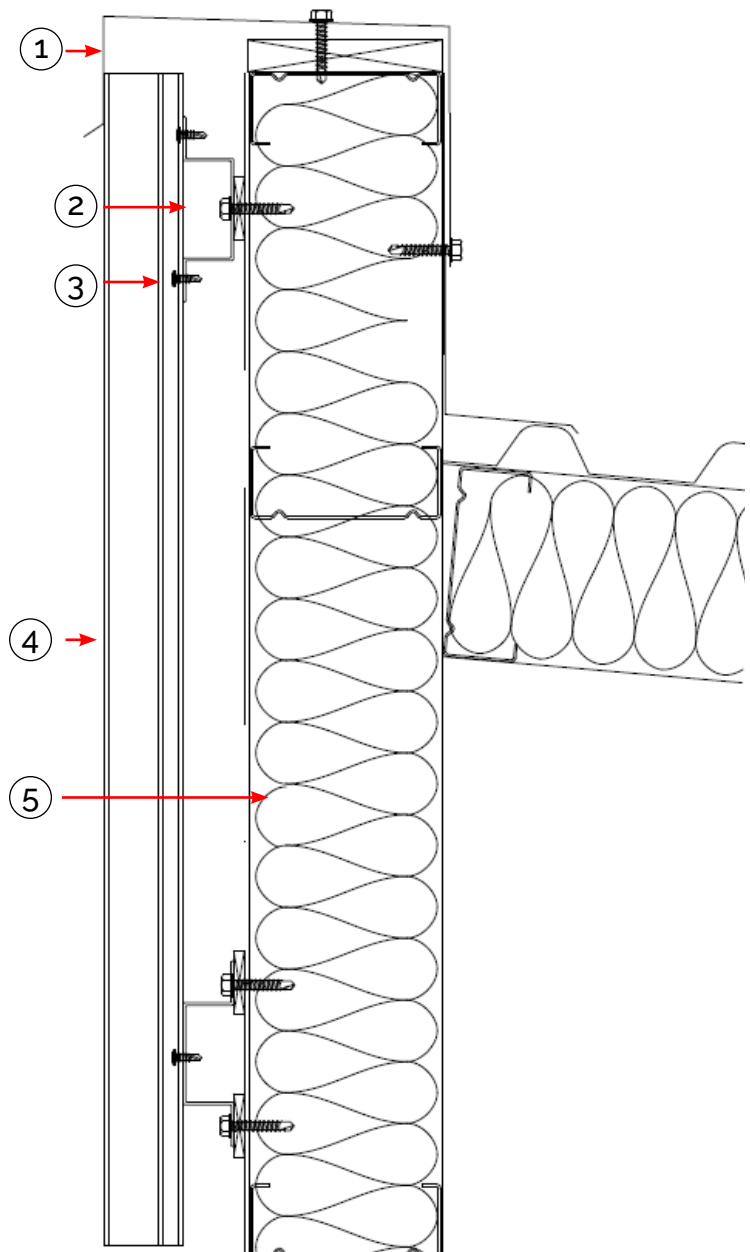
[info@hvgfacades.com.au](mailto:info@hvgfacades.com.au)

# ZINTL®

## STANDING SEAM VERTICAL FIXING DETAIL

### ROOF CAPPING DETAIL

- ① Roof Capping by Others
- ② GAL Top Hat
- ③ Universal Fixing Clip & Screw
- ④ ZINTL Board
- ⑤ Sisalation as per specification



#### STANDING SEAM VERTICAL FIXING DETAIL

This information is generic in nature and supplied for guidance purposes only. Top Hat dimensions are nominal. Dimensions, spacing, spans and stiffener requirements will need to be confirmed by a suitably qualified professional to suit the specific application.

By **HVG** façades

[hvgfacades.com.au](http://hvgfacades.com.au)

1300 881 712

[info@hvgfacades.com.au](mailto:info@hvgfacades.com.au)

# ZINTL®

PREMIUM INTERLOCKING  
ALUMINIUM CLADDING SYSTEM



By **HVG** façades

[hvgfacades.com.au](http://hvgfacades.com.au) | 1300 881 712

**SYDNEY**  
29 Henderson Street  
Turrella NSW 2205

**MELBOURNE**  
25 West Park Drive  
Derrimut VIC 3026

**BRISBANE**  
128 Mica Street  
Carole Park QLD 4300

**PERTH**  
72 Bushland Ridge  
Bibra Lake WA 6163

**ADELAIDE**  
57 Barnes Avenue  
Marleston SA 5033