

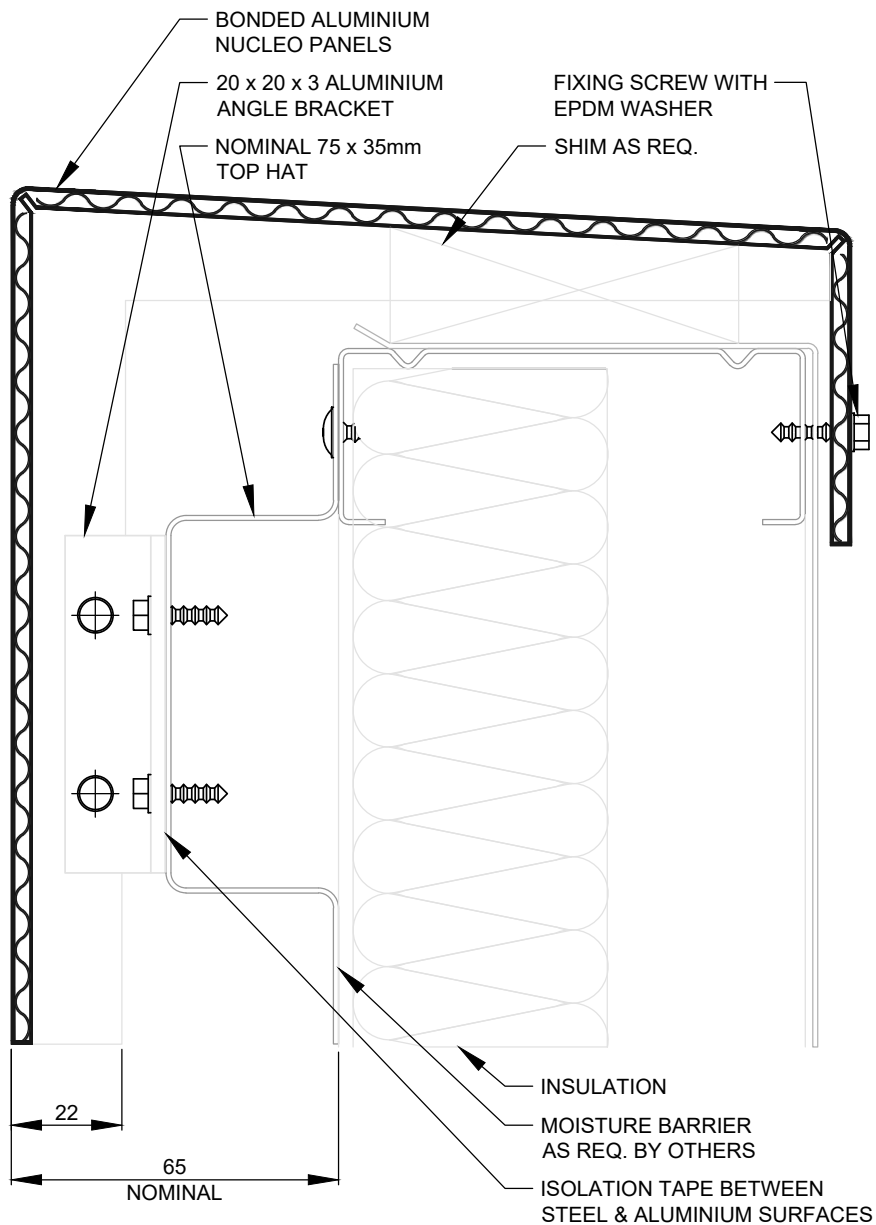


NUCLEO[®]

ALUMINIUM PANELS

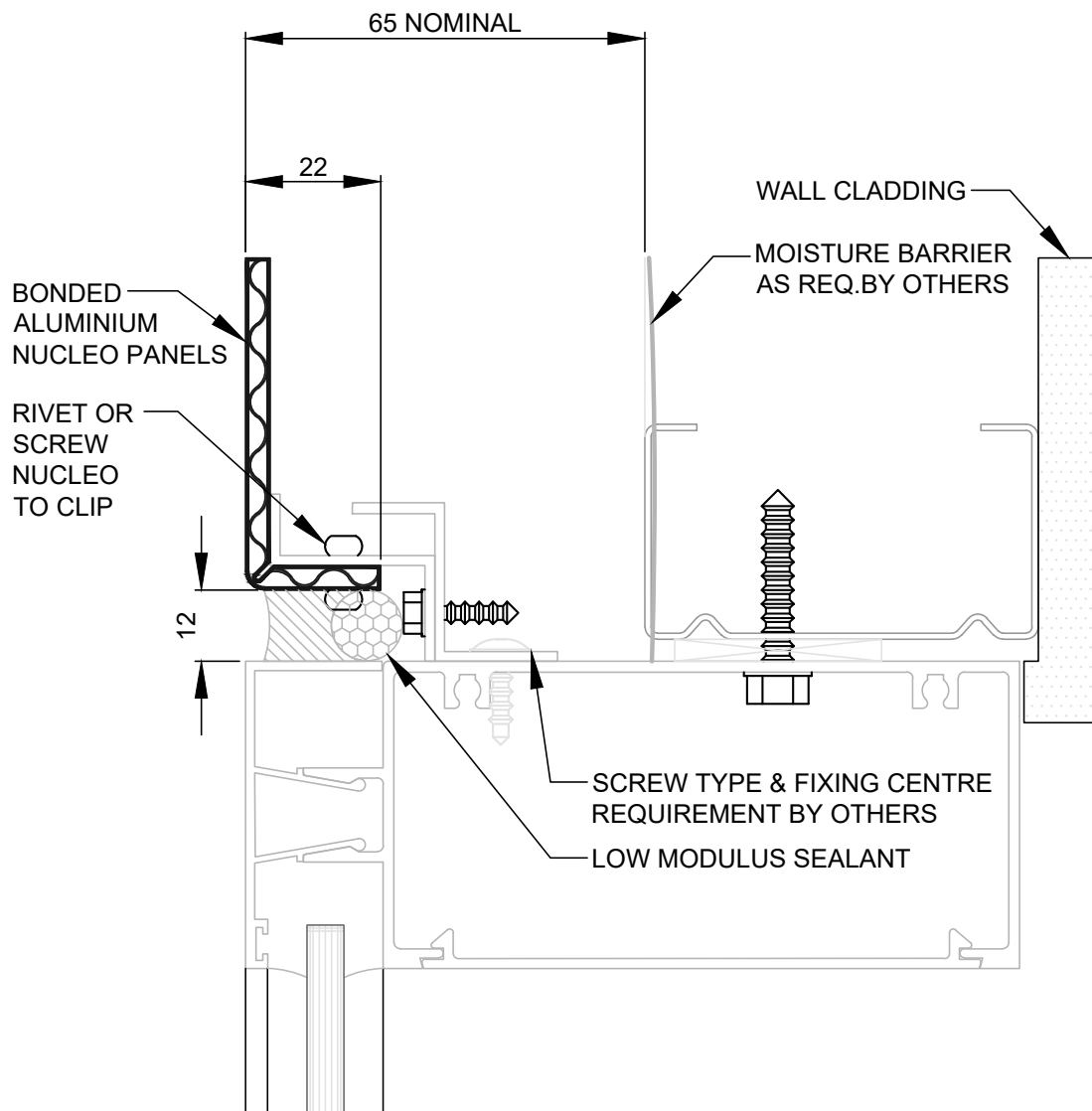
INSTALLATION
DRAWINGS

PARAPET DETAIL



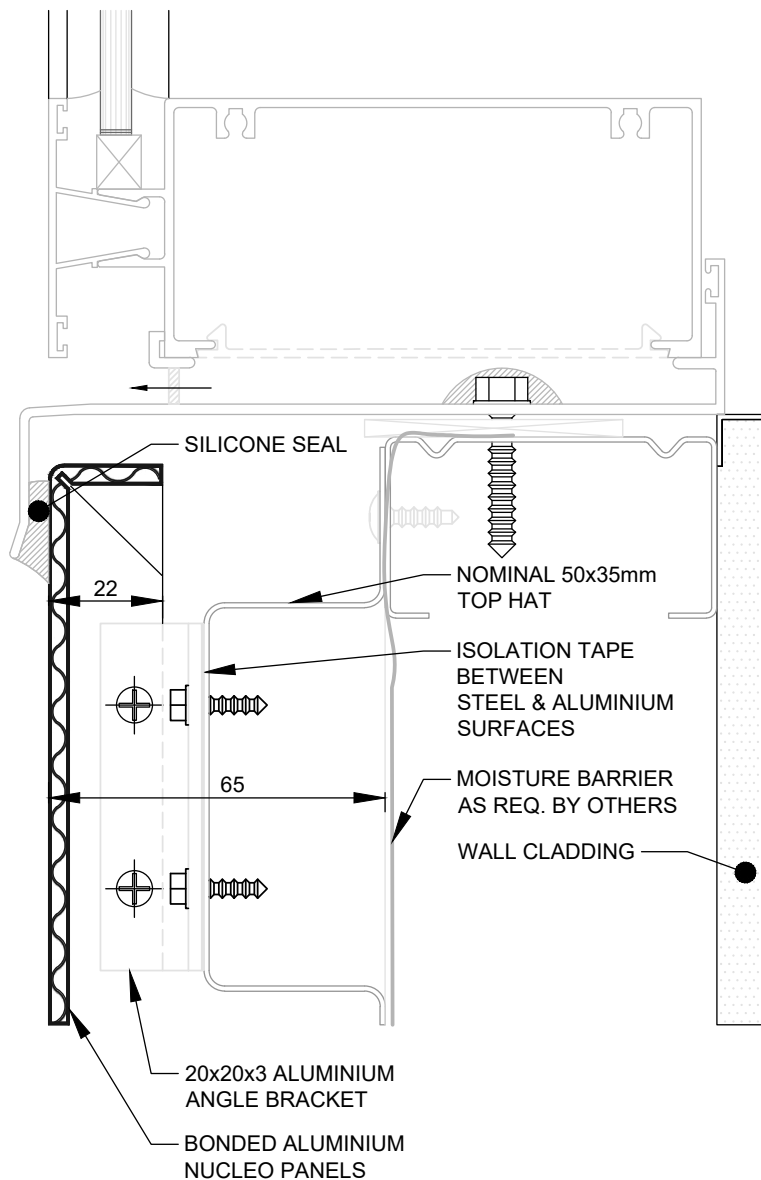
This information is generic in nature and supplied for guidance purposes only. Top Hat dimensions are nominal. Dimensions, spacing, spans and stiffener requirements will need to be confirmed by a suitably qualified professional to suit the specific application.

WINDOW HEAD DETAIL



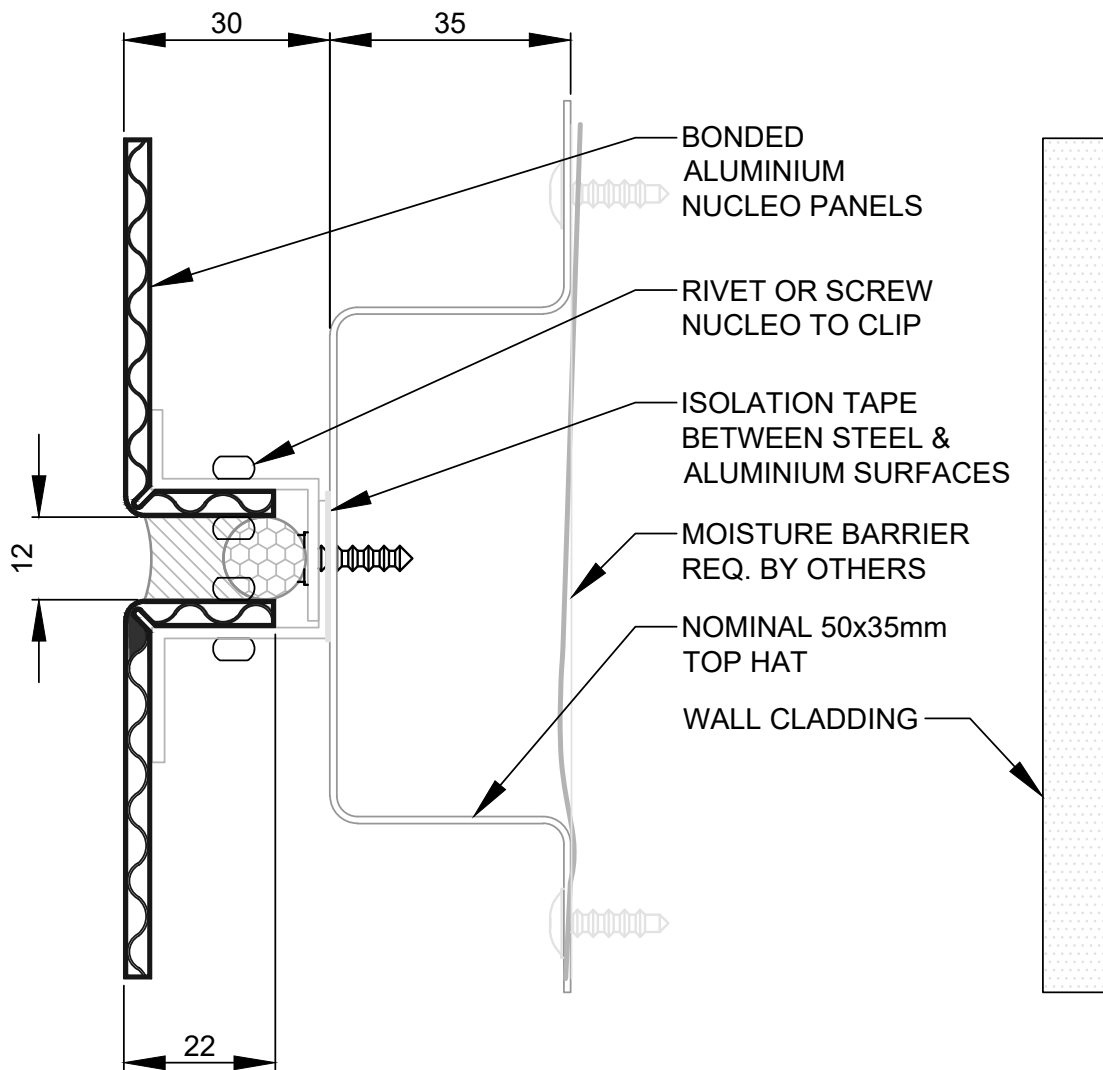
This information is generic in nature and supplied for guidance purposes only. Top Hat dimensions are nominal. Dimensions, spacing, spans and stiffener requirements will need to be confirmed by a suitably qualified professional to suit the specific application.

WINDOW SILL DETAIL



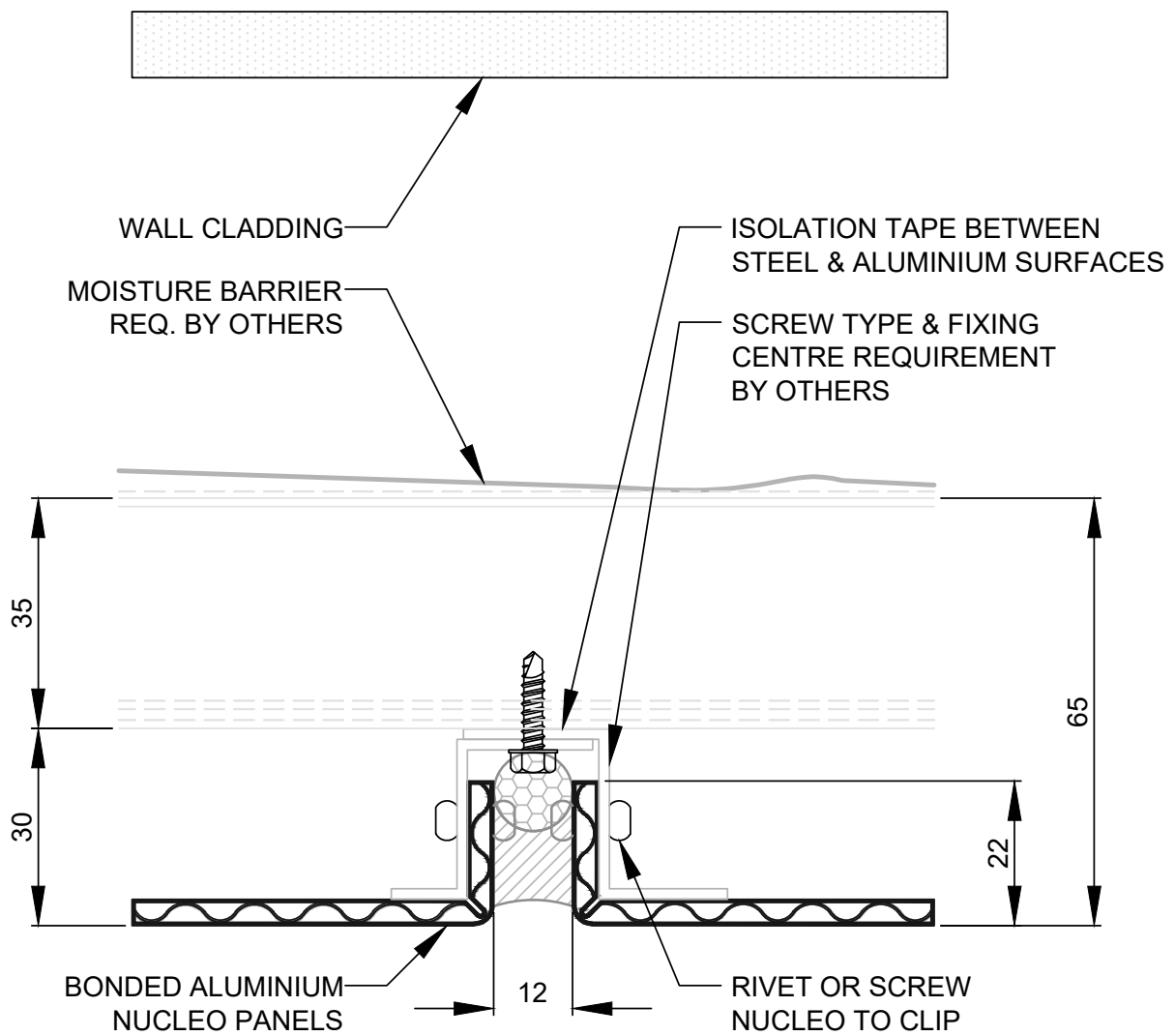
This information is generic in nature and supplied for guidance purposes only. Top Hat dimensions are nominal. Dimensions, spacing, spans and stiffener requirements will need to be confirmed by a suitably qualified professional to suit the specific application.

HORIZONTAL JOINT DETAIL



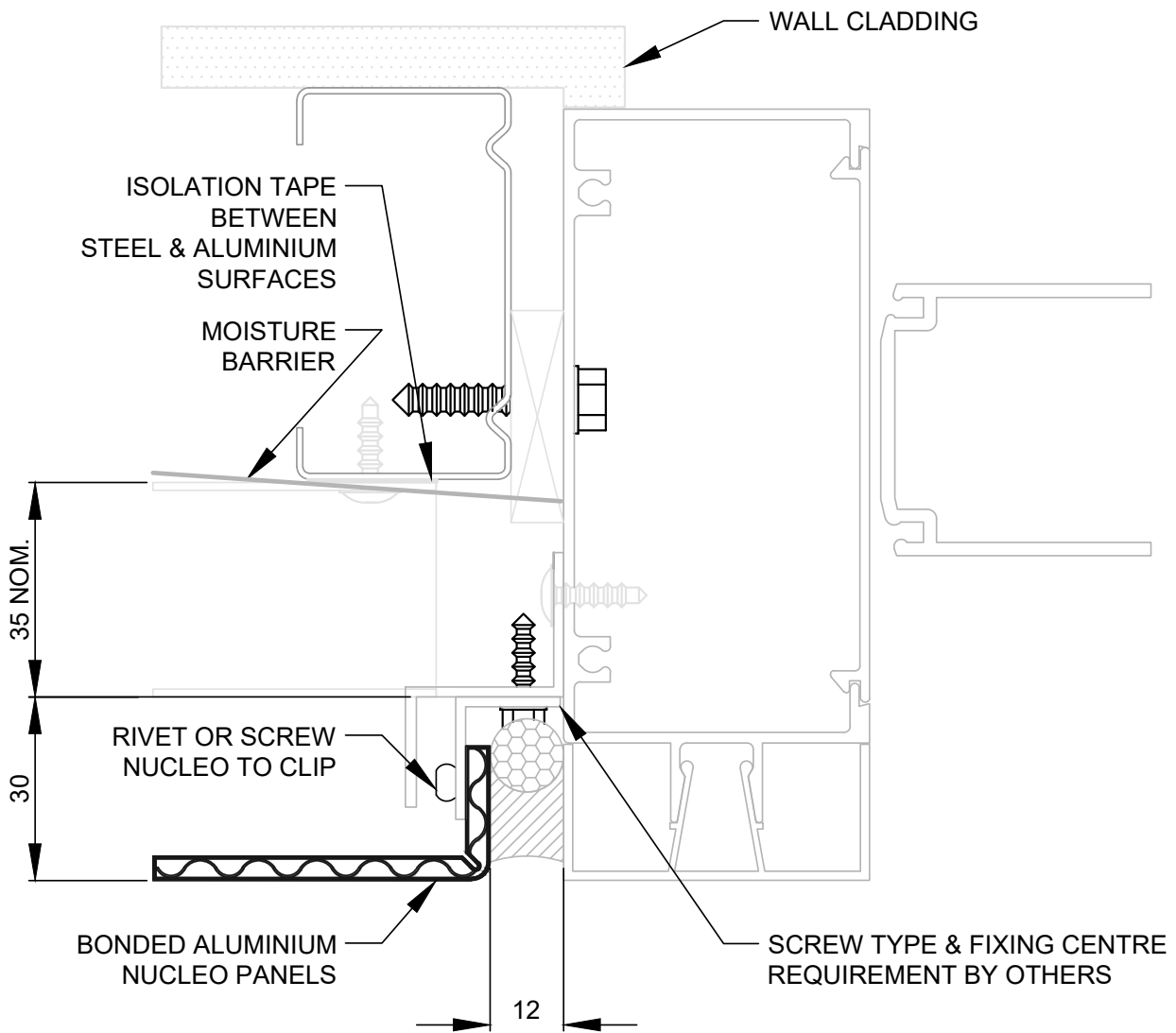
This information is generic in nature and supplied for guidance purposes only. Top Hat dimensions are nominal. Dimensions, spacing, spans and stiffener requirements will need to be confirmed by a suitably qualified professional to suit the specific application.

VERTICAL JOINT DETAIL



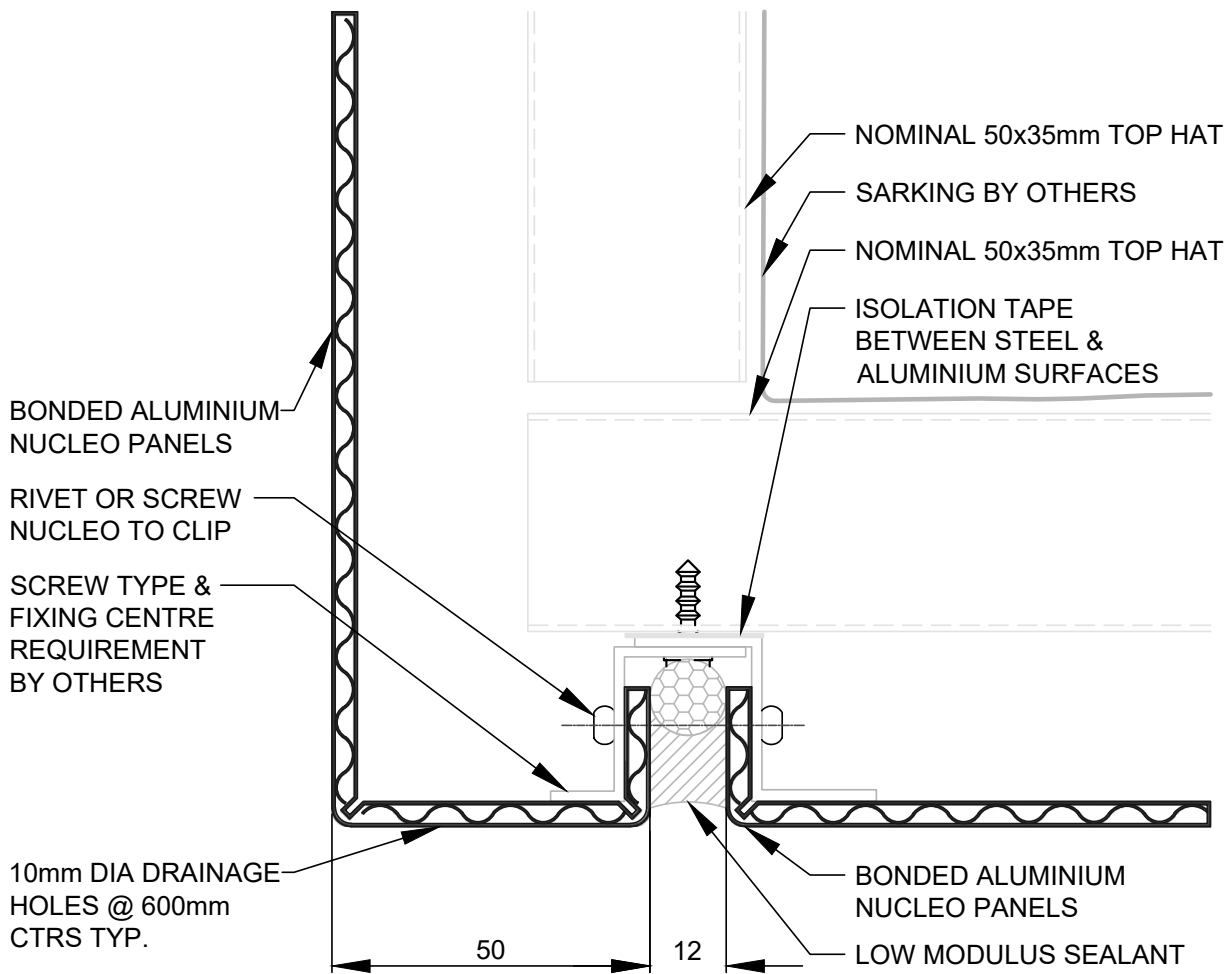
This information is generic in nature and supplied for guidance purposes only. Top Hat dimensions are nominal. Dimensions, spacing, spans and stiffener requirements will need to be confirmed by a suitably qualified professional to suit the specific application.

JAMB DETAIL



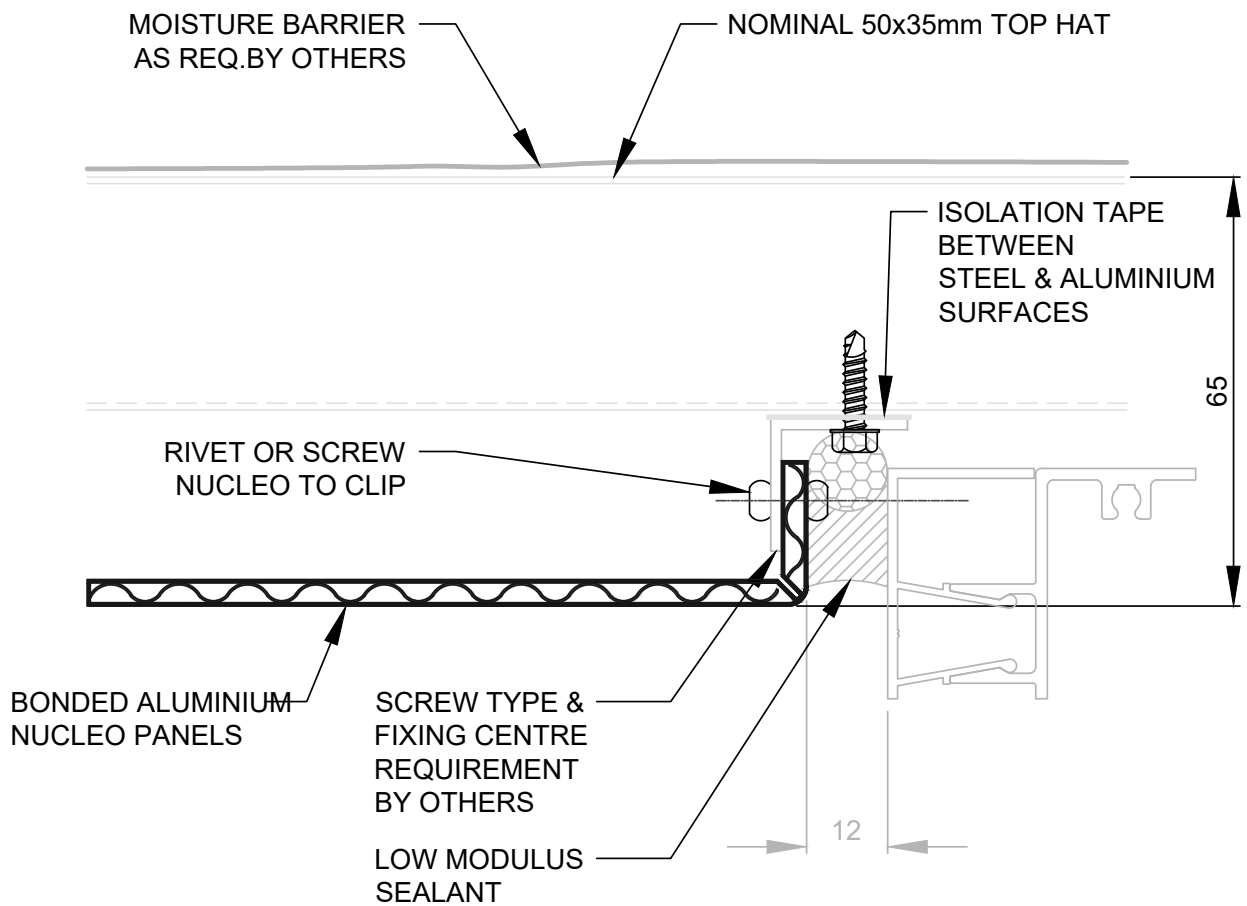
This information is generic in nature and supplied for guidance purposes only. Top Hat dimensions are nominal. Dimensions, spacing, spans and stiffener requirements will need to be confirmed by a suitably qualified professional to suit the specific application.

SOFFIT DETAIL ONE



This information is generic in nature and supplied for guidance purposes only. Top Hat dimensions are nominal. Dimensions, spacing, spans and stiffener requirements will need to be confirmed by a suitably qualified professional to suit the specific application.

SOFFIT DETAIL TWO



This information is generic in nature and supplied for guidance purposes only. Top Hat dimensions are nominal. Dimensions, spacing, spans and stiffener requirements will need to be confirmed by a suitably qualified professional to suit the specific application.

NUCLEO[®]

ALUMINIUM PANELS

Stocked in Australia in a range of colours, finishes and sizes. Nucleo[®] panels offer high colour retention. Custom sizes can also be provided upon request.



DEEMED NON-COMBUSTIBLE
TESTED TO AS1530.1 AND AS1530.3

Please seek professional advice when using Nucleo[®] on Type A and B buildings. The adhesive component is combustible and is not required to be tested under AS1530.1 and AS1530.3.

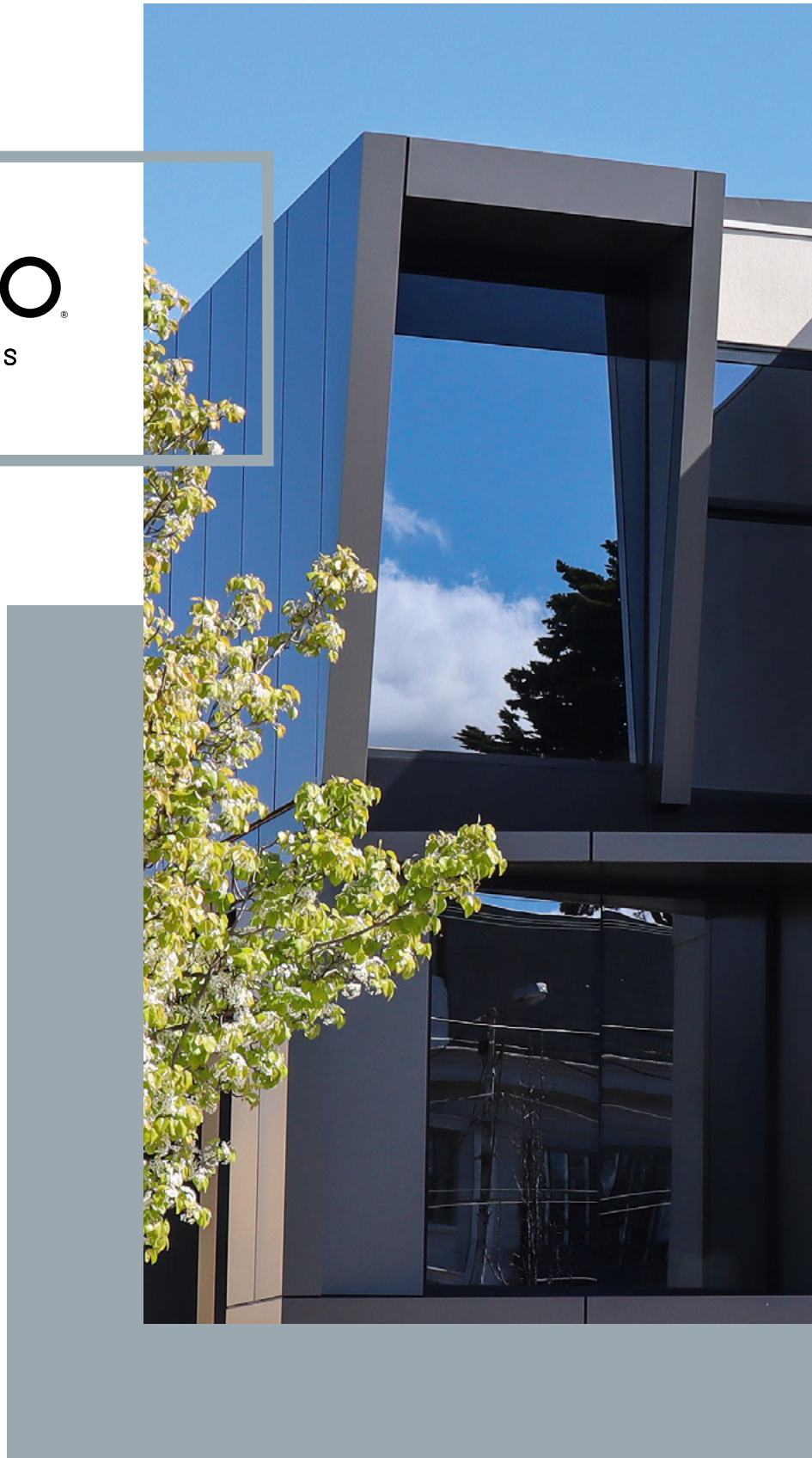


100% RECYCLABLE

15 YEAR
warranty



ORDER
SAMPLES
HERE



By **HVG** façades

hvffacades.com.au | 1300 881 712

SYDNEY
29 Henderson Street
Turrella NSW 2205

MELBOURNE
25 West Park Drive
Derrimut VIC 3026

BRISBANE
128 Mica Street
Carole Park QLD 4300

PERTH
72 Bushland Ridge
Bibra Lake WA 6163

ADELAIDE
57 Barnes Avenue
Marleston SA 5033