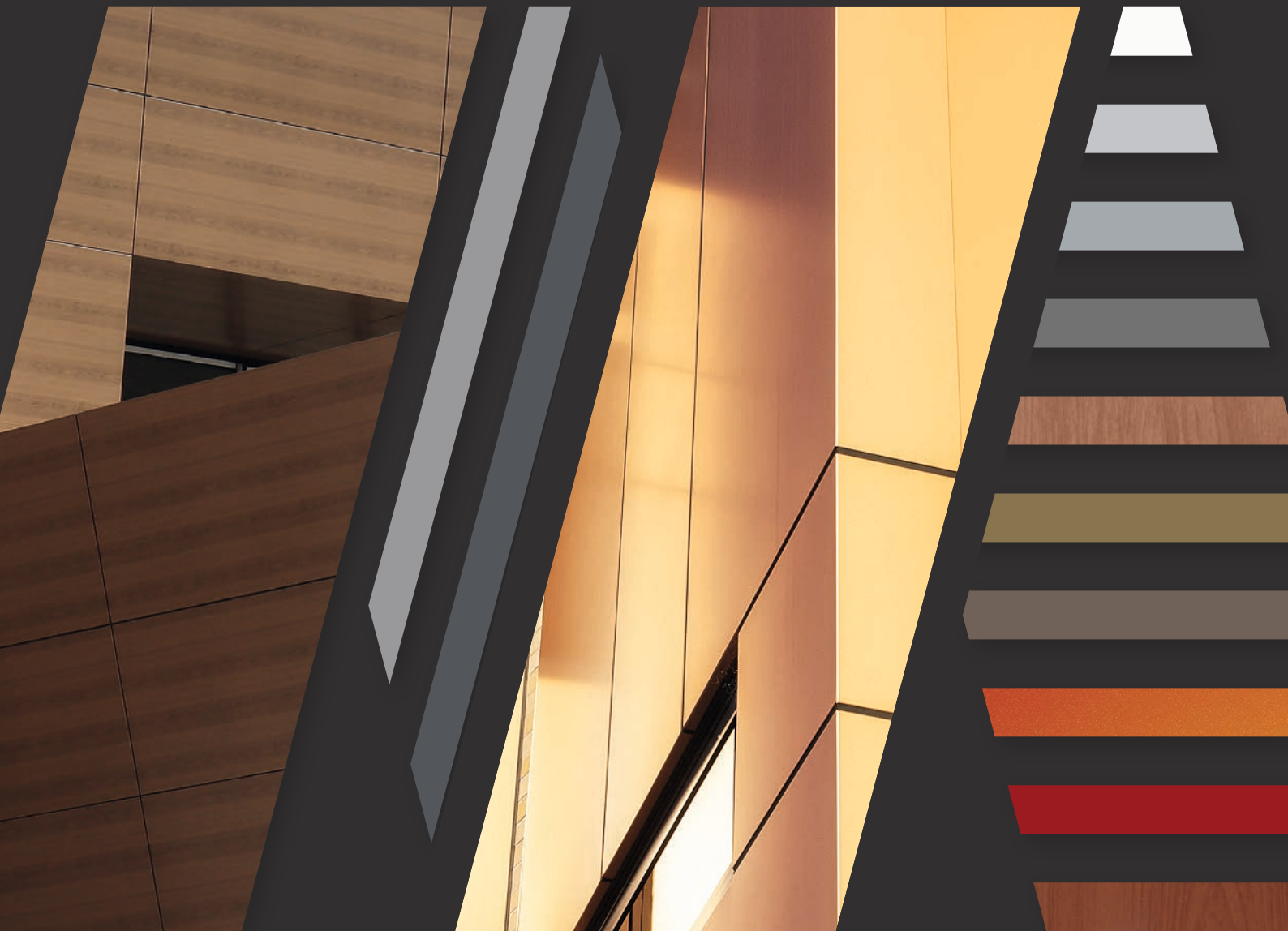




**MondoClad**



NON-COMBUSTIBLE PRE-FINISHED ALUMINIUM PANELS

VISUALISE YOUR NEXT PROJECT  
ORDER SAMPLES HERE

## SYDNEY WATER BUILDING

| NSW

7000m<sup>2</sup>

SILVER METALLIC  
SILVER GREY  
METALLIC



**MondoClad**

## NON-COMBUSTIBLE ALUMINIUM PANELS

**MondoClad® is a 3mm solid aluminium panel that is coil coated with a PPG Duranar PVDF paint finish.**

The superior PPG Duranar PVDF architectural paint finish ensures UV stability, colour retention and a product that will stand the test of time.

MondoClad® is CodeMark certified and has been tested to AS 1530.1 and AS 1530.3 achieving zero for ignitability and spread of flame.

MondoClad® has earned a Global GreenTagCert™ PHD™ (Product Health Declaration) and a GreenTag HealthRATE™ certification through a rigorous accreditation process conducted by the independent certification body, Global GreenTag International.

MondoClad® is available in five capital cities in Australia for efficient service and delivery. Our warehouses across Australia stock a variety of colours and finishes to fulfil your needs.

Our solid aluminium panels provide architects, designers, developers, builders, and contractors a premium solid aluminium façade panel, that is non-combustible and can be safely specified for commercial, educational, aged care and residential projects without compromising design.

Utilising a highly corrosive resistant marine grade alloy, MondoClad® is ideal for installation in the harsh Australian environment.



**MondoClad.**

## GLOBAL GREENTAG CERTIFICATIONS

### MondoClad® reaches new heights with Global GreenTag Certifications.

HVG Facades is proud that MondoClad®, our renowned solid aluminium panel, continues to lead in sustainable certification. In collaboration with Global GreenTag, MondoClad® has achieved a PHD™ (Product Health Declaration) and HealthRATE™ and GreenRate™ Level A certifications highlighting our dedication to promoting sustainable practices within the construction industry.

MondoClad® underwent a comprehensive evaluation of its impact on human health and was awarded the Global GreenTag PlatinumHEALTH™ HealthRATE™ designation through the PHD™ program. This certification confirms that MondoClad® is safe for use, with no significant toxicity concerns.

Our commitment was not just to meet certification standards but to undergo a rigorous, transparent, and scientifically reviewed assessment by Global GreenTag, ensuring the health, safety, and eco-performance of our product.



**BERRIMAH FARM SCIENCE PRECINCT**

NT

450m<sup>2</sup>

VARIOUS GREENS (CUSTOM COLOURS)

## MONDOCLAD® FEATURES

### MondoClad® solid aluminium panels set a new standard in high-performance, quality facades.

Offered in an extensive range of colours, these pre-painted panels are coil coated and suited to a range of applications from high-rise and education to health care and residential developments. Exclusively supplied by HVG Facades, MondoClad® is now used in new constructions and the recladding of existing projects across Australia.

### A product of enduring style

MondoClad®'s wide range of finishes and sizes means that even the most complex architectural designs can be achieved. Stocked locally in numerous colours and sizes, MondoClad® also offers custom colours and measurements on request.

MondoClad® is non-combustible, and can be easily fabricated into cassettes. This combination of low-maintenance and durability means that architects, designers, developers, builders and contractors can specify confidently without compromising design. The superior PVDF

architectural paint finish of MondoClad® also ensures UV stability and colour retention, so that architectural designs will stand the test of time.

### A non-combustible solution that is designed to last

MondoClad® is categorically non-combustible, in accordance with AS1530.1 standards, which sets it apart from many other market offerings.

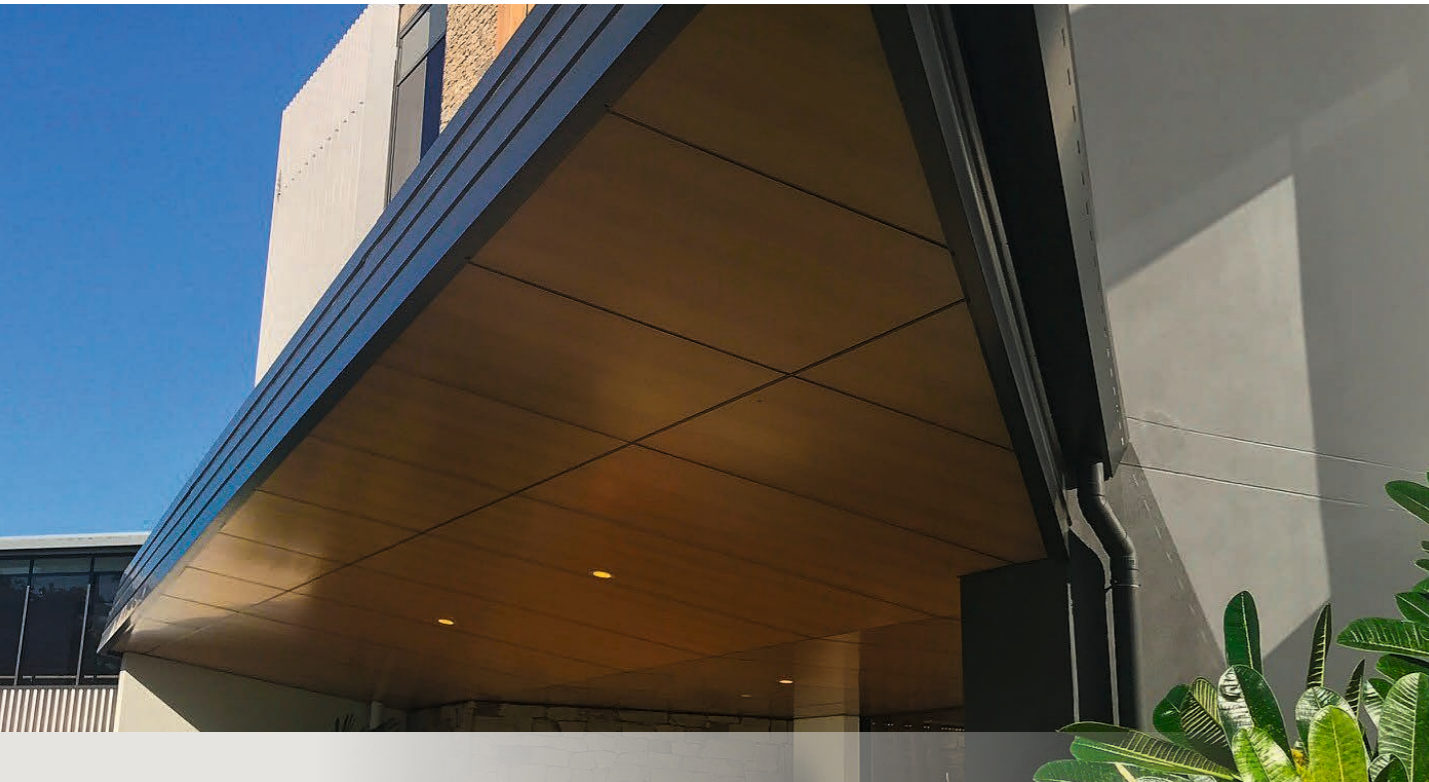
Utilising a corrosion-resistant, marine-grade alloy, MondoClad® is ideal for use in harsh Australian conditions. The high-quality, coil coated paint finish provides modern colour options with durable UV resistance and gloss retention.

### Sustainable alternative to timber

MondoClad® premium solid aluminium panels come in a variety of woodgrain colours – a sustainable alternative to timber products.

Complete your project in one of our premium timber finishes that are maintenance free in a wide range of colour choices. Choose your next woodgrain project in a Blonde Pine, Honey Oak, African Teak, Cherry or Blackbutt.





## BENEFITS

- **100% non-combustible to AS1530.1 and AS 1530.3**  
This means that MondoClad® is NCC compliant, streamlining the building approvals process.
- **Compliant to F3P1 for weatherproofing**  
MondoClad® has been tested to AS4284 and meets the criteria of the F3P1 Performance Requirement as part of NCC 2022.
- **High-quality marine-grade aluminium**  
MondoClad® is designed to be corrosion resistant, meaning it will not oxidise, making it an ideal choice for all locations.
- **Custom sizes, colours and finishes**  
MondoClad® offers custom colours and sheet sizes, including oversize sheets, to ensure your design is achieved.
- **PVDF finish**  
Superior long lasting finish that is coil coated, with no cracking when fabricated.
- **Easy to fabricate**  
When folding, routing and cutting.
- **Competitively priced**  
MondoClad® is an affordable high-quality option.
- **20-year warranty**  
MondoClad® offers high colour retention and will not oxidise over time. Warranty available on application and subject to approval. Contact our sales team for further information.
- **Stocked in Australia**  
As MondoClad® is stocked locally, there are reduced lead times for delivery.
- **Technical support**  
Our team of industry professionals are available to provide their expertise and technical knowledge to assist in your product-related enquiries.



**MondoClad**

## COLOUR SELECTION

**MondoClad® is non-combustible, durable, and can be easily folded into cassettes, meaning that even the most ambitious creative vision can be realised.**

### Colour that lasts

The superior PVDF architectural coating of MondoClad® offers excellent UV stability and coil coated colour retention. MondoClad® offers a 20 year warranty, available on application and subject to approval.

### Installation of metallic panels

To avoid possible differences in levels of light reflectivity, panels are best installed in the direction indicated on the protective peel-off foil.

Minor colour variations may occur between different production batches.

### Confidence and certainty

Testing and installation of our MondoClad® solid aluminium panels was performed in order to satisfy stringent CodeMark requirements. Our premium solid aluminium cladding panels – MondoClad® will provide you with extra comfort and peace-of-mind knowing that it is CodeMark certified.

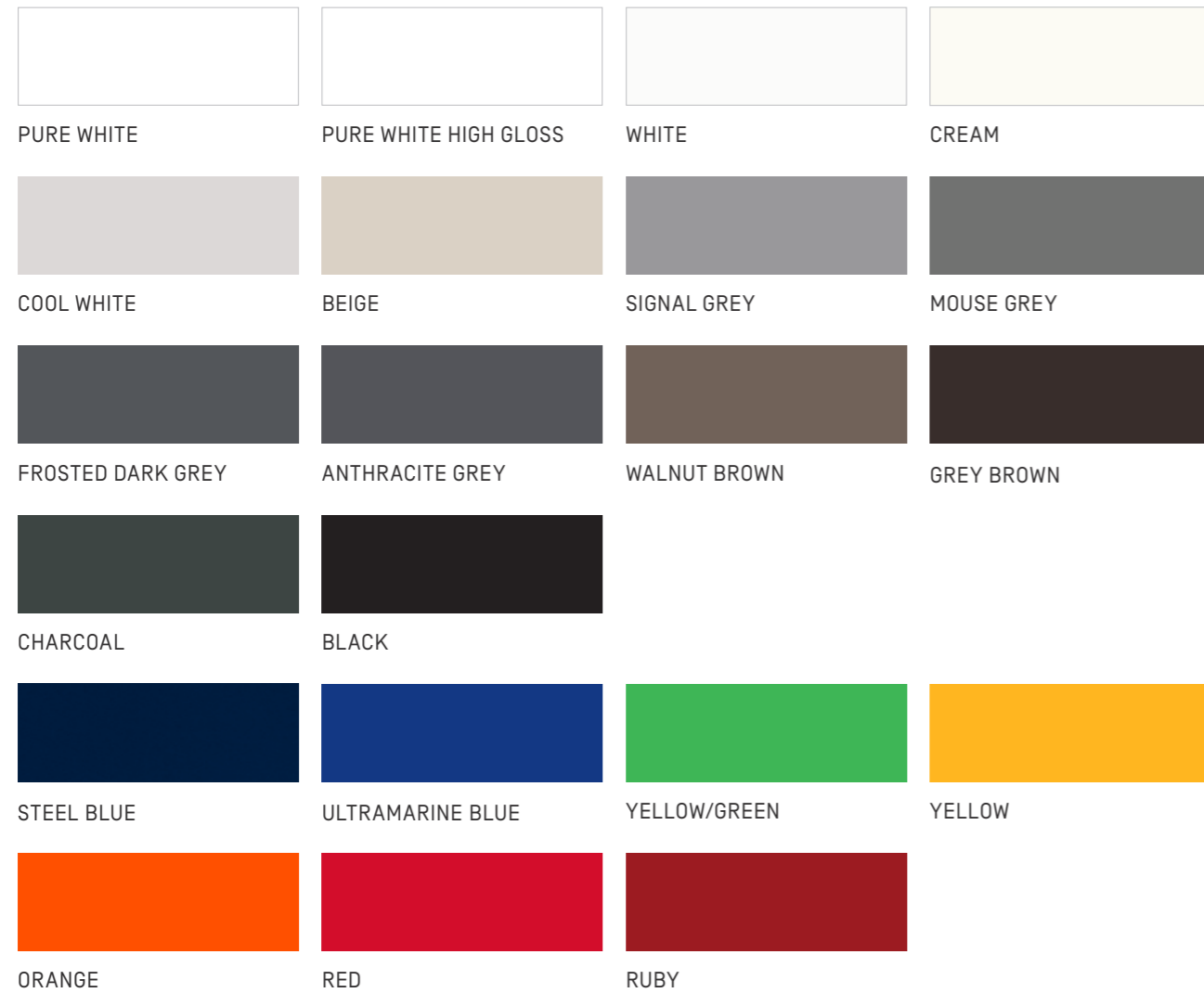
### SYDNEY WESTS TRIAL COURTS | NSW

4400m<sup>2</sup>

COPPER PENNY  
SILVER METALLIC  
BEIGE  
SAGE  
WHITE  
DARK GREY METALLIC  
ROSE SILVER  
(CUSTOM COLOUR)

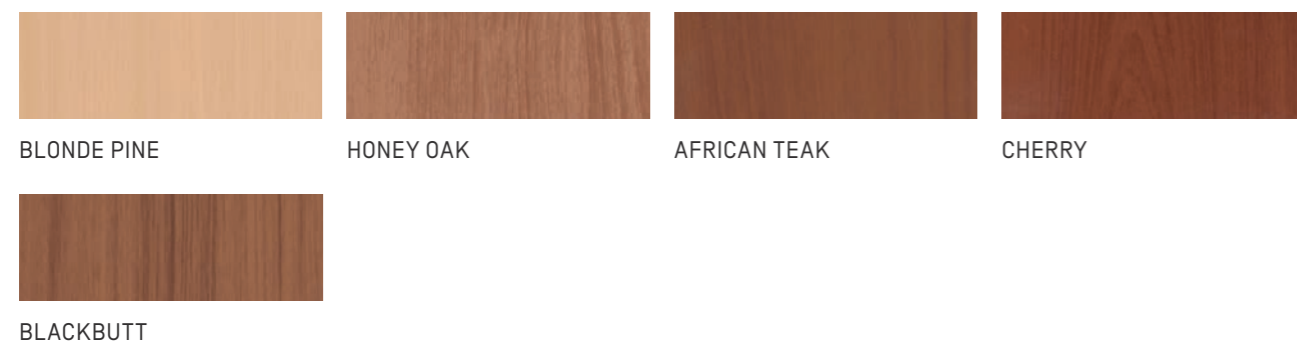
## SOLID

Bright, subtle, bold or neutral, the MondoClad® Solid colour range is offered in soft natural tones and vibrant hues that enhance any architectural design. Covered in a tough, PVDF coating, the panels retain both colour and gloss and do not chip or peel.



## WOODGRAIN

MondoClad® Woodgrain range offers a high quality and sustainable alternative to timber products. Complete your projects in one of our premium timber finishes that are maintenance free.



Colours displayed on this colour card are a guide only and have been matched as close as possible to production standards under daylight conditions. Due to the nature of the printing process some degree of colour and gloss level variation may occur. Where more than one finish is available product colour may vary. We recommend that you use production line prepared samples for final colour selection or approval.

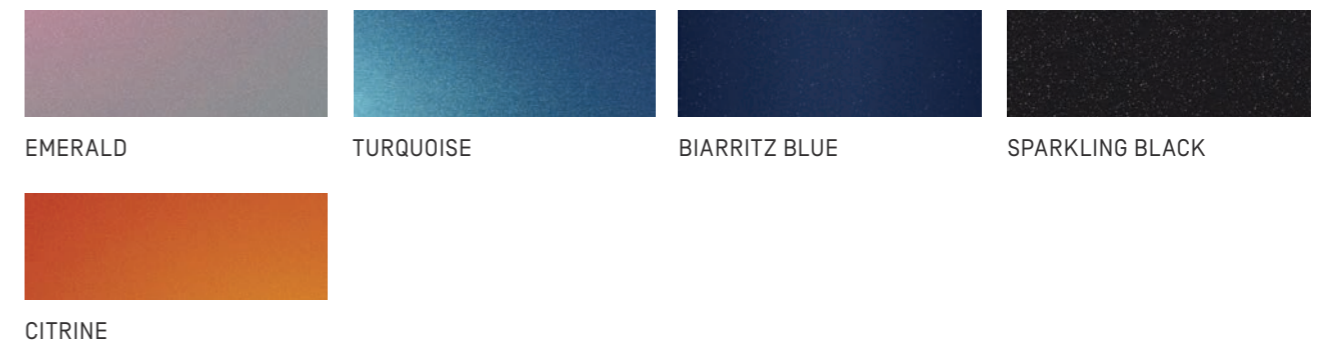
## METALLIC

The MondoClad® Metallic range makes a distinctive design statement on any skyline, creating a striking visual mix of gleaming facades and shadows.



## SPECIALTY

Our MondoClad® Specialty colour range offers architects the ability to create a unique design that will capture the audience and leave a memorable impression.



## NATURAL

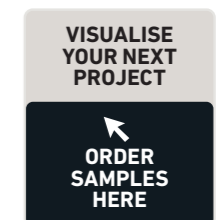
The unique MondoClad® Natural option offers a stunning finish – appearance of a natural texture up-close, and its smooth finish from afar.

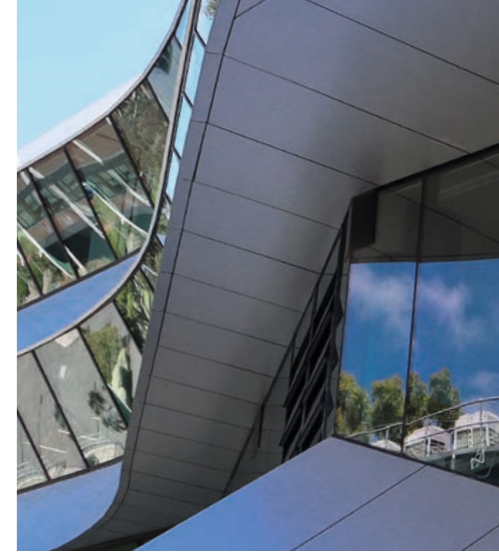


Colours displayed on this colour card are a guide only and have been matched as close as possible to production standards under daylight conditions. Due to the nature of the printing process some degree of colour and gloss level variation may occur. Where more than one finish is available product colour may vary. We recommend that you use production line prepared samples for final colour selection or approval.

## CUSTOM

Custom colours are available upon request with a minimum order quantity.





## FABRICATION

### MondoClad® sheets can be fabricated into panels using various techniques.

*It is strongly recommended that you consult with machinery manufacturers and tool suppliers to secure the best fabrication result. We suggest that you conduct preliminary tests and trials prior to commencing the production of panels.*



#### CNC Router

A V-groove with a flat base of 3mm is recommended to a maximum depth of 2.2mm. Spindle rotation speeds and feed rates are machine dependant and should be discussed with machine manufacturers. A lubricant mister is recommended when fabricating MondoClad®. For optimum fabrication results, we recommend consulting machine manufacturers and tooling supply companies.



#### Folding

After the V-groove has been formed, fold the return leg back in one movement. It is recommended that a portable folding tool be used for small panels and a folding machine/bed for larger format panels. The initial folded angle should slightly more than the final angle required.



#### Bending

As an alternative to V-grooving and folding MondoClad® can be formed into cassettes using a press brake to create the 90° bend.



#### Circular Saw

For best results, a track guided circular saw is recommended. It is important to discuss blade selection with manufacturer. Hand folding is generally achievable without the need for bending equipment. A depth gauge roller suitable for 3mm thickness may be required.



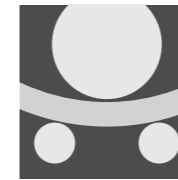
#### Vertical Panel Saw

This type of saw can cut and route MondoClad®. Please seek manufacturer's advise in the selection of an appropriate blade. Existing vertical saws can be retro fitted with a variable speed driver controller and lubricant misting equipment. When creating a V-groove for folding, the minimum thickness left in the bottom of the groove should be 0.7mm



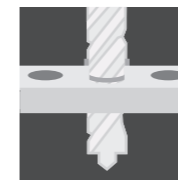
#### Shearing

MondoClad® can be guillotined to the required size. Ensure the cut material is captured to prevent damage.



#### Roll Bending

To create curved surfaces, use a suitable bending machine. Safeguard the material by maintaining the protective film. Make certain the rollers are clean and dent-free. The minimum bending radius should be no more than 15 times the thickness.



#### Drilling

A high quality HSS centre point drill bit is suitable for drilling MondoClad®.



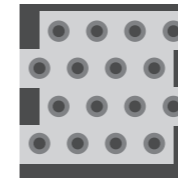
#### Fixing

You can rivet MondoClad® using blind and solid rivets. Always consider the effects of thermal expansion and potential building movement. Stainless steel screws should be used with all MondoClad® products. Always consider the effects of thermal expansion and the possibility of building movement.



#### Welding

The common methods for welding MondoClad® are TIG and MIG. It is recommended to consult with your local welding specialist for advice.

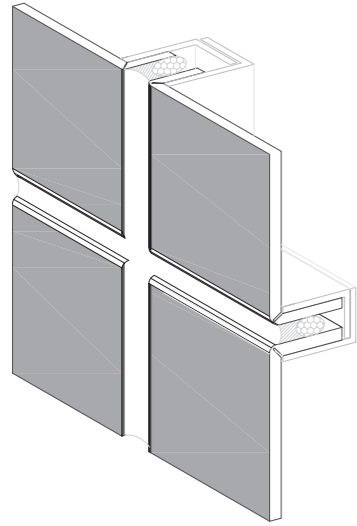


#### Perforating

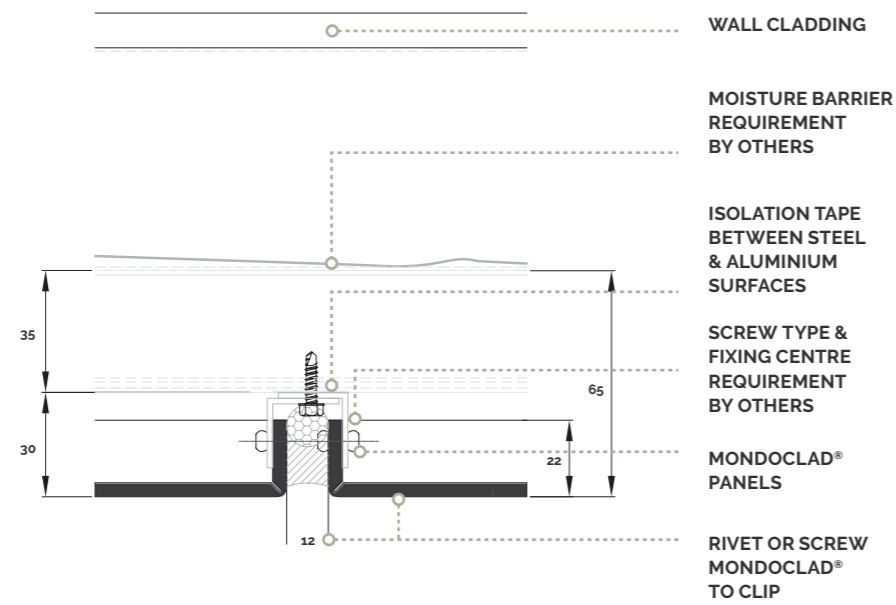
MondoClad® can be perforated by punching, drilling or milling. Contact HVG Facades to discuss the pattern and open area you are seeking to achieve.

# FIXING DETAILS

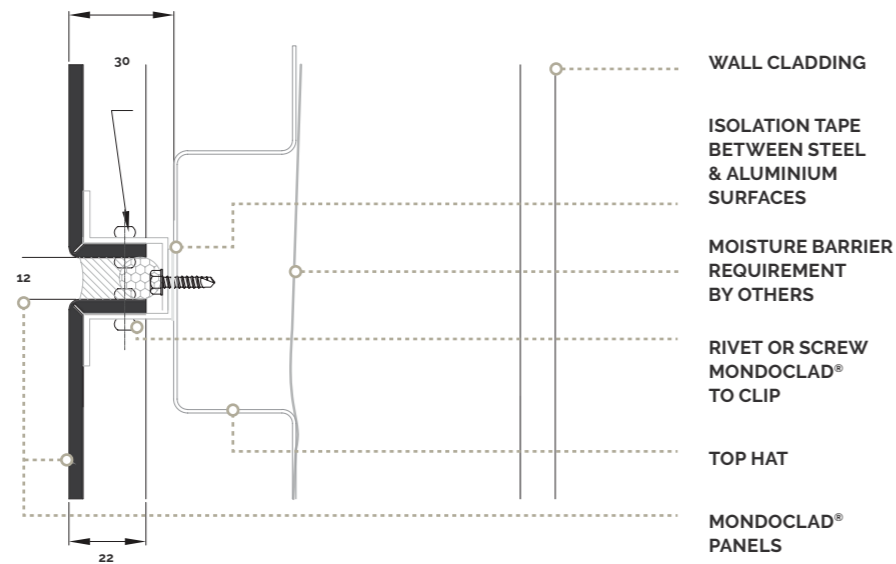
MondoClad®  
Fixed Cassette System



## Vertical Joint-Route



## Horizontal Joint Z Angle-Route



# CLEANING INFORMATION

To maintain the appearance of the MondoClad® panels we strongly recommend regular cleaning with appropriate mild detergents ensuring that the detergent is thoroughly rinsed off the facade.

Never use cleaning products that are highly alkaline or acidic and avoid abrasive materials and paint dissolving solvents. Facades that are located near a marine or industrial environment may need more frequent cleaning periods.

The surface should be cleaned either manually using a soft brush or by means of a high-pressure cleaner (max. 50 bar) with clean water. If necessary, a mild cleaning agent (pH6-7) may

be added, up to a maximum of 10%. Cleaning should take place from top to bottom and should be continuously rinsed with clean water to remove any cleaning agent residue. Generally, we recommend trying out the cleaning agent on an unobtrusive part of the building to check whether the surface appearance is affected. Do not clean surfaces in direct sunlight or if the temperature is above 40°C. The quick drying may cause marks or stains.



# TECHNICAL DATA SHEET

Properties	Units	Values
Alloy		5052
Standard thickness	mm	3
Painted weight	kg/m <sup>2</sup>	8.31
Raw density	kg/m <sup>3</sup>	2680
Indicative minimum radius	mm	4.5
Tensile strength	MPa	215-265
0.2% Proof stress	MPa	>160
Elongation	%	7
Linear thermal expansion		2.4mm/m at 100° temperature difference
Melting range	°C	607-650
Modulus of elasticity - Tension	GPa	69.3 @ 20°C
Modulus of elasticity - Torsion	GPa	25.9 @ 20°C
Modulus of elasticity - Compression	GPa	70.7 @ 20°C
Thermal conductivity	W/m.k	138 @ 25°C
Electrical resistivity	micro-ohm.m	70.7 @ 20°C
Electrical conductivity - Equal volume	MS/m	20 @ 20°C
Electrical conductivity - Equal weight	MS/m	67 @ 20°C
Sound adsorbtion factor	NCR	0.05
Sound reflection	%	95

## FIRE PERFORMANCE

MondoClad® solid aluminium panels are non-combustible when tested to AS1530.1.

Test standard	Result		
AS1530.1	Non-combustible		
AS1530.3	Pass	Ignitability index	0
	Pass	Heat evolved	0
	Pass	Spread of flame	0
	Pass	Smoke developed	1
AS5637.1	Pass	Group	1



## SUSTAINABLE MANAGEMENT AND RECYCLING PROGRAM TARGETING ZERO CARBON FOOTPRINT

**HVG Facades is proud to be a leading supplier of recladding materials to the Australian construction industry.**

In response to the mandated removal of all non-compliant polyethylene (PE) cladding, it is estimated that the amount of waste generated by the removal of this cladding will exceed 20,000 tonnes.

HVG Facades is committed to reducing the impact this waste will have on our environment and as a result we have partnered with approved recycling experts to develop EnviroSmart®.

EnviroSmart® is a program that seeks to address a significant need in the construction industry, in a sustainable manner that contributes to the future health of our planet. This program is an end-to-end solution that provides a cost

effective and safe way to remove and recycle aluminium composite panels. As a completely transparent solution, EnviroSmart® can provide certified documentation of the entire process.

### Making recladding even greener

Now, in addition to recycling and reusing non-compliant aluminium cladding, we've gone one significant step further and teamed up with Carbon Positive Australia to plant trees and help restore the Australian landscape.

For every qualified project, where non-compliant cladding is removed and recycled using the EnviroSmart® program, HVG Facades will donate and plant trees on your behalf with Carbon Positive Australia.



A registered Australian charity working to combat climate change and restore habitats, Carbon Positive Australia plants native trees and shrubs on unused and degraded land to restore the natural habitat. Over their 20-year history, they've restored almost 5,000 hectares of land across Australia.







# MondoClad®

HIGH QUALITY MARINE GRADE ALUMINIUM | PVDF FINISH | EASY TO FABRICATE

Stocked in Australia in a range of colours, shades and sizes. MondoClad® panels offer high colour retention and do not oxidise over time. Custom sizes can also be provided upon request.



TESTED TO AS1530.1  
NON COMBUSTIBLE

**20**YEAR  
warranty



100% RECYCLABLE

By **HVG** façades

[hvgfacades.com.au](http://hvgfacades.com.au) | 1300 881 712

#### SYDNEY

29 Henderson Street  
Turrella NSW 2205

#### MELBOURNE

25 West Park Drive  
Derrimut VIC 3026

#### BRISBANE

128 Mica Street  
Carole Park QLD 4300

#### PERTH

72 Bushland Ridge  
Bibra Lake WA 6163

#### ADELAIDE

57 Barnes Avenue  
Marleston SA 5033