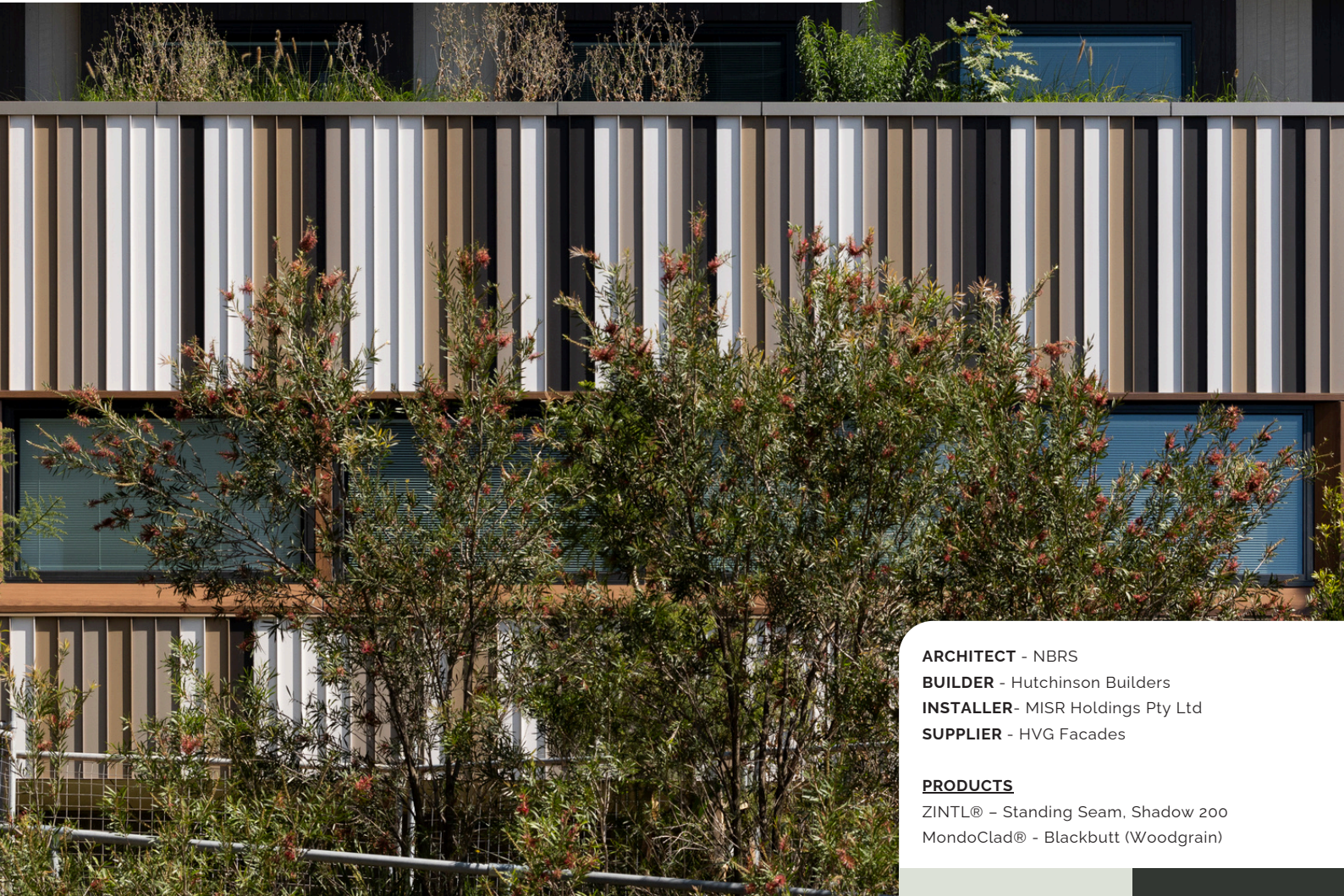




CASE STUDY

BLACKTOWN MENTAL HEALTH RECOVERY CENTRE

BLACKTOWN | NSW



ARCHITECT - NBRS

BUILDER - Hutchinson Builders

INSTALLER - MISR Holdings Pty Ltd

SUPPLIER - HVG Facades

PRODUCTS

ZINTL® - Standing Seam, Shadow 200

MondoClad® - Blackbutt (Woodgrain)

CASE STUDY

BACKGROUND

Located within the Blacktown Hospital precinct in Western Sydney, the Blacktown Mental Health Recovery Centre is a key project in the NSW Government's Statewide Mental Health Infrastructure Program (SWMHIP). Designed by NBRS, the facility replaces the former Bunya Unit at Cumberland Hospital, offering 44 medium- and low-secure forensic beds.

The architectural vision was to create a safe, recovery-focused space that broke away from traditional institutional models. Prioritising a therapeutic environment, the building was designed to foster dignity and comfort, integrated with surrounding hospital services while maintaining its own clear identity.

Drawing inspiration from the Australian landscape, the design uses colour and texture to establish a residential tone that connects patients to nature and community. The aim was to redefine what secure mental health care looks like—warm, respectful and human in scale



CHALLENGE

Creating a facility that balances the demands of security with the sensitivities of mental health recovery presented a unique design challenge. While the architectural intent was to produce a calm, welcoming and residential aesthetic, the building still needed to perform to the highest standards of safety, durability and compliance. NBRS sought to deliver a façade that could deliver both softness and strength—creating a visual identity that integrated seamlessly with the natural surroundings, while meeting the robust specifications of a healthcare facility.

Every material selected had to achieve more than just visual appeal. In a high-security and high-traffic environment, finishes had to resist tampering, offer long-term weather performance, and meet strict non-combustibility standards. Achieving this in a way that retained architectural integrity and therapeutic visual quality was a critical part of the design brief. The façade would play a central role in defining the tone of the facility—both for those who live and work inside it, and for how the building presents itself to the public.



hvgfaçades.com.au

 **MondoClad.**

ZINTL.

SOLUTION

To bring the vision to life, HVG Facades supplied a combination of ZINTL®, a high-performance interlocking aluminium cladding system known for its sleek aesthetic and durability, and MondoClad®, a premium solid aluminium panel solution offering exceptional fire resistance and a clean, modern finish. Together, these products provided the desired architectural expression while ensuring superior performance and safety.

ZINTL® Standing Seam in a palette of Linen, Champagne Shimmer, Golden Touch Pearl and Dark Bronze brought warmth and tonal variation to the primary façades, reflecting local flora and creating visual softness across the building envelope. To introduce subtle contrast and architectural definition, ZINTL® Shadow 200 in Monument was used across select areas. The system's interlocking profile ensured precise alignment and consistent shadow lines, while enhancing the building's modern, streamlined look.

MondoClad® in Blackbutt woodgrain finish was used around window reveals and accent zones, reinforcing the residential feel with a natural, tactile quality. Its robust PVDF coating delivered the look of timber without sacrificing fire compliance or longevity.

All materials were fully compliant with AS1530.1 non-combustibility standards and chosen for their proven performance in high-traffic environments. The combination of architectural intent and material integrity resulted in a facility that is secure and compliant, yet human-focused and restorative in presence.

